

# LINE GLASS

20.04.2026\_rev.01



# KE



# LINE GLASS

# KE



↔ 1000 ↻ 300



↔ 120 ↻ 120

Frameless sliding glass doors (VEPA) with floor guide only height 18 cm.

Max dimensions 1000x300.

The doors can be slid to the left or the right and the direction can quickly be changed, even during the installation phase.

The system is modular to make cleaning easier.

Side or central closure.

Bi-fold system with aligned glass doors.

The height of each door can be adjusted by up to 8 mm.

It is not guaranteed to be 100% waterproof in the event of heavy rain or high winds and rain.

Wide range of colors including RAL 9010 white, RAL 9010 mat white, RAL 7016 Iron, Carbon rough and Corten rough.

Accessories such as handle, sash bottom caps, etc. will match these five colors, while for all others they will be in ral silver anodized color.

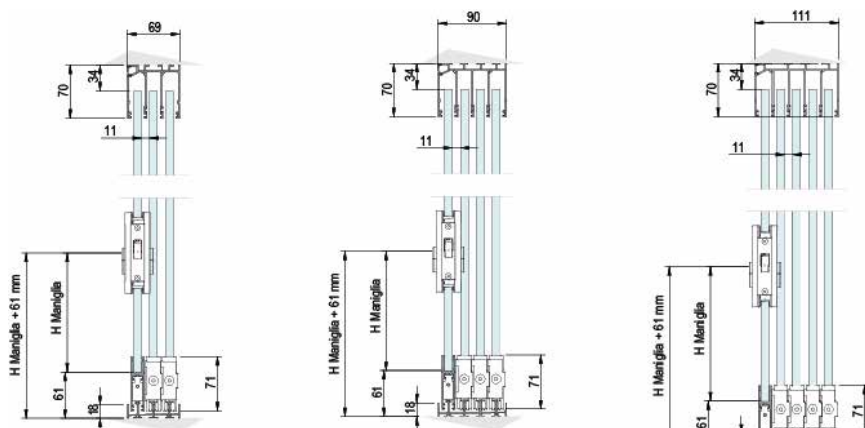
In addition to clear glass (standard), there is the option of extra-clear, etched, smoked, reflective or Float 55.4 glass (the latter only on Line Glass 12).

The installation of Line Glass 12 with Float 55.4 glass is only permitted on the ground floor.

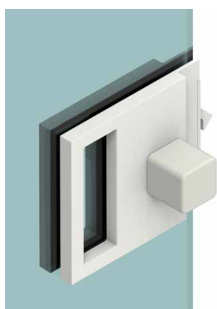
CE marking according to EN 14531/1:2016.

# TECHNICAL INFORMATION

## General technical plan



## Closure with standard handle

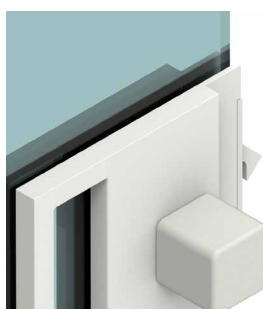


Single knob/  
Interior+Exterior knob

## Locking Optional



Key/Key



Key/Handle

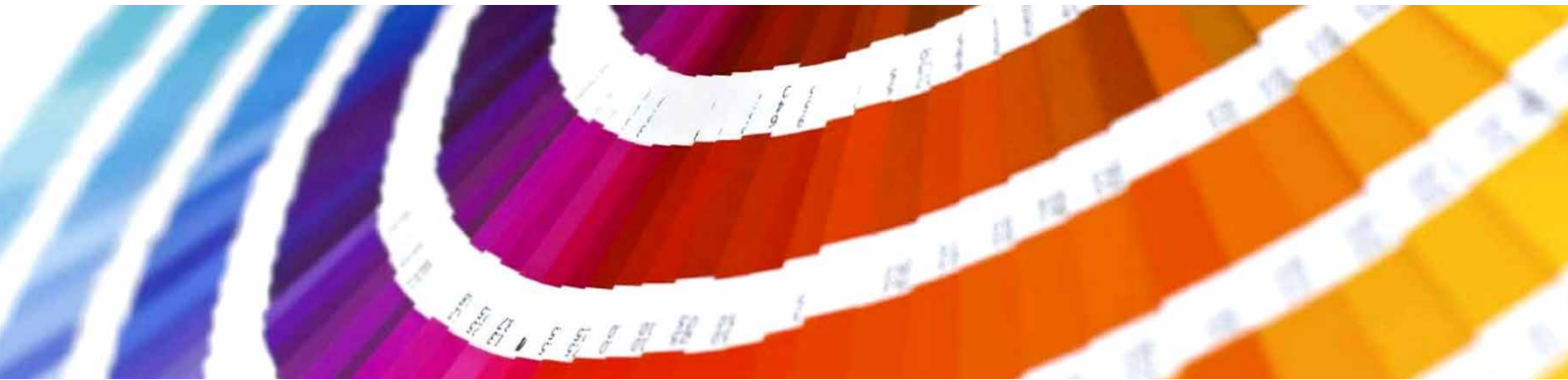
## TECHNICAL INFORMATION

---

### Panel gasket with brush

---





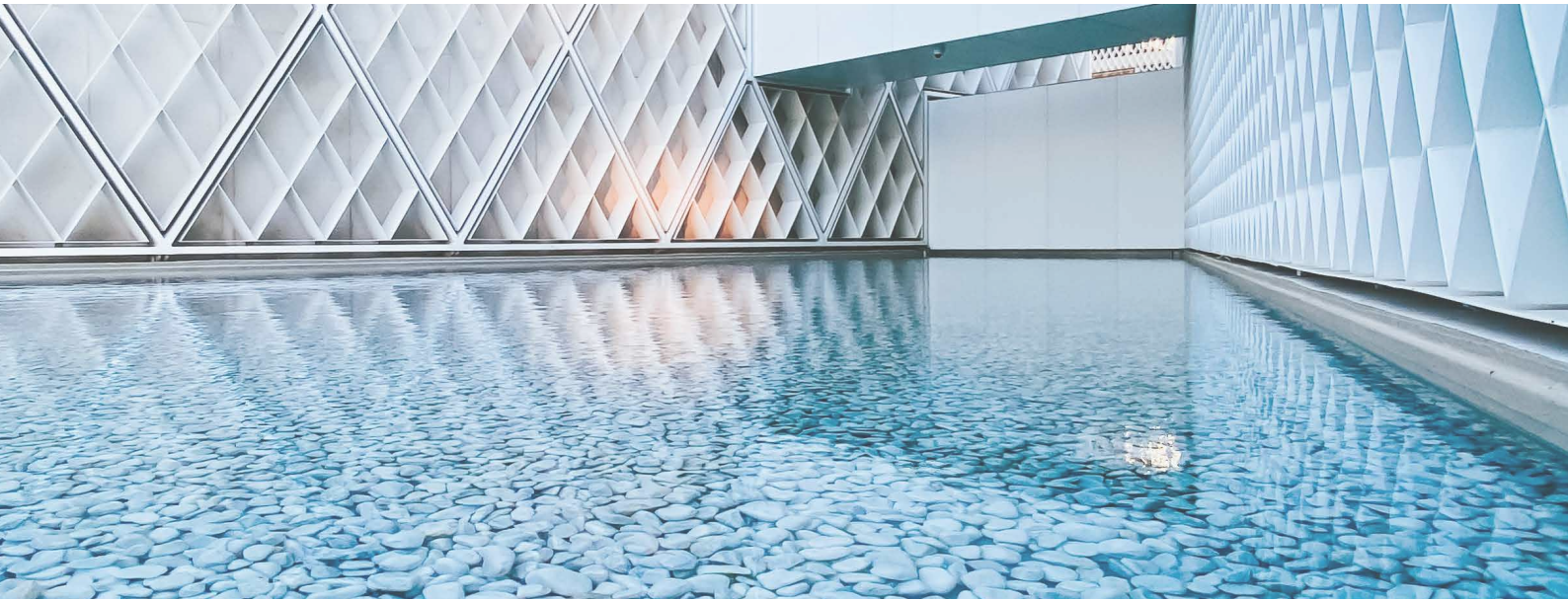
The KE painting process includes high quality standards, with an 8-stage pre-treatment that includes degreasing, deoxidation, and protective treatments before painting. Thanks to this last phase, components and profiles are further guaranteed against particularly severe environmental situations. At the end of the process the profiles and components are painted with polyester resin-based epoxy powders. Treated components are periodically tested in salt spray according to the ISO 9227 standard to confirm conformity and consistency of the process. The European product standard EN 13561: 2015 defines corrosion resistance classes of the metal parts that make up the product according to the table below. Tests performed on the painted components and profiles allow us to classify the product in the maximum class achievable according to EN 13561: 2015, C2 / 4 (48 h - internal components, 240 h - external components).

Equipped with the most modern process control systems including continuous monitoring in which the working parameters are recorded and corrected every 2 minutes, the new painting process guarantees the high quality characteristics of the product while minimizing the risk of environmental pollution. This is a choice born from the desire to always keep up with technology while guaranteeing operator safety and low environmental impact. Thanks to nanotechnologies, the implemented coating constitutes an excellent base for anchoring paints, ensuring excellent adhesion and resisting corrosion. The plant in which aluminum or galvanized steel products with a length of up to 7 meters can be treated, includes 7 treatment tanks, 1 double compartment drying oven, 1 polymerization oven and 1 purification plant for waste water treatment. The real focus of the plant, however, is the two powder coating booths, each with 4 stations for manual retouching. The booths allow greater production continuity, thanks to a drastic reduction in required stops for color changes.

### CORROSION RESISTANCE

Classes	1	2	3	4
Internal components	24	48		
External components		48	96	240

# COLOURS



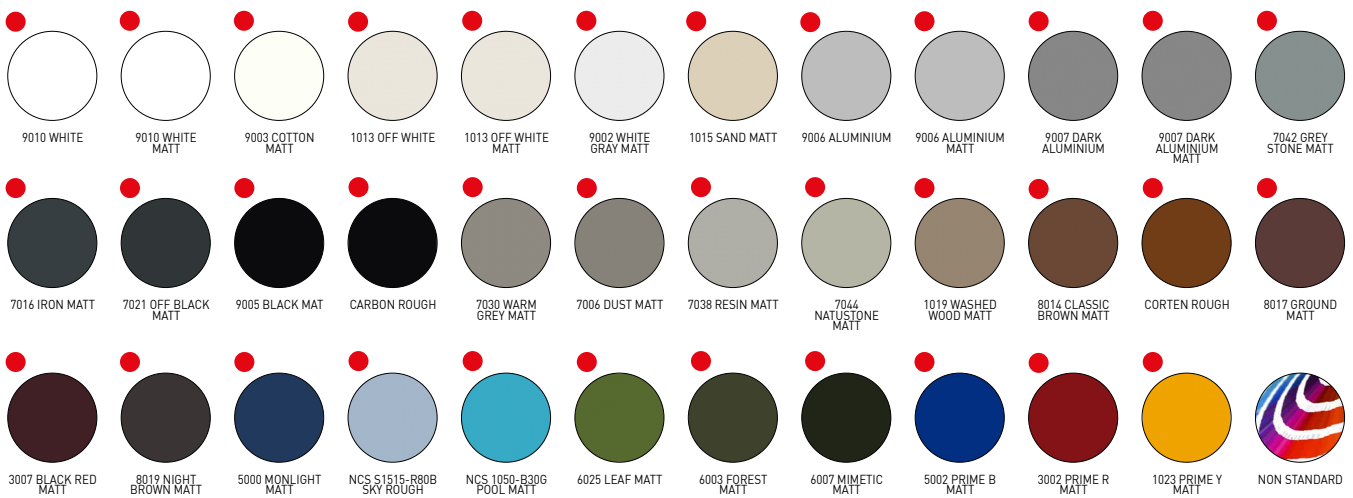
When working with color, we know that our whole world is defined by light. And color is nothing more than a breakdown of light. Objects reflect back to our eyes only the color that defines it. This is why it is so important to recognize the close link between color and matter. For this project, there are three keywords that guide the research: Words, Places, Matters.

**WORDS:** Naming colors is important to make them familiar and easily recognizable.

**PLACES:** Places define colors. Recognizing different types of places is a starting point for defining and suggesting color combinations.

**MATERIALS:** Objects do not exist in isolation, but rather match the environment around them: analyzing the materials that make up the environment itself helps us to make decisions; to decide, for example, if the character of a place is false or if instead it is genuinely artistic.

## COLOURS RAL



● Ral standard (without supplement)

## COLOURS

STRUCTURE COLORS	PLASTIC COLORS
RAL 9010 WHITE MATT	White
RAL 9010 WHITE	White
RAL 1013 OFF WHITE MATT	Ivory
RAL 1013 OFF WHITE	Ivory
RAL 9006 ALUMINIUM MATT	Black/Gray
RAL 9006 ALUMINIUM	Black/Gray
RAL 9007 DARK ALUMINIUM MATT	Nero
RAL 9007 DARK ALUMINIUM	Black/Gray
RAL 8014 CLASSIC BROWN MATT	Black
CORTEN ROUGH	Black
RAL 7016 IRON MATT	Black
CARBON ROUGH	Black
RAL 9005 BLACK MATT	Black
RAL 9003 COTTON MATT	White
RAL 9002 WHITE GRAY MATT	White
RAL 7038 RESIN MATT	Black/Gray
RAL 7044 NATURAL STONE MATT	Black/Gray
RAL 7030 WARM GREY MATT	Black/Gray
RAL 7042 GREY STONE MATT	Black/Gray
RAL 1015 SAND MATT	Ivory
RAL 1019 WASHED WOOD MATT	Black
RAL 7006 DUST MATT	Black
RAL 3007 BLACK RED MATT	Black
RAL 8017 GROUND MATT	Black
RAL 8019 BIGHT BROWN MATT	Black
RAL 7021 OFF BLACK MATT	Black
RAL 5000 MONLIGHT MATT	Black
NCS S1515-R80B SKY ROUGH	Black
NCS 1050-B30G POOL MATT	Black
RAL 6025 LEAF MATT	Black
RAL 6003 WOOD MATT	Black
RAL 6007 MIMETIC MATT	Black
RAL 5002 PRIME B MATT	Black
RAL 3002 PRIME R MATT	Black
RAL 1023 PRIME Y MATT	Ivory

N.B. For colors not listed, KE reserves the right to select the best possible color combination between the frame and the available plastic components.



## GLASS CERTIFICATIONS

### Transparent (standard)

Light characteristics - EN 410  
Light transmission: tv (%) 88  
External light reflection: pv (%) 8

Energy characteristics - EN 410  
Sun factor: g (%) 82  
Energy reflection: pe (%) 7

Thermal properties - EN 673  
Thermal transmittance: Ug (W/m<sup>2</sup>.K) 5.6  
(Optional HST glass treatment)

### Transparent Float 55.4 (only Line Glass 12)

Light characteristics - EN 410  
Light transmission: tv (%) 88  
External light reflection: pv (%) 8

Energy characteristics - EN 410  
Sun factor: g (%) 77  
Energy reflection: pe (%) 7

Thermal properties - EN 673  
Thermal transmittance: Ug (W/m<sup>2</sup>.K) 5.3



### Extra clear

Light characteristics - EN 410  
Light transmission: tv (%) 91  
External light reflection: pv (%) 8

Energy characteristics - EN 410  
Sun factor: g (%) 90  
Energy reflection: pe (%) 7

Thermal properties - EN 673  
Thermal transmittance: Ug (W/m<sup>2</sup>.K) 5.6  
(Optional HST glass treatment)



### Mirrored

Light characteristics - EN 410  
Light transmission: tv (%) 32,5  
External light reflection: pv (%) 23,4

Energy characteristics - EN 410  
Sun factor: g (%) 42,8  
Energy reflection: pe (%) 19,3

Thermal properties - EN 673  
Thermal transmittance: Ug (W/m<sup>2</sup>.K) 5.3  
(Optional HST glass treatment)



# CERTIFICATION



## GLASS CERTIFICATIONS

### Frosted

Light characteristics - EN 410  
 Light transmission: tv (%) 87  
 External light reflection: pv (%) 7

Energy characteristics - EN 410  
 Sun factor: g (%) 80  
 Energy reflection: pe (%) 6

Thermal properties - EN 673  
 Thermal transmittance: Ug (W/m<sup>2</sup>.K) 5.6  
 (Optional HST glass treatment)



### Fumé

Light characteristics - EN 410  
 Light transmission: tv (%) 26  
 External light reflection: pv (%) 5

Energy characteristics - EN 410  
 Sun factor: g (%) 43  
 Energy reflection: pe (%) 5

Thermal properties - EN 673  
 Thermal transmittance: Ug (W/m<sup>2</sup>.K) 5.6  
 (Optional HST glass treatment)



### Certification

Line Glass undergoes laboratory testing to ensure maximum strength and safety. Its quality is certified by Istituto Giordano S.p.A., a member of the group of EC notified bodies operating in the field of product certification and laboratory testing of materials. Line Glass is CE marked in accordance with EN 14351-1:2016.

Parametro	Valore	Classe
Trasmissione luminosa (L <sub>v</sub> )	87%	2
Riflettività esterna (R <sub>pv</sub> )	7%	3
Fattore solare (g)	80%	3
Riflettività energetica (R <sub>pe</sub> )	6%	3
Trasmissione termica (U <sub>g</sub> )	5.6 W/m <sup>2</sup> .K	3

Caratteristica	Spessore di prova	Numero di prova	Metodo di certificazione	Classe
Trasmissione luminosa (L <sub>v</sub> )	1000	1000	EN 12190-2	2
Riflettività esterna (R <sub>pv</sub> )	1000	1000	EN 12190-2	3
Fattore solare (g)	1000	1000	EN 12190-2	3
Riflettività energetica (R <sub>pe</sub> )	1000	1000	EN 12190-2	3
Trasmissione termica (U <sub>g</sub> )	1000	1000	EN 12190-2	3

**DICHIARAZIONE DI PRESTAZIONE**  
**00001-CPR-2020-11-02**

Ai sensi dell'Allegato III del Regolamento (UE) n.305/2011 del 9 marzo 2011  
 modificato dal Regolamento Delegato (UE) n.574/2014 del 21 febbraio 2014

Codice di identificazione unico del prodotto: LINE GLASS

Uso previsto del prodotto: Porta esterna pedonale

Nome e indirizzo del fabbricante: KE PROTEZIONI SOLARI S.r.l., Via Calnova 160/a, 30020 Noventa di Piave (VE) – Italia

Sistema di valutazione e verifica della costanza di prestazione: Sistema 3

Norma armonizzata: UNI EN 14351-1:2016 - *Finestre e porte - Norma di prodotto, caratteristiche prestazionali - Parte 1: Finestre e porte esterne pedonali*

Organismo notificato: Istituto Giordano S.p.A, laboratorio di prova notificato n. 0407

Dimensioni:

Denominazione	Tipo apertura	Larghezza massima L	Altezza massima H	Numero vetri N
LINE GLASS 5x3	Apertura singola	500 cm	300 cm	5
LINE GLASS 7x3	Apertura doppia	700 cm	300 cm	8

Prestazioni dichiarate:

Caratteristiche essenziali	Specifica tecnica armonizzata	Norma di prova
Resistenza al carico del vento: Classe 1	UNI EN 14351-1:2016	UNI EN 12211:2016

La fornitura dei prodotti sopra indicati è conforme all'insieme delle prestazioni dichiarate.  
 Si rilascia la presente dichiarazione di prestazione in conformità al regolamento (UE) n.305/2011 sotto la responsabilità esclusiva del fabbricante sopra indentificato.



EN 14351-1:2016

Noventa di Piave, 02 Novembre 2020

KE PROTEZIONI SOLARI S.r.l.

Simone Mazzon  
 Amministratore delegato



### **EN ISO 9001 \_ Quality**

KE has adopted a Quality Management System compliant with EN ISO 9001 requirements in order to maintain and increase quality and meet the highest customer expectations. This continuous improvement, through the control of all processes and careful evaluation of risks and opportunities, engages the entire organization in the development of systems to ensure the safety and reliability of the product and in the search for innovative solutions and technologies.

### **OHSAS 18001 \_ Safety**

KE has activated a Safety Management System as an integral part of its work organization, committing itself to organizing the entire structure in order to pursue the objectives of continuous improvement in terms of safety and health protection. Training, knowledge and compliance with current legislation on health and safety at work, cooperation and collaboration and preventive activities are actively pursued in order to minimize the possibility of non-compliance.

### **EN ISO 14001 \_ Environment**

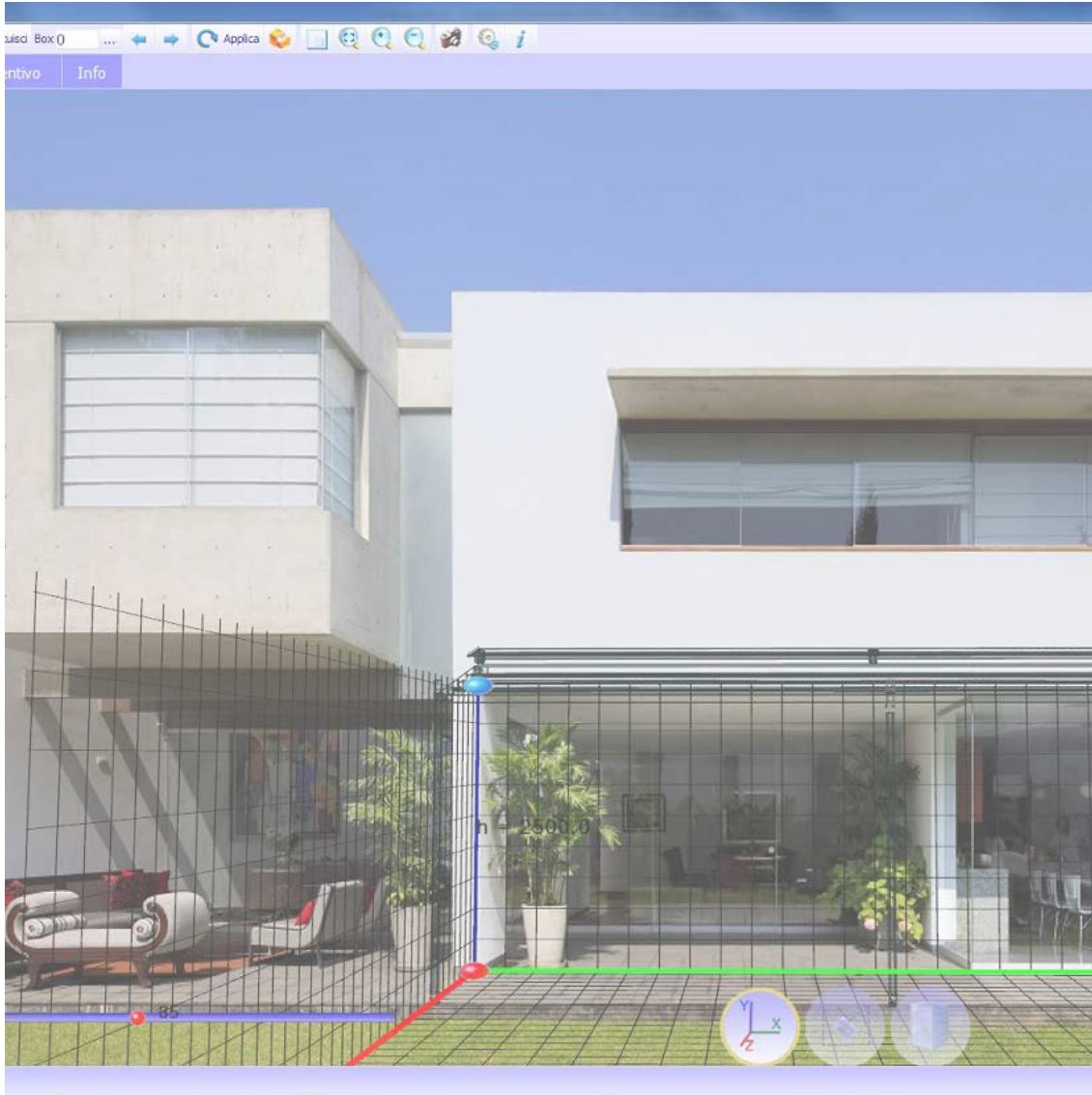
KE is ISO 14001 certified for environmental management and strives to be an example of respect for environmental resources and for the continuous improvement of its environmental management system. It is committed to continuous improvement and pollution prevention in compliance with applicable laws, regulations and standards; systematically detects any environmental impact of manufacturing processes, promotes the culture of recovery and recycling in the company and in the related production chain.

### **CE MARK \_ EN 13561**

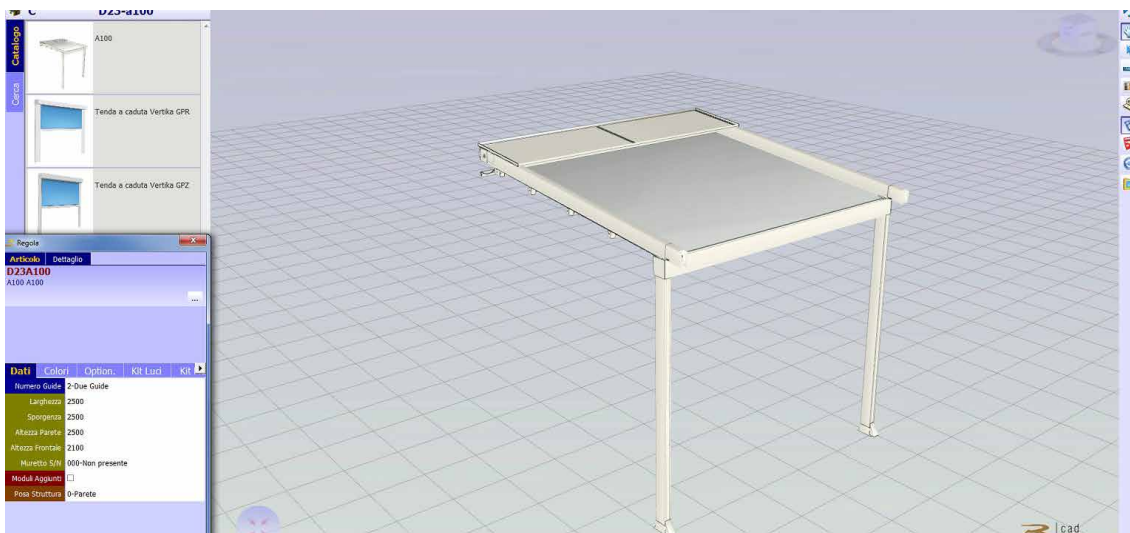
The CE marking of outdoor awnings is a signal to the Consumer that the product can be sold freely in the EU single market, as it complies with Community provisions which recognize safety as the priority of every product that has this agreed upon reference standard. Verification of wind resistance capacity and the clear indication of the ability of the awning to contribute to the energy savings of the building (Gtot), are some of the commitments that the manufacturer makes to a product that has earned the CE marking. The name of the manufacturer, the reference standard (in our case EN 13561) accompany a product that is properly adapted to European indications.

### **CE MARK \_ EN 1090-1**

KE extended the CE marking in 2015 to stationary awnings, which are among the aluminum structural components covered by the international standard EN 1090-1. This marking reflects our use of rigorous structural design and manufacturing with qualified processes, adequate industrial resources and qualified personnel.



The KE B2B order system is a simple and intuitive service for placing orders conveniently online. An attractive graphic design, numerous functionalities and an easy and intuitive use mode that allows to access in real time to all the information related to the history of the orders and to the processing of the current ones. With the Cad Lite 3D Configurator you can configure Genius and Bioclimatica models thanks to a constantly updated online catalogue. Thanks to an easy-to-use interface, it also allows you to formulate a complete quote with minimal error.





Home > Ambienti

## Ambienti

La nostra missione è creare nuovi spazi outdoor da vivere in totale armonia. Grazie alle nostre **coperture solari e alle strutture per esterni personalizzate, potrai arredare con stile il tuo terrazzo, giardino, attico, ma anche modulare...** [Leggi di più](#)



BIM technology improves the working method of designers and is now the main source of information for the realisation of a project. With BIM the model is generated in a "parametric 3D" from which a series of information such as 2D views, elevations, sections but also metric calculations and much more can be automatically derived. On the KE website you can find the BIM gallery of the main KE models, the certifications and all the useful technical documentation for each product: [www.keoutdoordesign.com](http://www.keoutdoordesign.com)

Area Clienti IT-IT

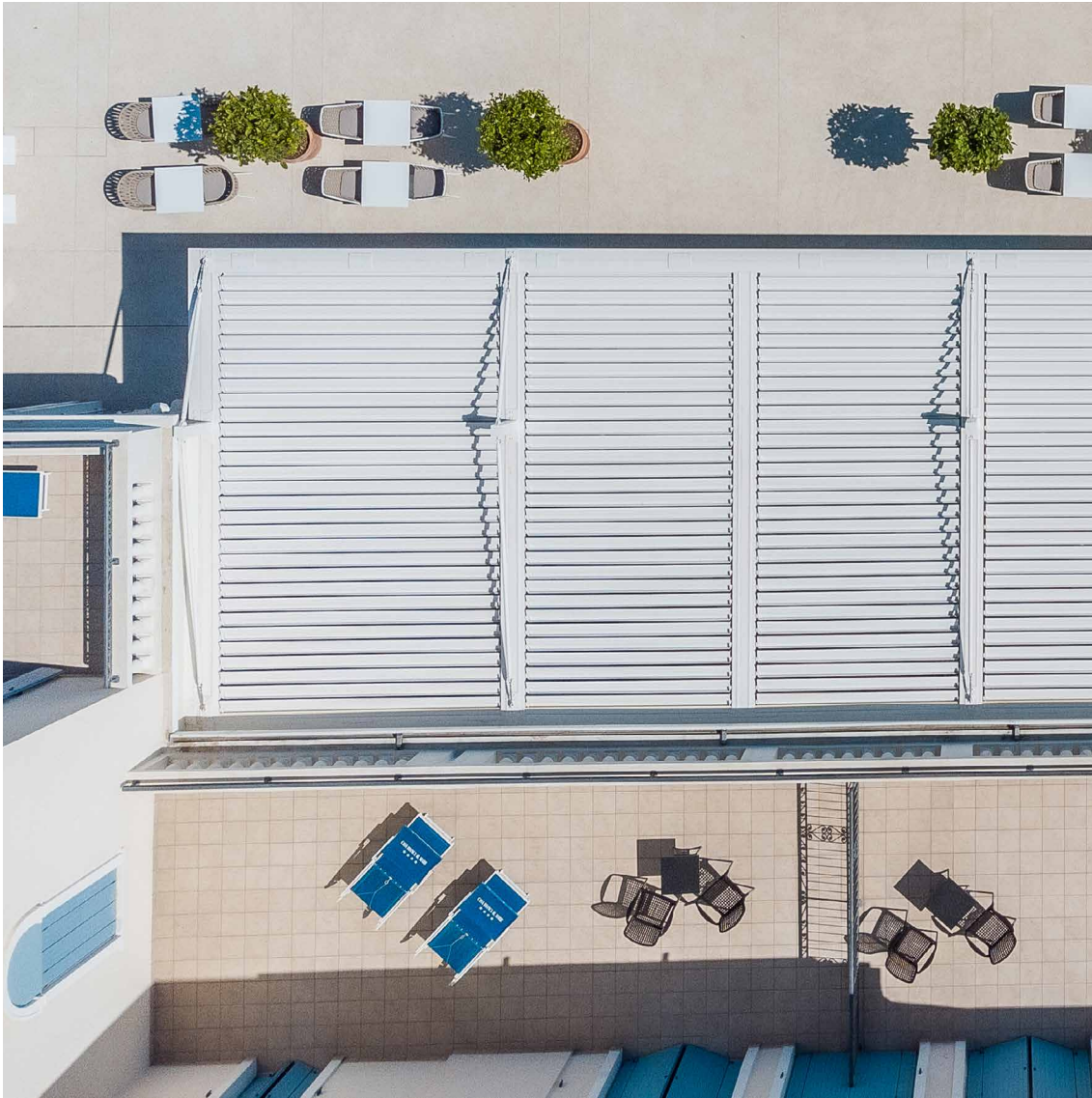
Referenze Area Media

Brochure e Cataloghi  
BIM & 3D Models  
Blog  
News  
Video

POWERED BY SYNCRONIA

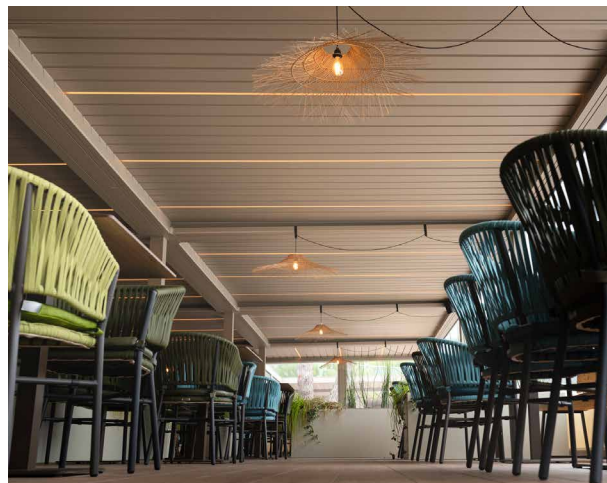
KE SCREENY 85 - SINGLE UNIT VERSION	KE SCREENY BOX	KE SPACE	KE VENEZIA GOLD	Kedry Skyllife	KE SCREENY 85 - SINGLE UNIT VERSION





**A GROUP,  
A VISION,  
A GROUP IN EVOLUTION**

Since 1987, KE has been designing and manufacturing arm awnings, cassette awnings, drop awnings, canopies, shelters and is specialised in shading structures that enhance the liveability of outdoor spaces, up to the redesign and restyling of urban furniture. Both for the variety of the range and the depth of the configurations, KE is a manufacturing reality able to satisfy the most demanding requests the most demanding requirements of designers, architects, window and door manufacturers, upholsterers and outdoor professionals.



**Improving the experience**

With KE's professionalism and experience you can rely on quality products designed to enhance your customers' outdoor experience. With KE it will be easier to live the outdoor space in perfect harmony with the surrounding environment, widening the viewpoints and ensuring maximum comfort in all seasons.