

# KE Storm Rail

*superior quality*

*superior performance*

*New for 2022...*

## *Storm Rail*

Superior Design & Performance  
in an Exterior Screen  
Designed for Extreme Weather

“

*In the United States in 2020 there were 16  
disastrous climatic events linked to violent weather  
phenomena such as hurricanes and tropical storms.  
In response to this specific need, KE developed  
Screeny Storm.*

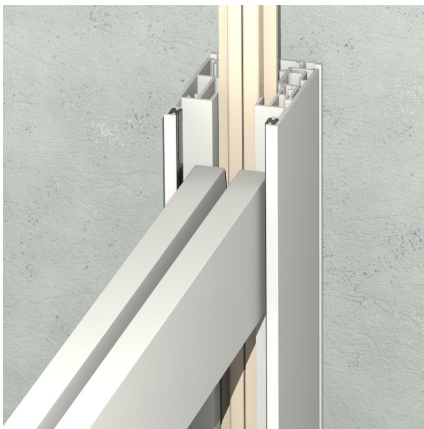
## KE Storm Rail is a New Fabric Guidance Option

This innovative design locks the Hem Bar and fabric into the Guide Rail. This keeps the edges of the screen secure under pressure from high winds and shock from impact.

Smooth movement of the Hem Bar is achieved with a polyethylene ZIP Rail Guide, placed vertically along the entire length of the guide. Fabric slides are held in place by stainless steel compensation springs.

The ZIP system contained in the guide provides a reliable seal against light and heat along the edges of the fabric. The telescopic end caps are not fixed to the profile, which reduces stress on the fabric in the corners.

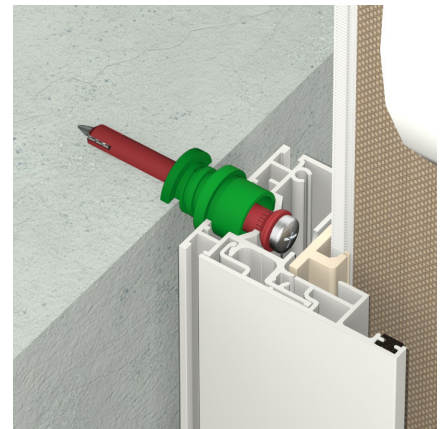
The addition of adjustable spacers makes installation of the guides simpler and more precise. Guides can be quickly and easily plumbed for perfect positioning.



**Hem bar is connectd to the Guide Rail**



**Compensation Springs**



**Adjustable Spacers**

# Durability Tested



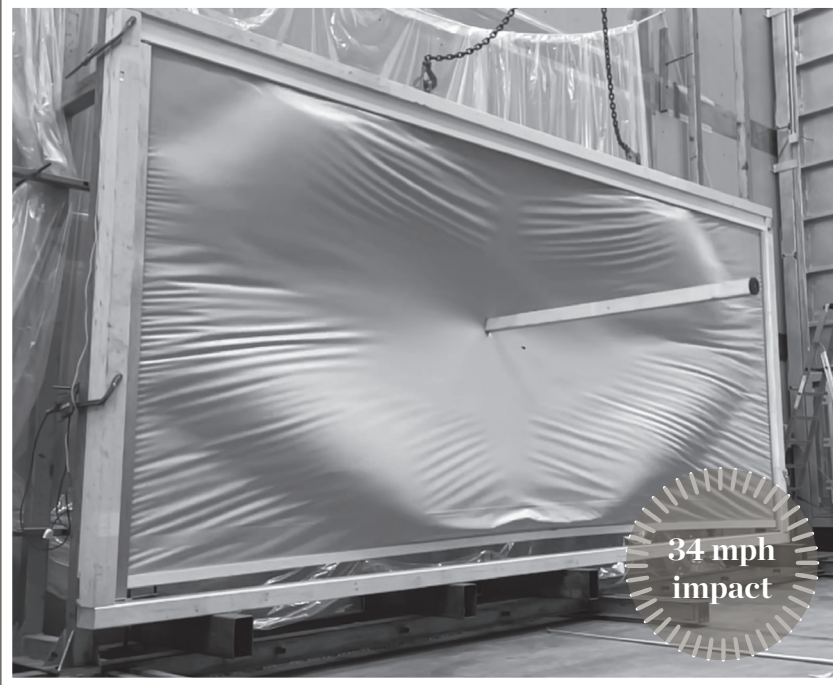
EN13561	Beaufort Scale	Wind Speed <i>mph</i>	Description
Class 1	4	13-18mph	Moderate Breeze
Class 2	5	19-24mph	Fresh Breeze
Class 3	6	25-31mph	Strong Breeze
Class 4	7	32-38mph	Near Gale
Class 5	8	39-46mph	Gale
Class 6	9	47-54mph	Strong Gale
Class 7	10	55-63mph	Storm
Class 8	11	64-72mph	Violent Storm
Class 9	12	73+mph	Hurricane

## Wind resistance

KE Storm was subjected to the wind resistance test, at the Security & Safety Laboratory of Istituto Giordano, accredited by ACCREDIA.

The tests were carried out both according to the European test method UNI EN 1932: 2013 (classification UNI EN 13561: 2015), and according to the American standard ASTM E330 / E330M-14 (coinciding with TAS 202, operating procedure of the Florida Building Code ).

KE Storm withstood a test pressure of 720 Pascals (78mph wind speed), far exceeding the maximum limit defined by the European standard of 480 Pa (Class 6).



## Impact Resistance

KE Storm was subjected to an impact test (LARGE PROJECTILE) according to TAS 201.

The goal was to test the screen's resistance against debris thrown in a hurricane. KE Storm was subjected to impacts with a solid object fired at 34 mph (15.2 m / s).



# KE Exterior Screens



KE offers a wide range of exceptional quality exterior screens that are a practical and functional solution for any home or office. They not only provide privacy and shade, but also control up to 99% of the sun's harmful UV rays that can cause skin damage, eye fatigue and prematurely fade furnishings, carpeting and window displays.

Choose from motorized or manual operation. A wide variety of colors and styles is available to find the perfect fit for any decor or functional requirement.

## Sizes Available

CS4 (4" Cassette): Width 3' – 13', Drop: 3' – 10'  
CS5 (5" Cassette): Width 3' – 20', Drop: 3' – 16'

CS6 (6" Cassette): Width 6' – 26', Drop: 3' – 16'  
CS0 (Open Roller): Width 3' – 26', Drop: 3' – 16'

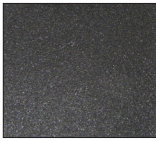




# Standard Frame Colors



WHITE



CHARCOAL



BROWN



SAND



Shown with clear vinyl window

## CS4, CS5, CS6 Exterior Cassette Screens

**Extruded powder coated aluminum cassette with stainless steel fittings.**

**Motorized operation with Somfy RTS, Somfy Maestria, or Moon RTS.**

**Mounts to wall or soffit. Manual gear drive available.**

**Popular Fabric Selections:**

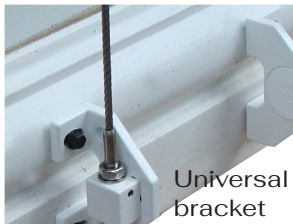
**Screen Mesh, Textilene, Phifer, Mermet, Ferrari, Awntex (horizontal seam placement when necessary)**

**Solid Fabric Material: Sunbrella Acrylic (vertical seam placement), or blackout fabric**

**Clear vinyl integration (limited operating temperature range)**

## Fabric Guidance Options

Cable: Attaches to bracket or cassette, guided through hem bar with optional zip retainer at bottom.



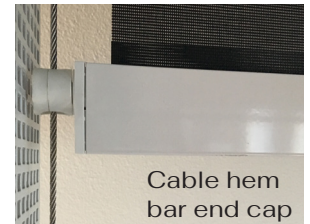
Universal  
bracket



Wall



Floor



Cable hem  
bar end cap

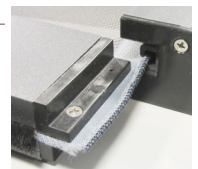


**Standard Track Rail:**

U-shaped track, bottom hem bar and optional zip retainer designed to along track opening.

**Zip Track Rails:**

Fabric with welded edge zipper and bottom hem bar that rides in a U-shaped track.

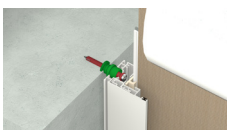


**Recessed Zip Track:**

Inner and outer tracks are recessed into wall or column and hidden from view.

**Rod:**

Stainless solid rod attaches to bracket or cassette guided through bottom hem bar.



**Storm Rail:** Keeps edges of the screen secure under pressure from high wind and impact..

**Free Hanging:** External hem bar or concealed weight in fabric pocket. without cable, track rail, or rod.





KE USA, Inc.

Headquarters & East Coast Operations  
445 Bellvale Road  
Chester, NY 10918  
888-387-2765  
845-610-1100

West Coast Operations  
California Division  
22220 Opportunity Way, Suite 104  
Riverside, CA 92518  
844-387-2765

Commercial Division  
38 Pond Lane, Suite B  
Middlebury, VT 05753  
802-388-7309