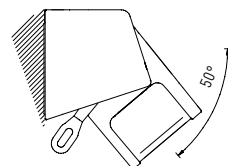
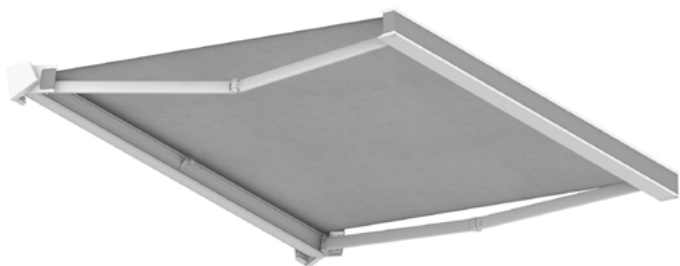
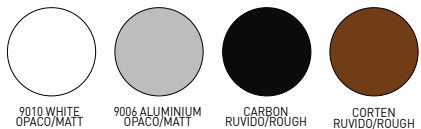


# QUBICA LIGHT B51

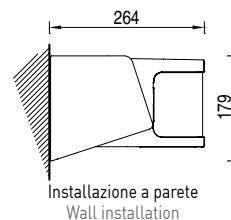
600	360	1
		2



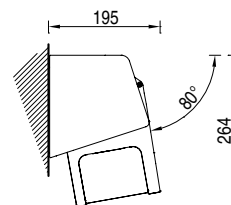
**RAL STANDARD**



Arganello - Winch - Treuil - Getriebe

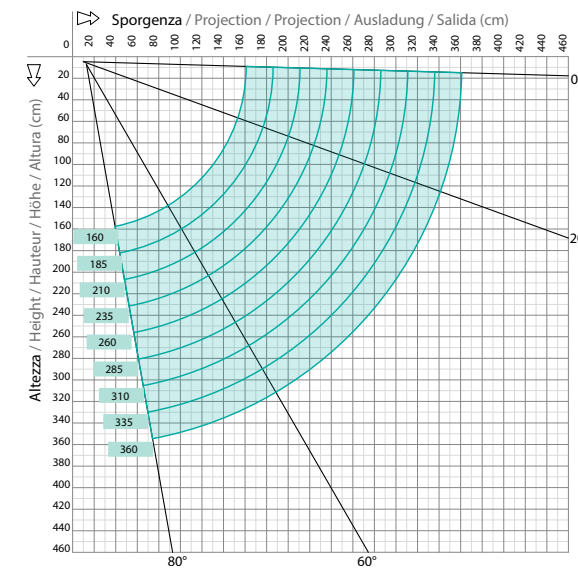


Installazione a parete  
Wall installation

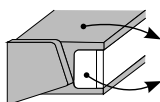


Installazione a parete 80°  
Wall installation 80°

Diagramma di copertura a parete - Wall covering diagram



**COMBINAZIONI COLORE / COMBINATIONS / COMBINAISON / VARIANTEN**



C1	C2	C3	C4	C5	C6	C7	C8	C9	C10	C11	C12	C13	C14	C15	C16
9010	9010	9010	9010	9006	9006	9006	9006	CARBON	CARBON	CARBON	CARBON	CORTEN	CORTEN	CORTEN	CORTEN
9010	9006	CARBON	CORTEN	9006	9010	CARBON	CORTEN	CARBON	9010	9006	CORTEN	CORTEN	9010	9006	CARBON

Ingombri minimi della tenda finita - 1 coppia bracci  
Minimum awning encumbrances - 1 pair arms  
Encombrentes minimum du store fini - 1 pair bras  
Minimaler Ausmaß der fertigen Markise - 1 Paar Arme

cm	
	2 BRACCI
160	196
185	221
210	246
235	271
260	296
310	346
360	396

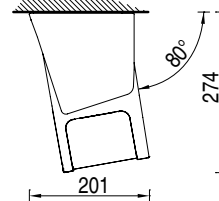
**Tessuto saldato di serie (eccetto Liberty, Panama, Resinati)**  
Fabric welded as standard (except Liberty, Panama, waterproof fabrics)  
Toile soudée (sauf Liberty, Panama, Imperméables)  
Stoff serienmäßig geschweißt (außer Liberty, Panama, wasserdichte Stoffe)

per aumenti TESSUTO e RAL vedi pagine 114/125  
For fabric and RAL increases see at pages 114/125  
Augmentation TISSU et RAL voir pages 114/125  
Für Aufpreise für RAL und Stoffe S. seiten 114/125

**CONSIGLIATO SUGGESTED**



Installazione a soffitto  
Ceiling installation



Installazione a soffitto 80°  
Ceiling installation 80°

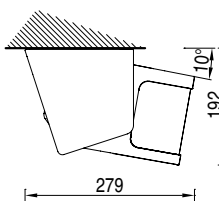
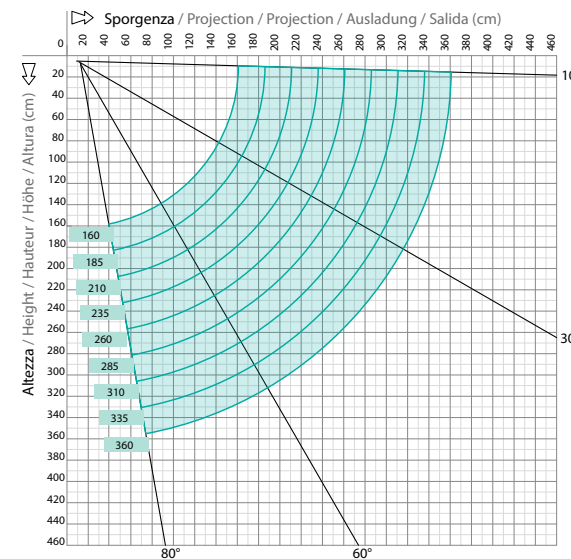
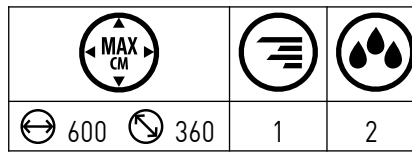


Diagramma di copertura a soffitto - Ceiling covering diagram





**RAL STANDARD**

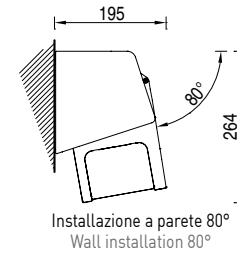
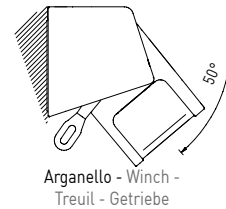
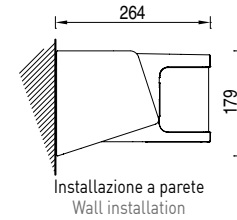
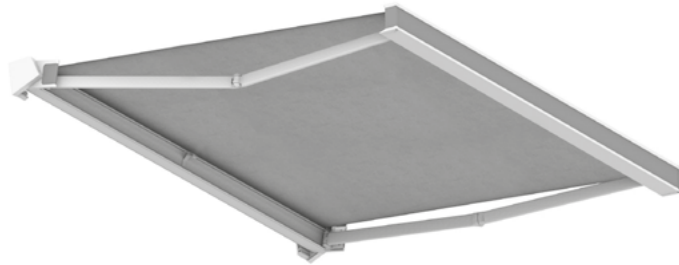
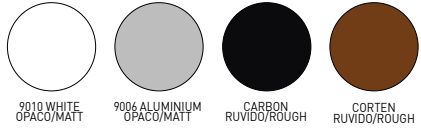
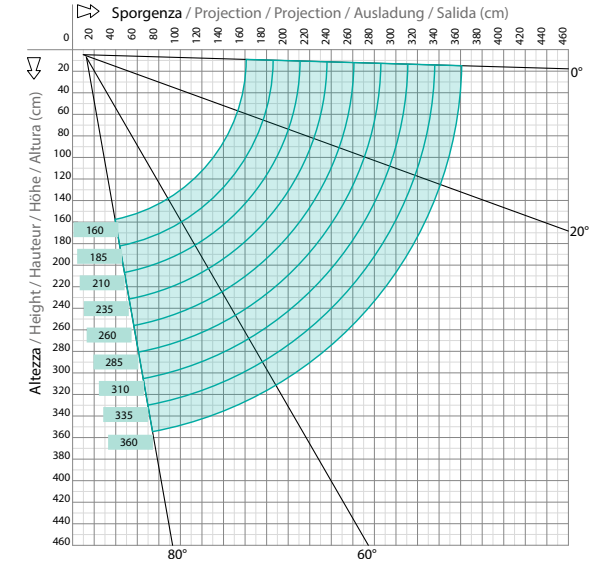


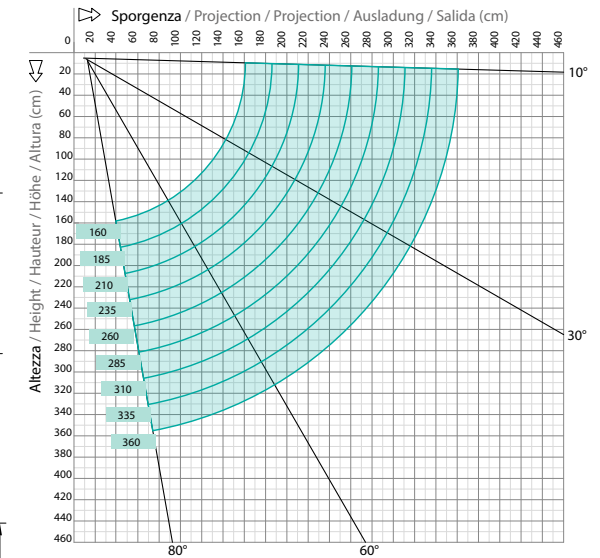
Diagramma di copertura a parete - Wall covering diagram



**COMBINAZIONI COLORE / COMBINATIONS / COMBINAISON / VARIANTEN**

	<b>C1</b>	<b>C2</b>	<b>C3</b>	<b>C4</b>	<b>C5</b>	<b>C6</b>	<b>C7</b>	<b>C8</b>	<b>C9</b>	<b>C10</b>	<b>C11</b>	<b>C12</b>	<b>C13</b>	<b>C14</b>	<b>C15</b>	<b>C16</b>
	9010	9010	9010	9010	9006	9006	9006	9006	CARBON	CARBON	CARBON	CARBON	CORTEN	CORTEN	CORTEN	CORTEN
	9010	9006	CARBON	CORTEN	9006	9010	CARBON	CORTEN	CARBON	9010	9006	CORTEN	CORTEN	9010	9006	CARBON

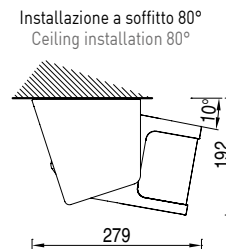
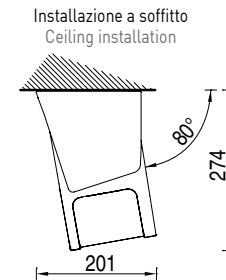
Diagramma di copertura a soffitto - Ceiling covering diagram



Ingombri minimi della tenda finita - 1 coppia bracci  
Minimum awning encumbrances - 1 pair arms  
Encombrentes minimum du store fini - 1 pair bras  
Minimaler Ausmaß der fertigen Markise - 1 Paar Arme

**!** **Tessuto saldato di serie (eccetto Liberty, Panama, Resinati)**  
Fabric welded as standard (except Liberty, Panama, waterproof fabrics)  
Toile soudée (sauf Liberty, Panama, Imperméables)  
Stoff serienmäßig geschweißt (außer Liberty, Panama, wasserdichte Stoffe)

Per aumenti TESSUTO e RAL vedi pagine 100/111 -  
For fabric and RAL increases see at pages 100/111  
Augmentation TISSU et RAL voir pages 100/111 - Für  
Aufpreise für RAL und Stoffe S. seiten 100/111



cm	
	2 BRACCI
160	216
185	241
210	266
235	291
260	316
310	366
360	416

**CONSIGLIATO  
SUGGESTED**

**POLIESTERE  
POLYESTER**  
solo + 4€  
only + 4€