

**RAL STANDARD**

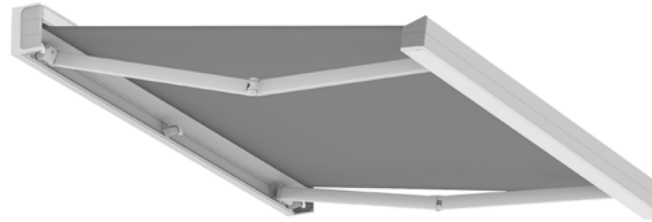
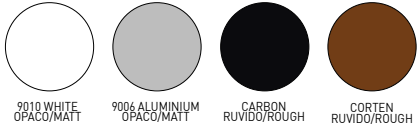
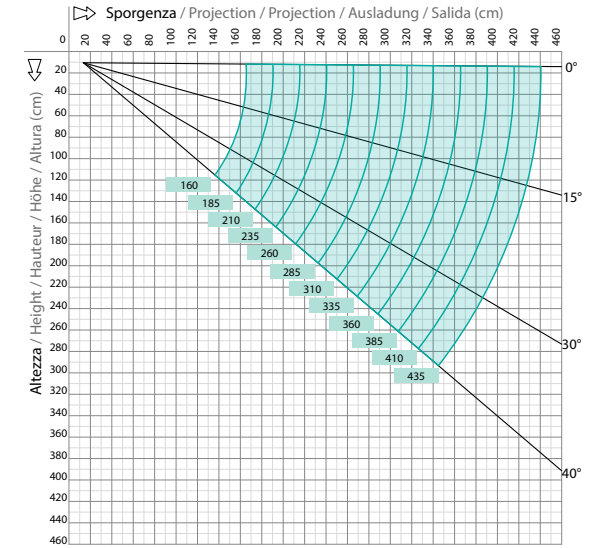


Diagramma di copertura a parete - Wall covering diagram



COMBINAZIONI COLORE / COMBINATIONS / COMBINAISON / VARIANTEN

	C1	C2	C3	C4	C5	C6	C7	C8	C9	C10BA	C11	C12	C13	C14	C15	C16
9010	9010	9010	9010	9010	9006	9006	9006	9006	CARBON	CARBON	CARBON	CARBON	CORTEN	CORTEN	CORTEN	CORTEN
9010	9006	CARBON	CORTEN	9006	9010	CARBON	CORTEN	CARBON	9010	9006	CORTEN	CORTEN	9010	9006	CARBON	

- Bracci / Arms / Bras / Arme
- ▶ Kit convogliatore / Kit conveyer / Kit convoyeur / Satz Konvoyer
- Supporto bracci-staffa parete-soffitto / arm support - wall or ceiling bracket / Bride mur-plafond / Armkonsolen wand-deckenhaltbügel

cm	↔	400	500	600	700	800	900	1000	1100	1200											
160	↻	2	2	2	4	4	4	4	6	6	2	3	3	5	5	5	5	7	7	6	6
185	↻	2	2	2	4	4	4	4	6	6	2	2	2	4	4	4	4	6	6	6	6
210	↻	2	2	2	4	4	4	4	6	6	2	3	3	5	5	5	5	7	7	6	6
235	↻	2	2	2	4	4	4	4	6	6	2	3	3	5	5	5	5	7	7	6	6
260	↻	2	2	2	3	4	4	4	6	6	2	3	3	4	5	5	5	7	7	6	6
310	↻	2	2	2	3	3	4	4	5	5	2	2	2	3	3	4	4	5	5	6	6
360	↻	-	2	2	2	3	3	4	5	5	-	3	3	3	4	4	4	5	5	6	6
410	↻	-	2	2	2	3	3	3	4	4	-	2	2	2	3	3	3	4	4	5	5
435	↻	-	2	2	2	2/3	3	3	4	4	-	3	3	3	3/4	4	4	5	5	6	6

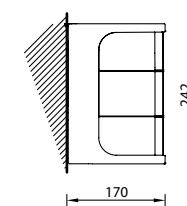
Ingombri minimi della tenda finita - 1 coppia bracci  
 Minimum awning encumbrances - 1 pair arms  
 Encumbrances minimum du store fini - 1 pair bras  
 Minimaler Ausmaß der fertigen Markise - 1 Paar Arme

	cm	↔
BRACCIO BALTEUS	160	221
BALTEUS ARM	185	246
BRAS BALTEUS	210	271
BALTEUS GELENKARME	235	296
	260	321
	310	371
	360	423
BRACCIO BALTEUS GIANT	410	473
STANDARD BALTESU GIANT	435	498
BRAS BALTEUS GIANT		
BALTEUS GIANT GELENKARME		

**CONSIGLIATO SUGGESTED**



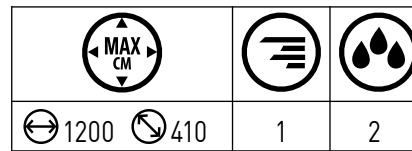
Installazione a parete  
Wall installation



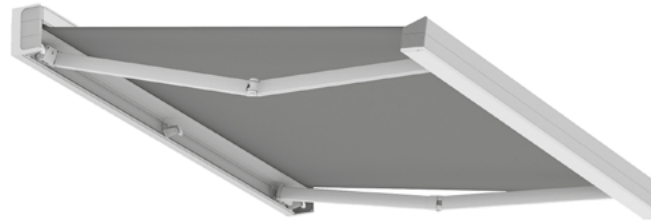
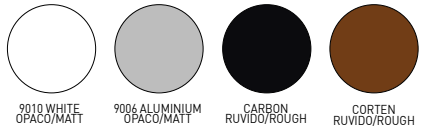
**! Tessuto saldato di serie (eccetto Liberty, Panama, Resinati) - Fabric welded as standard (except Liberty - Panama - waterproof fabrics)**  
 Toile soudée (sauf Liberty, Panama, Imperméables) - Stoff serienmäßig geschweißt (außer Liberty - Panama - wasserdichte Stoffe)

**! DISPONIBILE SOLO MOTORIZZATA - AVAILABLE ONLY MOTORIZED**  
 - DISPONIBILE SEULEMENT MOTORISÉ - NUR MIT MOTORANTRIEB MÖGLICH

# QUBICA PLUMB B52 + AKI LED



## RAL STANDARD



COMBINAZIONI COLORE / COMBINATIONS / COMBINAISON / VARIANTEN

	C1	C2	C3	C4	C5	C6	C7	C8	C9	C10BA	C11	C12	C13	C14	C15	C16
	9010	9010	9010	9010	9006	9006	9006	9006	CARBON	CARBON	CARBON	CARBON	CORTEN	CORTEN	CORTEN	CORTEN
	9010	9006	CARBON	CORTEN	9006	9010	CARBON	CORTEN	CARBON	9010	9006	CORTEN	CORTEN	9010	9006	CARBON

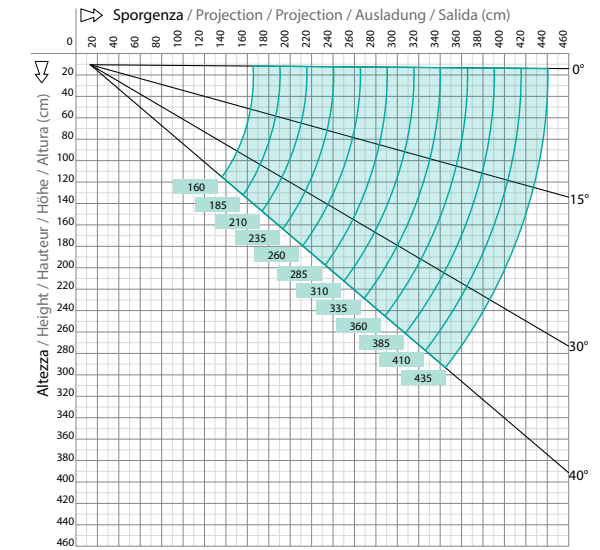
- Bracci / Arms / Bras / Arme
- ▶ Kit convogliatore / Kit conveyer / Kit convoyeur / Satz Konvoyer
- Supporto bracci-staffa parete-soffitto / arm support - wall or ceiling bracket / Bride mur-plafond / Armkonsolen wand-deckenhaltebügel

cm	↔									
↻		400	500	600	700	800	900	1000	1100	1200
160	■	2	2	2	4	4	4	4	6	6
	▼	2	3	3	5	5	5	5	7	7
185	■	2	2	2	4	4	4	4	6	6
	▼	2	3	3	5	5	5	5	7	7
210	■	2	2	2	4	4	4	4	6	6
	▼	2	3	3	5	5	5	5	7	7
235	■	2	2	2	4	4	4	4	6	6
	▼	2	3	3	5	5	5	5	7	7
260	■	2	2	2	3	4	4	4	6	6
	▼	2	3	3	4	5	5	5	7	7
310	■	2	2	2	3	3	4	4	5	5
	▼	3	3	3	4	4	5	5	6	6
360	■	-	2	2	2	3	3	4	4	5
	▼	-	3	3	3	4	4	5	5	6
410	■	-	2	2	2	3	3	3	4	4
	▼	-	3	3	3	4	4	4	5	5
435	■	-	2	2	2	3	3	3	4	4
	▼	-	3	3	3	4	4	4	5	5

Ingombri minimi della tenda finita - 1 coppia bracci  
 Minimum awning encumbrances - 1 pair arms  
 Encumbrances minimum du store fini - 1 pair bras  
 Minimaler Ausmaß der fertigen Markise - 1 Paar Arme

cm	↔
↻	
160	241
185	266
210	291
235	316
260	341
310	391
360	443
410	493

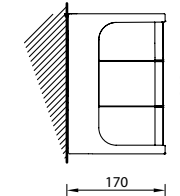
Diagramma di copertura a parete - Wall covering diagram



CONSIGLIATO SUGGESTED



Installazione a parete Wall installation



**! Tessuto saldato di serie (eccetto Liberty, Panama, Resinati) - Fabric welded as standard (except Liberty - Panama - waterproof fabrics)**  
 Toile soudée (sauf Liberty, Panama, Imperméables) - Stoff serienmäßig geschweißt (außer Liberty - Panama - wasserdichte Stoffe)

**! DISPONIBILE SOLO MOTORIZZATA - AVAILABLE ONLY MOTORIZED**  
 - DISPONIBLE SEULEMENT MOTORISÉ - NUR MIT MOTORANTRIEB MÖGLICH