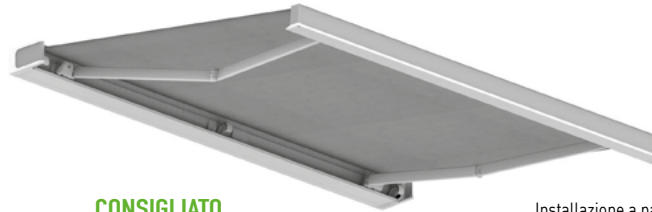
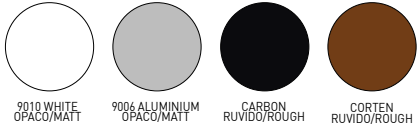


QUBICA FLAT B50

1200	360	2



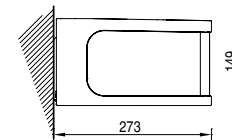
RAL STANDARD



CONSIGLIATO SUGGESTED



Installazione a parete
Wall installation



Tessuto saldato di serie (eccetto Liberty, Panama, Resinati)
Fabric welded as standard (except Liberty – Panama – waterproof fabrics)
Toile soudée (sauf Liberty, Panama, Imperméables)
Stoff serienmäßig geschweißt (außer Liberty – Panama – wasserdichte Stoffe)

COMBINAZIONI COLORE / COMBINATIONS / COMBINAISON / VARIANTEN

	C1	C2	C3	C4	C5	C6	C7	C8	C9	C10	C11	C12	C13	C14	C15	C16
	9010	9010	9010	9010	9006	9006	9006	9006	CARBON	CARBON	CARBON	CARBON	CORTEN	CORTEN	CORTEN	CORTEN
	9010	9006	CARBON	CORTEN	9006	9010	CARBON	CORTEN	CARBON	9010	9006	CORTEN	CORTEN	9010	9006	CARBON

- Bracci / Arms / Bras / Arme
- ▶ Kit convogliatore / Kit conveyer / Kit convoyeur / Satz Konvoyeur
- Supporto bracci-staffa parete-soffitto / Arm support-wall - Supports de bras / Bride mur-plafond / Armkonsolen/wand-/deckenhaltebügel

cm		400	500	600	700	800	900	1000	1100	1200
160	■	2	2	2	4	4	4	4	6	6
	▼	2	3	3	5	5	5	5	7	7
	■	2	2	2	4	4	4	4	6	6
185	■	2	2	2	4	4	4	4	6	6
	▼	2	3	3	5	5	5	5	7	7
	■	2	2	2	4	4	4	4	6	6
210	■	2	2	2	4	4	4	4	6	6
	▼	2	3	3	5	5	5	5	7	7
	■	2	2	2	4	4	4	4	6	6
235	■	2	2	2	4	4	4	4	6	6
	▼	2	3	3	5	5	5	5	7	7
	■	2	2	2	4	4	4	4	6	6
260	■	2	2	2	3	4	4	4	6	6
	▼	2	3	3	4	5	5	5	7	7
	■	2	2	2	3	4	4	4	6	6
310	■	2	2	2	3	3	4	4	5	5
	▼	3	3	3	4	4	5	5	6	6
	■	2	2	2	3	3	4	4	5	5
360	■	-	2	2	2	3	3	4	4	5
	▼	-	3	3	4	4	4	5	5	6
	■	-	2	2	2	3	3	4	4	5

Ingombri minimi della tenda finita - 1 coppia bracci
Minimum awning encumbrances - 1 pair arms
Encombrentes minimum du store fini - 1 pair bras
Minimaler Ausmaß der fertigen Markise - 1 Paar Arme

cm	
	2 BRACCI
160	220
185	245
210	270
235	295
260	320
310	379
360	428

Installazione a soffitto
Ceiling installation

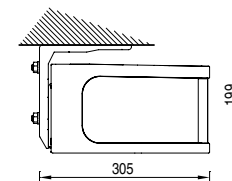


Diagramma di copertura a parete - Wall covering diagram

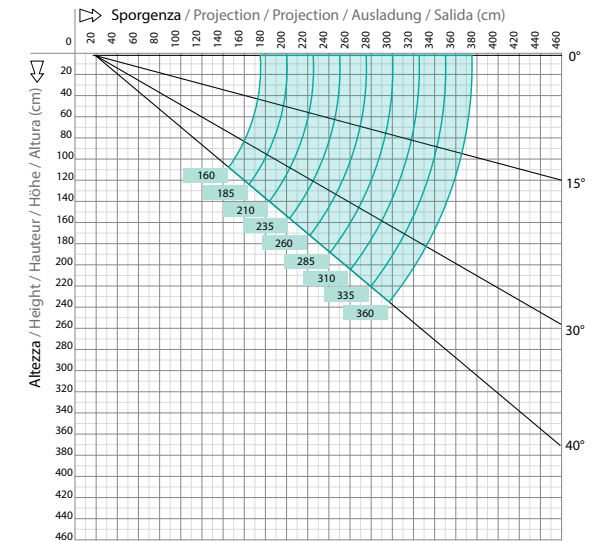
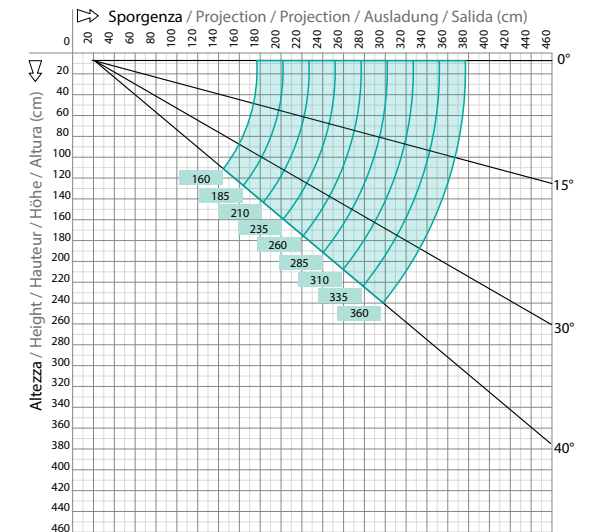


Diagramma di copertura a soffitto - Ceiling covering diagram



per aumenti TESSUTO e RAL vedi pagine 100/111 - For fabric and RAL increases see at pages 100/111
Augmentation TISSU et RAL voir pages 100/111 - Für Aufpreise für RAL und Stoffe S. seiten 100/111