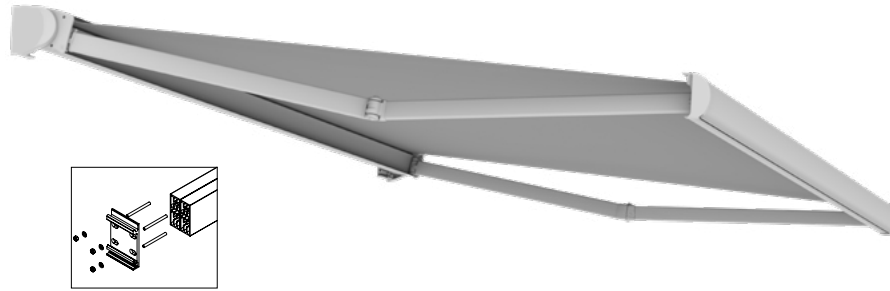
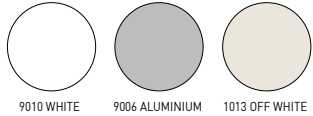


↔ 550 ↻ 310	1	1
↔ 500 ↻ 260	2	1

RAL STANDARD



Ingombri minimi della tenda finita - 1 coppia bracci
 Minimum awning encumbrances - 1 pair arms
 Encombrentes minimum du store fini - 1 pair bras
 Minimaler Ausmaß der fertigen Markise - 1 Paar Arme

cm	↔
↻	2 BRACCI
160	191
185	216
210	241
235	266
260	291
310	341

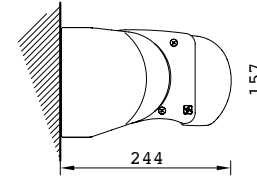
Tessuto saldato di serie (eccetto Liberty, Panama, Resinati)
 Fabric welded as standard (except Liberty, Panama, waterproof fabrics)
 Toile soudée (sauf Liberty, Panama, Imperméables)
 Stoff serienmäßig geschweißt (außer Liberty, Panama, wasserdichte Stoffe)

Per aumenti TESSUTO e RAL vedi pagine 100/111 -
 For fabric and RAL increases see at pages 100/111
 Augmentation TISSU et RAL voir pages 100/111 - Für
 Aufpreise für RAL und Stoffe S. seiten 100/111

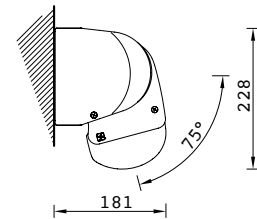
**CONSIGLIATO
 SUGGESTED**



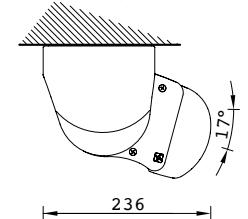
Installazione a parete
 Wall installation



Installazione a parete 75°
 Wall installation 75°



Installazione a soffitto 15°
 Ceiling installation 15°



Installazione a soffitto 90°
 Ceiling installation 90°

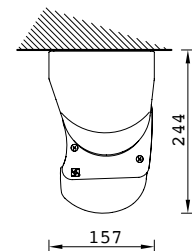


Diagramma di copertura a parete - Wall covering diagram

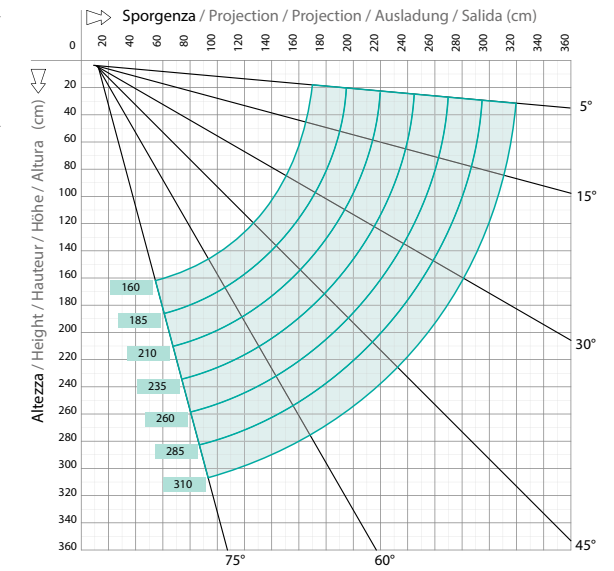


Diagramma di copertura a soffitto - Ceiling covering diagram

