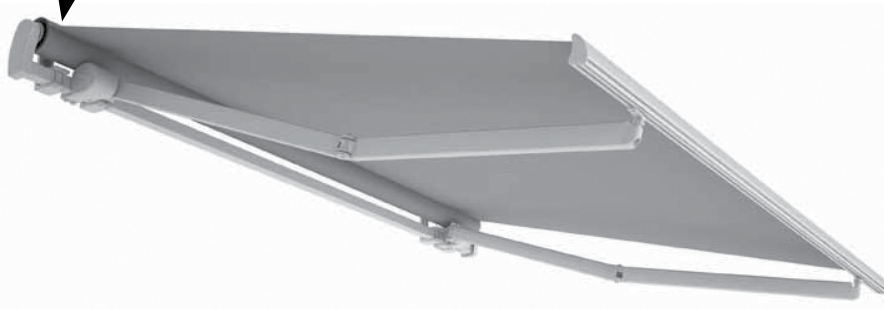
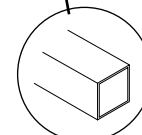
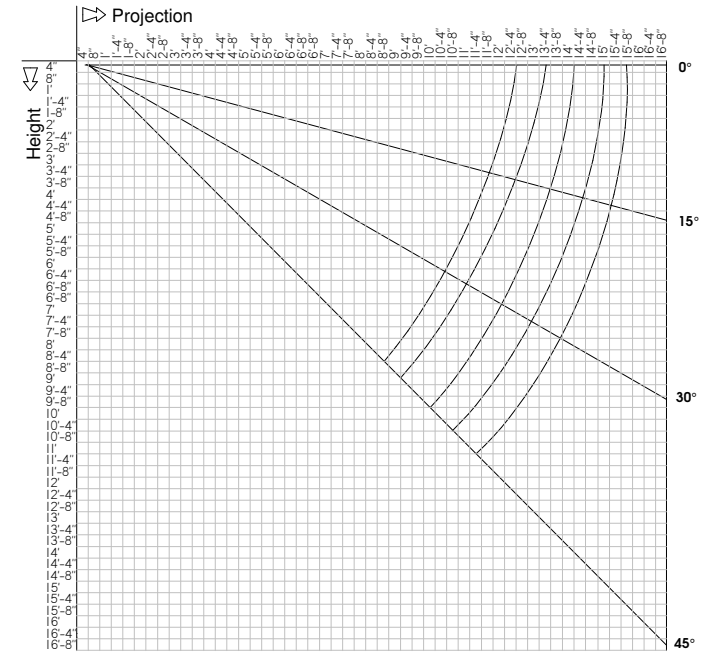


52 TRIUMPH

ACRYLIC

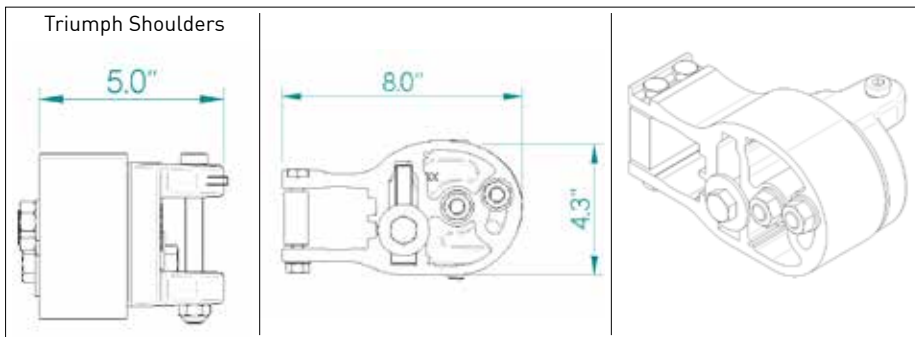


Wall and ceiling covering diagram



1.97" x 1.97"

Note: Awning may not hang exactly at 0° due to the weight of the front bar.



PRODUCT NOTES

- Widths available: 15'9" up to 30'
- Projections available: 13' 5", 14' 3", 15' 1", 15' 11"
- Arm style: belt arms on all widths and projections
- Operation: motor option only
- Mounting options: roof, soffit, and wall
- Wind rating: Class Rating 1
- Drop valance available up to 24' width and 15' 1" projection
- Center support on units over 16' width
- Hoods over 23' width will be spliced
- Roof mount brackets available: 12", 16", and 24"
- Soffit mount brackets available
- Prices and motor options are influenced by the number of arms on retractable awnings
- **All units over 26'** on width specification have limited shipping options due to final packaging size with additional parts required for awning units enclosed in the box. The standard common carrier restriction for normal shipping rates on pup trailers is based on a maximum 27' length that restricts single frame orders to 26' widths. All other orders will require either special freight quotations or spliced frame systems for order configuration. Please call customer service for any questions or clarification necessary.
- Split roller option is not available on the Triumph
- Cross arms are not available on the Triumph
- Torque sensing motors are not available on the Triumph

** For complete unit notes, specifications, and installation instructions, please see the Product Reference Guide **

*Hood option is recommended to help prevent water damage to motor which is not covered under warranty guidelines

AVAILABLE COLORS



WHITE
RAL 9010



SAND



CHARCOAL