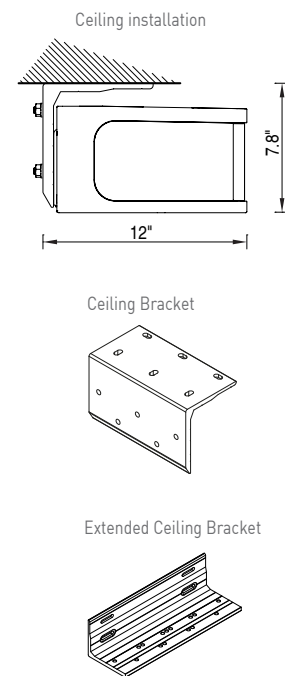
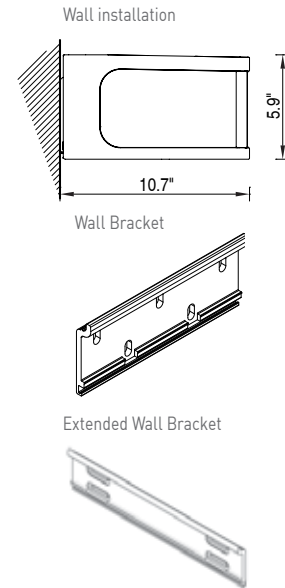
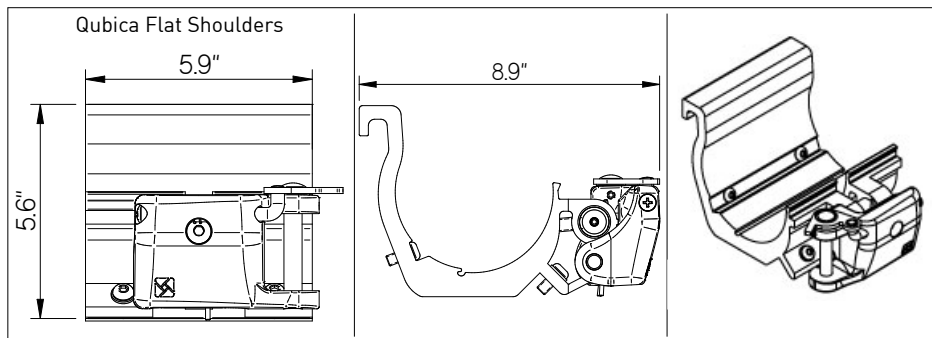
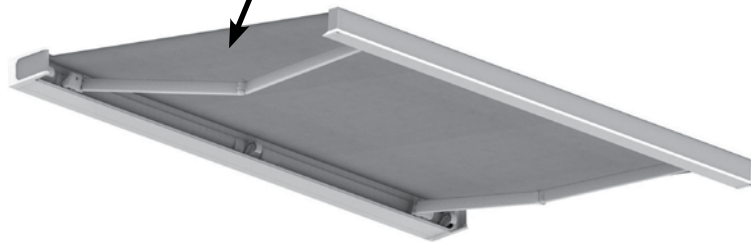


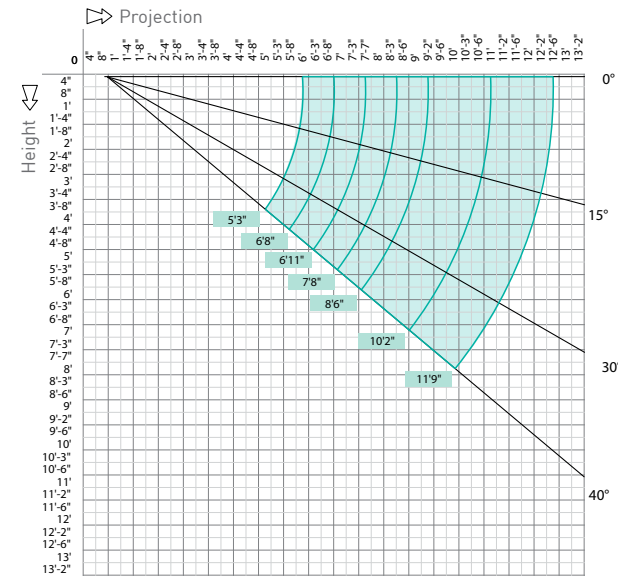
QUBICA FLAT

33

ACRYLIC

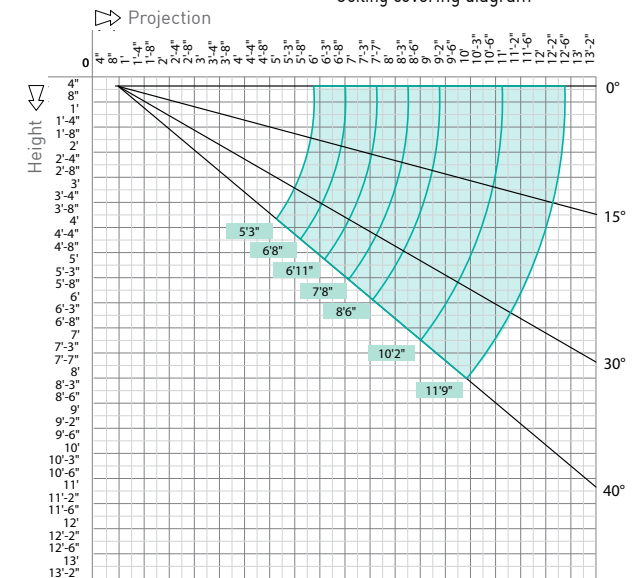


Wall covering diagram



Note: Awning may not hang exactly at 0° due to the weight of the front bar.

Ceiling covering diagram



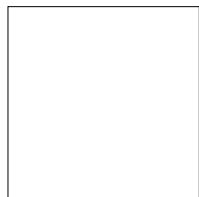
Note: Awning may not hang exactly at 0° due to the weight of the front bar.

PRODUCT NOTES

- Widths available: 7'4" - 23'0"
- Projections: 5' 3", 7' 8", 8' 6", 10' 2", 11' 9"
- Arm style: belt arms with LED or AKI arms (optional) on all widths and projections.
- 24V DC Receiver comes standard on all Qubica units.
- Operation: motor and manual option. Manual option available up to 10'2" projections and 19'8" widths.
- Mounting options: roof, soffit, and wall
- Recommended method of installation is with a header board or extended bracket.
- Roof installation available only with a header board.
- Wind ratings: Class 1
- Drop valance and valance option are not available.
- 1:10 gear, Somfy and Moon motors.
- Custom colors available. Two different colors can be used. Additional charges and lead time apply.
- Awning is strictly for shade, no PVC fabric available.
- Additional 22" brackets needed if the end of the arm locations are located between two studs.
- Awning is not available with a cross arm option, see minimum size table.

** For complete unit notes, specifications, and installation instructions,
please see the Product Reference Guide **

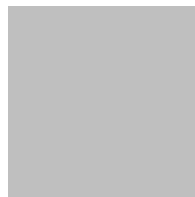
AVAILABLE COLORS



WHITE
(RAL 9010)



CHARCOAL



GRAY
RAL 9006
White Aluminum)

COLOR COMBINATION GUIDE

