



## SHED AWNINGS



Limitless	5'	90mph	60lb/sf	Learn More

The **Shed Awning** by KE is an industry workhorse – a classic that has stood the test of time and remains the awning of choice for a wide variety of restaurants, retail stores and businesses of all sizes.

The shed awning provides protection from direct sun exposure, not only protecting your customers from the elements, but also helping to eliminate heat buildup and sun bleaching that can destroy furnishings, inventory and window displays. An awning can help reduce heating and cooling costs all year, too.

A series of shed awnings can be installed side by side to create a facade of any desired length over windows and doors. With the addition of **custom graphics**, your shed awning can carry your business' identity, attracting customers to your location and promoting your unique brand, your phone number and your signature style within your community.

Available in a wide variety of high quality powder coated colors, styles and shapes, shed awnings are made to your exact specifications every time. Choose from styles with sides or no sides, and from three different kinds of valance, or no valance.

Trust KE to meet all your commercial shading requirements.

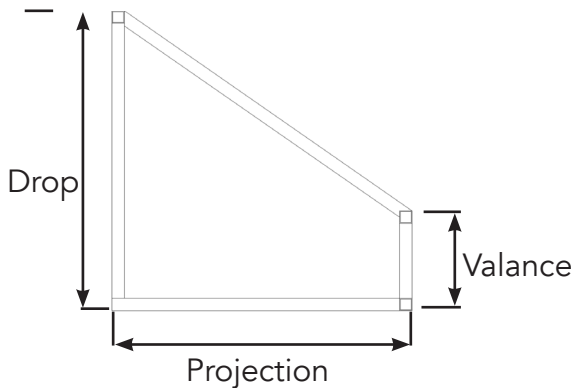
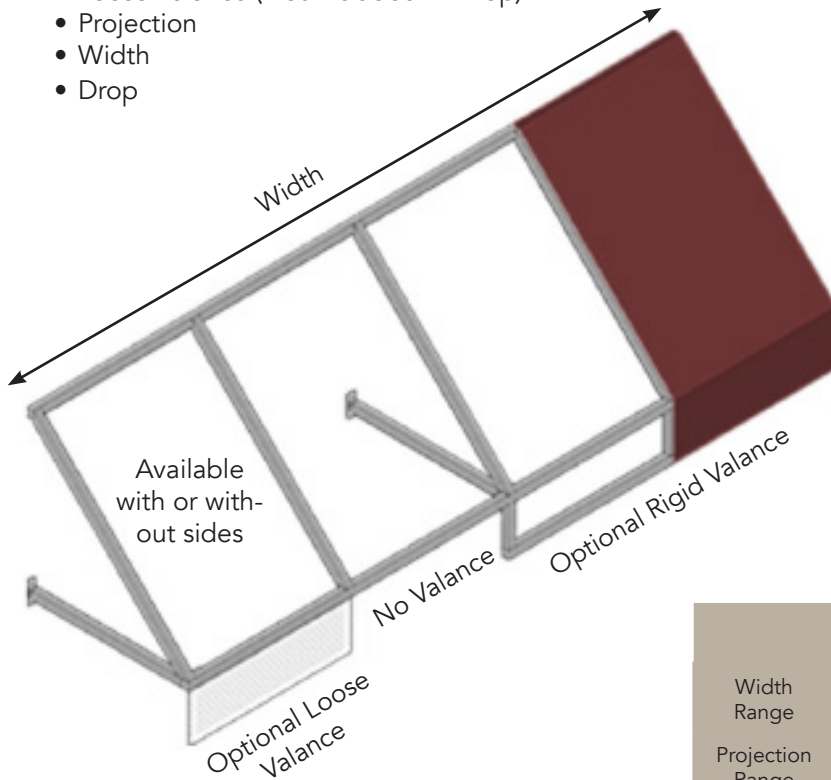


Chestnut Hill, Massachusetts

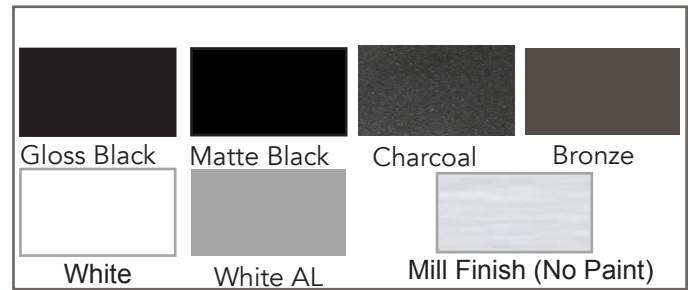
# TYPES OF SHED AWNINGS

## BASIC MEASUREMENTS

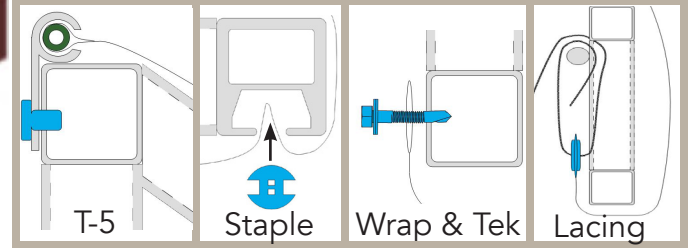
- Rigid Valance (Include In Drop)
- Loose Valance (Not Included In Drop)
- Projection
- Width
- Drop



## Standard Powder Coat Colors



## FABRIC ATTACHMENT DETAILS:



## PRODUCT OVERVIEW

Width Range	4'-25'	Frame	Welded Stationary Awning
Projection Range	Up To 5'-0"	Drop Range	Up To 7'-0"
Mounting Options	Wall Surface	Frame Color Options	An up-charge will be applied to the base price of the project for powder coated finishes. Standard colors are Matte Black, Jet Black, White, Bronze, charcoal and White Aluminum
Fabric Options	100% Acrylic Fabric Colors, Alternate Vinyl Fabrics Available		

The fabric manufacturers warrant fabrics. All fabric warranties are for fabric replacement costs only, and do not include any labor.

Structural integrity of welded awning frame is warranted for a period of ten years

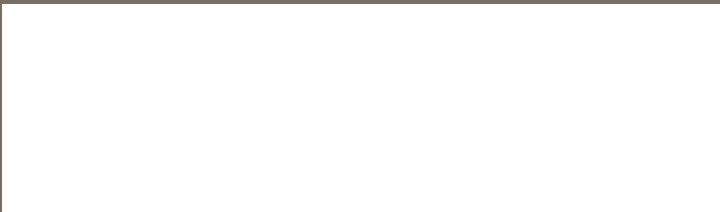
### Note:

- Windows or doorway
- Height of frame above walkway
- Drains or down spouts
- Light fixtures
- Structural columns
- Uneven mounting surfaces
- Recessed areas

## Custom Graphics

Lettering and signage can be applied to fabrics in a variety of methods. Decorate your awning with your company's logo, name, address and slogan.

## KE AFFILIATE:



keoutdoordesign.us