

R

ETRACTABLE AWNINGS

KE

ENJOY THE OUTDOORS

KE THE RIGHT CHOICE

FOUR IMPORTANT REASONS TO CHOOSE KE

BAT GROUP:

Thanks to KE's experience and strong organization, we are a leading company in the field of Retractable Awnings. KE is part of the BAT GROUP, a multinational company which guarantees positive synergies between materials, innovation and choices. KE is always investing in research in order to reach new solutions to improve functionality and elegance.

DESIGN:

The aim of KE designs is to achieve the optimal integration between the architecture and protection needs. Our design department is constantly involved in innovative research to add value and preserve the quality of the outdoor environment.

KE PATENTS:

KE offers innovative, operational and patented techniques. All of the KE shading systems come from creative ideas which offer unique advantages in application and durability.

LONG-TERM INVESTMENT:

KE uses only the finest materials available from around the world to produce truly superior additions to your customers' home. Our advanced manufacturing and skilled craftsmanship technologies ensure KE customers will receive the highest quality products possible.

KE ENJOY THE OUTDOORS



DISCOVER YOUR WORLD...

LIVE THE OUTDOORS!

Create an eye-catching look for your deck or patio while adding living space for you to enjoy!

Your KE Retractable awning provides high grade UV protection, allowing everyone to stay outdoors longer without concern of the harmful effects of the sun.

From full-featured awnings to affordable entry-level models, the Retractable family of awnings has what you're looking for. Providing on-demand solar protection, Retractable awnings expand your home beyond its walls. With the touch of a button or turn of the crank, these awnings transform your deck, patio or terrace into an attractive and comfortable expanded living space.

DESIGN AND FUNCTIONALITY ...

**ADD LIVING SPACE TO YOUR DECK OR PATIO BY
CREATING THE PERFECT OUTDOOR ENVIRONMENT
FOR YOU, FAMILY, AND FRIENDS TO ENJOY**



An extra living space that everyone will enjoy... transform your deck, patio, or terrace into the best room of the house. Keep your home's traditional appearance by installing a stationary awning or create a more contemporary look with a retractable system.

Maximize your outdoor living space, provide relief from the sun's harmful rays, reduce energy costs and create an elegant expression of your personal taste and style.

Versatile and beautiful... our awnings are custom-crafted and professionally installed to create a cool, natural extension to your home.

Start enjoying the outdoors!



SPECIFICATION CHART	CASSETTE FOLDING ARM BELLA PLUS	CASSETTE FOLDING ARM DOMINA	OPEN ROLLER FOLDING ARM TRIUMPH
Width (1/4" increments)	7'4" - 26'	6'5" - 20'	15'9" - 30'
Projection	5'3", 7'8", 8'6", 10'2", 11'9", 13'5", 14'3"	5'3", 7'8", 8'6", 10'2", 11'9"	13'5", 14'3", 15'1", 15'11"
Arm type (belt or cable)	Belt arms	Belt arms	Belt arms
Cassette options	Full & semi	Full cassette	N/A
Hood	Hood not needed with cassette option	Hood not needed with cassette option	Recommended for protection of motor and warranty
Drop valance option	Full & semi and available only up to 19'10" width and up to 11'9" projection	N/A	Available up to 24' width and 15'1" projection
Fabric selections	Acrylic fabrics	Acrylic fabrics	Acrylic fabrics
Complete fabric protection	Yes	Yes	No
Motorized or manual	Available as motor or manual	Available as motor or manual	Motorized only
Roller tube size	80	80	85
Frame colors	White, Brown, Sand, Charcoal, Jet Black	White, Brown, Sand, Charcoal, Jet Black	White, Sand, Charcoal
Custom colors	Available up to 10' 2" projection	Yes	N/A
Framework warranty	Limited Lifetime Warranty	Limited Lifetime Warranty	Limited Lifetime Warranty
Roof mount	Yes	Yes	Yes
Soffit mount	Yes	Yes	Yes (hood not available with soffit mount)
Wall mount	Yes	Yes	Yes
On top of any existing structure or Pergolas	N/A	N/A	N/A

OPEN ROLLER FOLDING ARM ELITE PLUS	OPEN ROLLER FOLDING ARM REGAL	TENSION SHADE SYSTEMS SPACE	TENSION SHADE SYSTEMS SPACE WALL
3'8" - 46'	6'1" - 23'	5' - 23'	5' - 23'
5'3", 7'8", 8'6", 10'2", 11'9", 13'6"	5'3", 7'8", 8'6", 10'2", 11'2"	5' - 23'	5' - 18'
Belt arms	Cable arms	Gas pistons guide rails	Gas pistons guide rails
N/A	N/A	Full	Full
Recommended for protection of motor and warranty	Recommended for protection of motor and warranty	Hood not needed with cassette option	Hood not needed with cassette option
Available up to 24' width and 11'9" projection	N/A	N/A	N/A
Acrylic fabrics	Acrylic fabrics	Acrylic fabrics	Acrylic fabrics
No	No	Yes	Yes
Available as motor or manual	Available as motor or manual	Motorized only	Motorized only
80	70	80	80
White, Brown, Sand, Charcoal, Jet Black	White, Sand	White, Charcoal	White, Charcoal
Yes	N/A	N/A	N/A
Limited Lifetime Warranty	8 year warranty	*Limited Lifetime Warranty *(gas pistons 2 year warranty)	*Limited Lifetime Warranty *(gas pistons 2 year warranty)
Yes (not recom- mended with R-Pitch option)	Yes	N/A	Yes used with header board
Yes (hood not avail- able with soffit mount)	Yes (hood not avail- able with soffit mount)	N/A	Yes
Yes	Yes	N/A	Yes
N/A	N/A	Yes	N/A

SPECIFICATION CHART	TENSION SHADE SYSTEMS PINNACLE ONE	TENSION SHADE SYSTEMS PINNACLE TWO
Width (1/4" increments)	3' - 16' per module (max 48' width)	3' - 16' per module (max 48' width)
Projection	3' - 16'	3' - 16'
Arm type	Spring/cord tensioned guide rails	Spring/cord tensioned guide rails
Cassette options	Full	Full
Hood	Hood not needed with cassette option	Hood not needed with cassette option
Drop valance option	Available with optional drop screen	N/A
Fabric selections	Acrylic or screen	Acrylic or screen
Complete fabric protection	Yes	Yes
Motorized or manual	Motorized only	Motorized only
Roller tube size	80	80
Frame colors	White, Brown, Sand, Charcoal	White, Brown, Sand, Charcoal
Custom colors	N/A	N/A
Framework warranty	5 year warranty	5 year warranty
Roof mount	Yes	N/A
Soffit mount	N/A	N/A
Wall mount	Yes	N/A
On top of any existing structure or Pergola	N/A	Yes

SPECIFICATION CHART	DROP ARM WINDOW AWNING TOPAZ	DROP ARM WINDOW AWNING ONYX
Width (1/4" increments)	3' - 16'	3' - 40'
Projection	2'2", 2'7", 3'3", 3'11", 4'7", 5'3", 5'11"	2'2", 2'7", 3'3", 3'11", 4'7", 5'3", 5'11"
Arm type	Spring loaded arms	Spring loaded arms
Cassette options	Full	N/A
Hood	Hood not needed with cassette option	Recommended for protection of motor and warranty
Drop valance option	N/A	N/A
Fabric selections	Acrylic fabrics	Acrylic fabrics
Complete fabric protection	Yes	N/A
Motorized or manual	Available as motor or manual	Available as motor or manual
Roller tube size	70	70
Frame colors	White, Brown, Sand	White, Brown, Sand
Custom colors	N/A	N/A
Framework warranty	5 year warranty	5 year warranty
Roof mount	N/A	N/A
Soffit mount	Yes	Yes
Wall mount	Yes	Yes
On top of any existing structure or Pergola	N/A	N/A

RETRACTABLE AWNING FEATURES



Maximum width dimensions
on a single unit up to 46',
projection up to 15' 11"



Roller Bat.
Patented fabric rolling
designed the fabric roll
up by allowing the fabric
on the roller tube to attach
flat, eliminating the normal
bump on the roller tubes



Overall dimension:
Structural elements with
minimized proportions
permit a high aesthetic
impact



Wind resistance:
all products receive
rigorous environmental
testing — industry standard
classification - EN1932



Ease of installation:
Thanks to the fastening
system design which allows
the awning to be installed
on most mounting surfaces



Fabrics:
A wide range of fabrics are
available: over 500 fabrics
to choose from

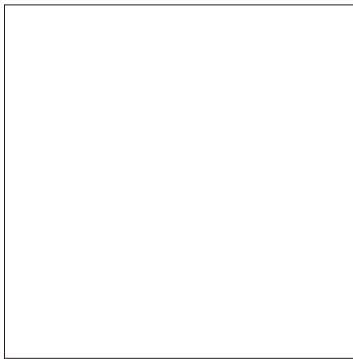


Automation:
climate sensors (wind, rain,
sun), combined with cutting
edge technology, allows
customization for opening
and closing the awning.
Moreover, the smart phone
and tablet app. allows
control at home or away

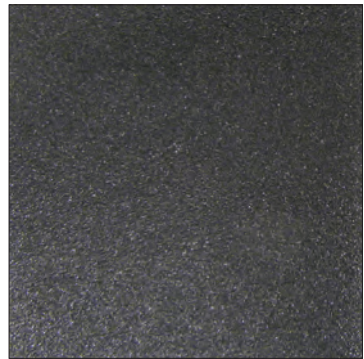


Lateral arms:
Designed for maximized
life duration

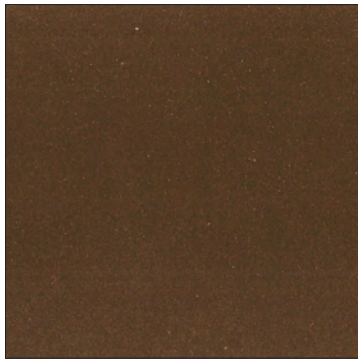
STANDARD FRAME COLORS



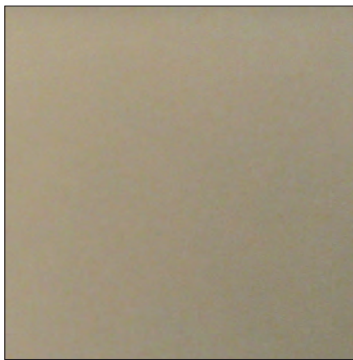
WHITE



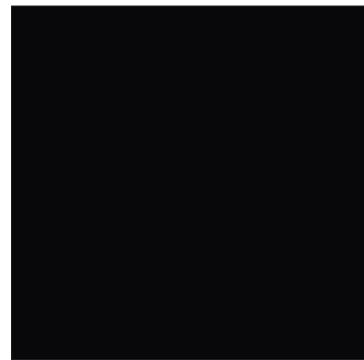
CHARCOAL



BROWN



SAND



*JET BLACK

Custom Frame Colors — Available upon request on certain units.

Standard Frame Colors — Where applicable.

*Jet Black is available only on Domina, Bella Plus, and Elite Plus

VALANCE STYLES



Classic



Greek Key



Straight



Wave



European

BELLA PLUS

BELLA PLUS EXTENDED WITH DROP VALANCE

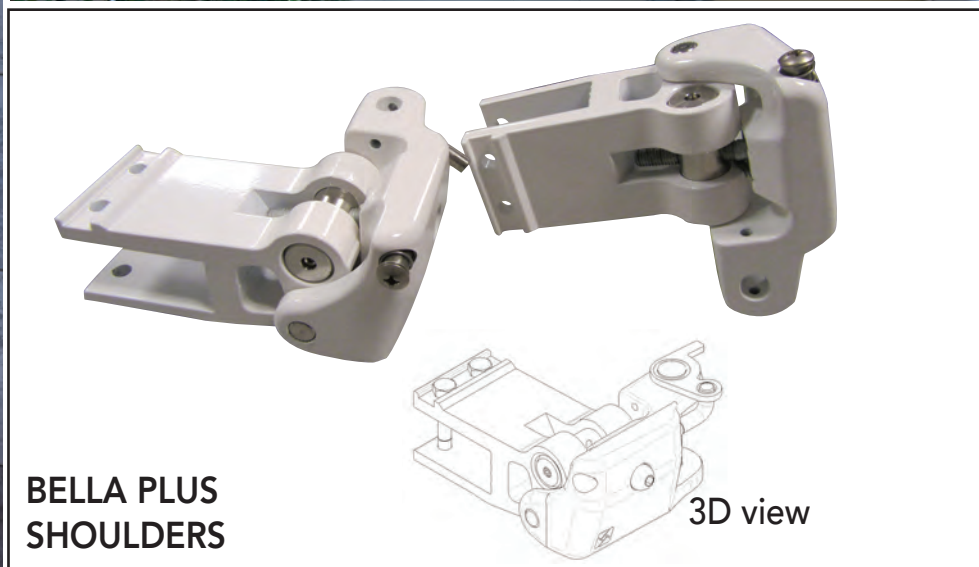
Full or Semi Cassette design features a complete profile design option that completely encapsulates your awning for total protection from the environment.

The profiles for the front rail, bottom cover, and optional backside offer a variety of choices for the awning design and performance capability. With arm projections available to up to 14'3", this awning also has a direct mounting bracket setup from the mounting torsion bar integrated into the design.

An optional manual drop valance is available on the full and semi-cassette units.

LED lights are available on all projections.

BELLA PLUS CLOSED



Semi Cassette



Full Cassette



Semi Cassette Drop Valance



Full Cassette Drop Valance

DOMINA



Intensify the look of your home with our newer model. The Domina is light and fits comfortably on wall or soffit combining classical design with advanced technology.

Easy to install, easy to adjust pitch, beautiful, sleek and all contained in its own cassette protecting your fabric from harsh elements.

LED lights are available on all projections.



DOMINA EXTENDED



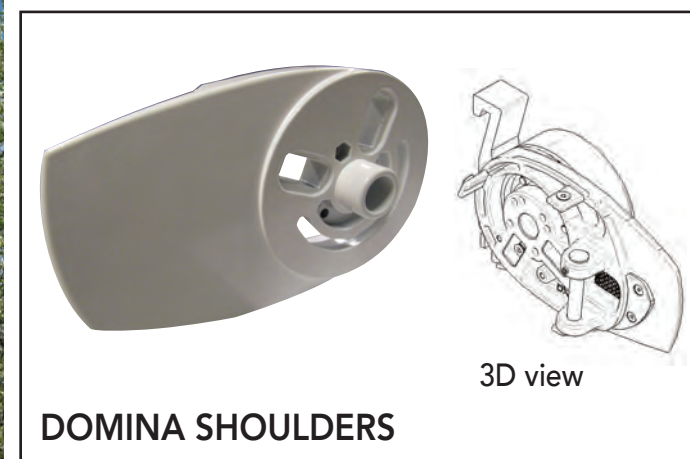
DOMINA CLOSED



DOMINA EXTENDED



DOMINA EXTENDED



DOMINA SHOULDERS

TRIUMPH

The Triumph is practical, yet capable of creating an elegant and durable living addition to any home.

Designed for durability and maintenance-free operation, offering the finest components available in the industry. As our largest available model with projections up to 15' 11", the Triumph is the most practical solution when extensive projections are required.

Optional drop valance available up to 24' widths and projection up to 15' 1".



TRIUMPH ROOF MOUNT EXTENDED



TRIUMPH ROOF MOUNT EXTENDED



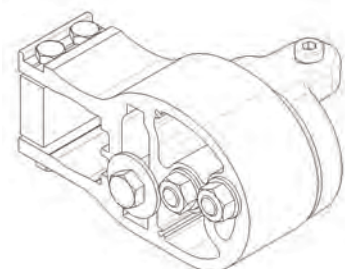
TRIUMPH ROOF MOUNT EXTENDED



TRIUMPH ROOF MOUNT CLOSED



TRIUMPH RETRACTED SIDE VIEW



TRIUMPH SHOULDERS

3D view

ELITE PLUS

Elite Plus is our most versatile retractable awning; an adjustable retractable awning system that allows you to fine tune your late day sun protection.

The optional "R-Pitch" adjustable shoulder with its patented swivel wrist allows you to drop each corner independently with a simple eyelet and manual hand crank system.

Optional drop valance available up to 24' widths and projection up to 11' 9".

LED lights are available on all projections.





ELITE PLUS ROOF MOUNT EXTENDED
WITH DROP SCREEN SIDE VIEW



ELITE PLUS WITH DROP SCREEN



ELITE PLUS RETRACTED



ELITE PLUS WITH DROP SCREEN



ELITE PLUS
ADJUSTABLE
SHOULDER
WITH
R-PITCH



ELITE PLUS
STANDARD
SHOULDER



CROSS ARMS

REGAL

The Regal is KE's most affordable custom made awning where style meets value. By adding this aesthetically pleasing sun protection, the Regal gracefully compliments the exterior of any home. The simplicity of the design is available in two standard frame colors of white and sand with a custom width up to 23' wide with a maximum projection of 11'2". The customization of this size range and features is very competitive economically in the market without sacrifice on the component design and durability.



REGAL EXTENDED



REGAL EXTENDED



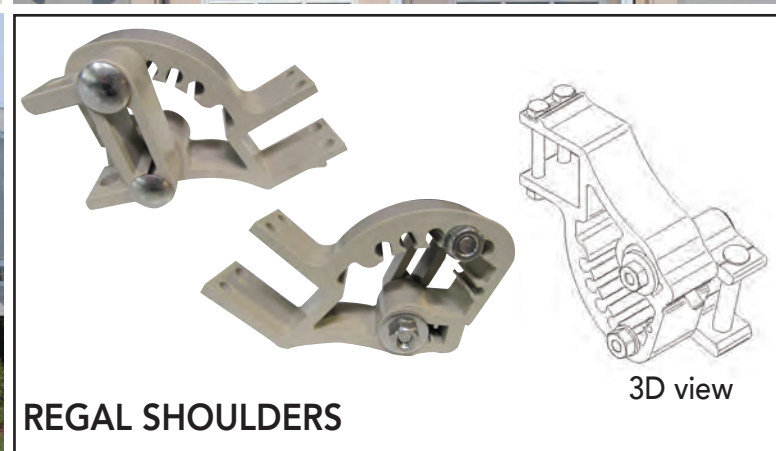
HOOD - WALL MOUNT



REGAL RETRACTED



REGAL EXTENDED



REGAL SHOULDERS

3D view

SPACE

Space is an elegant and modern tension roll-up shade system designed to mount with bracket attachment to shade open areas onto pre-existing substructures such as verandas and pergolas.

Easy to install and equipped with a full cassette, the Space is characterized by guide rails that are adjustable on the outside width position (up to 1'8" moving inward). The fabric roll-up system is tensioned by gas piston struts with cables for optimal performance on a custom size maximum projection range up to 23' and a maximum 23' width.



SPACE WALL

Space Wall is an elegant and modern tension roll-up shade system designed to mount with bracket attachment to wall, soffit, or roof applications to shade open areas with supporting leg posts.

Easy to install and equipped with a full cassette, the Space Wall is characterized by guide rails that are adjustable on the outside width position (up to 1' 8" moving inward). The fabric roll-up system is tensioned by gas piston struts with cables for optimal performance on a custom size maximum projection range up to 18' and a maximum 23' width.



PINNACLE ONE

The Pinnacle One tension roll-up shade system into a full cassette creates a pergola post setup with direct attachment of the cassette to the building structure to shade open space areas.

With spring/cord technology on fabric tensioning, the maximum width and projection capability is 16' x 16' in a single module. Additional modules can expand the configuration to a maximum overall width of 48' width with dual track guide rails between modules attached to a single shared post column.

Drop screen options can be added to the front side of the unit for more protection on low angle sun exposure.





PINNACLE ONE USING 3 BAYS



PINNACLE ONE USING 3 BAYS

PINNACLE TWO

The Pinnacle Two tension roll-up system into a full cassette that can be top mounted on an end user provided sub-structure (pergolas, aluminum or wooden patio covers, lattices, etc.) and includes the same engineering features of the Pinnacle One without the front leg posts for easy mounting to the structure. Variable height and side to side adjustment mounting brackets are available for easier integration onto the structure.

With spring/cord technology on fabric tensioning, the maximum width and projection on the capability is 16' x 16' in a single module. Additional modules can expand the configuration to a maximum overall width of 48' width with dual track guide rails between modules.

An optional wall bracket is available for backside cassette mounting attachment to the building structure when top mounting is not feasible. In this configuration, the front side of the guide rail would need to be attached to the structure with a top mounting bracket.



PINNACLE TWO



PINNACLE TWO



PINNACLE TWO

TOPAZ

This cassette retractable drop arm window awning in a cassette is perfect for windows up to 16' wide. The spring loaded arm tension guarantees a taut fabric cover that can be dropped to a 160 degree position just short of a totally vertical application while allowing some light to still transmit in from the open sides of the awning. The sleek design of the front rail fits flush against the cassette housing that contains the fabric roller for a more complete finished and compact appearance when the unit is retracted.



ONYX

This open roller drop arm window awning has a wider width size range up to 40'. With additional arm placements for support, the unit can cover wider window areas where attachment is possible for maximizing solar protection. The spring loaded arm tension guarantees a taut fabric cover that can be dropped to a 160 degree position just short of a totally vertical application while allowing some light to still transmit in from the open sides of the awning. An optional hood with side covers is available for top protection on the open fabric roller for a beautiful finished appearance.



ONYX INSIDE VIEW



WALL MOUNT



ONYX BALCONY RETRACTED



FRONT BAR

NOTES

KE USA, Inc.
445 Bellvale Road
Chester, NY 10918
888-387-2765
845-610-1100

KE USA, Inc.
California Division
22220 Opportunity Way, Suite 104
Riverside, CA 92518
844-387-2765

KE USA, Inc.
Commercial Division
38 Pond Lane, Suite B
Middlebury, VT 05753
802-388-7309

www.keoutdoordesign.com/us