

E

EXTERIOR SCREENS

KE

ENJOY THE OUTDOORS



KE THE RIGHT CHOICE

FOUR IMPORTANT REASONS TO CHOOSE KE

BAT GROUP:

Thanks to KE's experience and strong organization, we are a leading company in the field of Exterior Solar Screens. KE is part of the BAT GROUP, a multinational company which guarantees positive synergies between materials, innovation and choices. KE is always investing in research in order to reach new solutions to improve functionality and elegance.

DESIGN:

The aim of KE designs is to achieve the optimal integration between the architecture and protection needs. Our design department is constantly involved in innovative research to add value and preserve the quality of the outdoor environment.

KE PATENTS:

KE offers innovative, operational and patented techniques. All of the KE shading systems come from creative ideas which offer unique advantages in application and durability.

LONG-TERM INVESTMENT:

KE uses only the finest materials available from around the world to produce truly superior additions to your customers' home. Our advanced manufacturing and skilled craftsmanship technologies ensure KE customers will receive the highest quality products possible.

KE ENJOY THE OUTDOORS

Go Green and Reduce Heat Gain & Energy Cost

Exterior Solar Screens effectively reflect up to 88% of solar energy, decreasing your home's temperature. Inside temperatures of homes protected by Exterior Solar Screens can be up to 10°F cooler than non-protected homes.





EXTERIOR SOLAR SCREENS

BLOCK THE SUN NOT YOUR VIEW CREATE A PROTECTIVE ENVIRONMENT FOR YOU TO ENJOY YEAR LONG — CUSTOM BUILT FOR HOME OR BUSINESS

Our patented exterior solar screens are stylish and custom made. With an incredible array of custom configurations designed to integrate in to your specific architecture, KE solar screens will provide comfort and added value to your property with optional performance and durability at the touch of a button with motorized operation. Perfect for patio openings, windows, sliding glass doors, sunrooms, solariums, etc.



FEATURES AND BENEFITS EXTERIOR SOLAR SCREENS

- Exterior screens are practical and functionally designed to control up to 99% of the sun's harmful UV rays from solar radiation that can cause skin damage, negative vision and fatigue effects from glare, and damage to drapes, furnishings, and carpeting.
- Premium grade fabric selections with a wide array of colors and texture have specific variable fabric openness options from 50% to 100% total blackout. The solar properties of these materials will control environmental factors such as solar transmittance, absorptance, and reflectance factors resulting in reducing the transfer of heat from convection for optimizing internal thermal temperature values. The end result is cost energy savings while maintaining the view that is right for you.

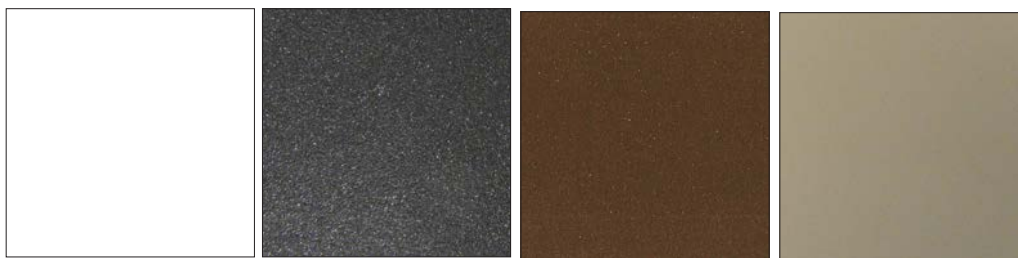


- By enhancing the aesthetics and décor both from the interior and exterior perspective, optical fabric properties also control visible light transmission for glare reduction and daytime privacy.
- Extruded powder coated aluminum profiles and corrosion resistant stainless steel components are available as an open roller (CS0) or as an enclosed box based on width into a 4", 5", or 6" cassette application (CS4, CS5, CS6). Standard colors include white, sand, brown, charcoal, upgraded custom colors are also available.
- Multiple fabric guidance options on the bottom hem bar are available including cable, pratika rail, standard track rail, zip track rail, recessed zip track rails, rod or free hanging.
- Custom width and drop size range based on product specifications and operation.

CS0 — OPEN ROLLER EXTERIOR SCREEN

- CS0 - Width 3' – 26', Drop: 3' – 16'
 - Variable Openness Screen Mesh: Textilene, Phifer, Mermet, Ferrari, Awntex- (horizontal seam placement when necessary)
 - Solid Fabric Material: Sunbrella Solution Dyed Acrylic (vertical seam placement)
 - Blackout Fabric
 - Clear Vinyl Integration (limited operating temperature range)

STANDARD FRAME COLORS



WHITE

CHARCOAL

BROWN

SAND

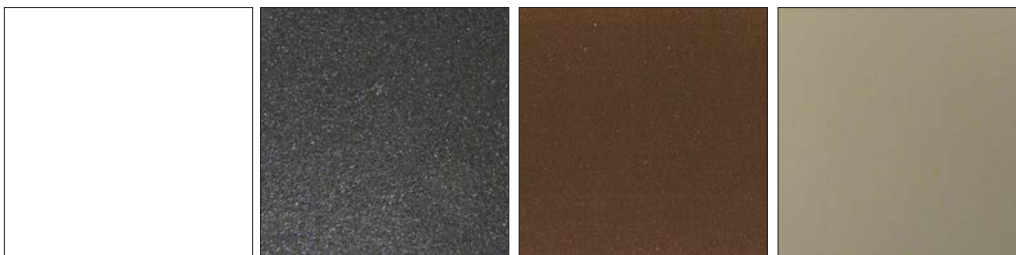
CS0 - Open Roller Exterior Screen



CS4, CS5, CS6 — CASSETTE EXTERIOR SCREEN

- CS4 (4" Cassette): Width 3' – 13', Drop: 3' – 10'
- CS5 (5" Cassette): Width 3' – 20', Drop: 3' – 16'
- CS6 (6" Cassette): Width 6' – 26', Drop: 3' – 16'
 - Extruded Powder Coated Aluminum Cassette in 4 colors, custom colors available
 - Stainless Steel Fittings
 - Easy Motorized Operation at the Push of a Button: Somfy RTS, Somfy Maestria, Moon Radio
 - Optional Gear if power access is not available
 - Wall or Soffit attachment
 - Multiple Fabric Guide Options: cable, pratika rail (CS5 only), standard track, zip track, recessed zip track, rod, or free hanging
 - Popular Fabric Selections:
 - Screen Mesh, Textilene, Phifer, Mermet, Ferrari, Awntex (horizontal seam placement when necessary)
 - Solid Fabric Material: Sunbrella Acrylic (vertical seam placement)
 - Blackout Fabric
 - Clear Vinyl Integration (limited operating temperature range)

STANDARD FRAME COLORS



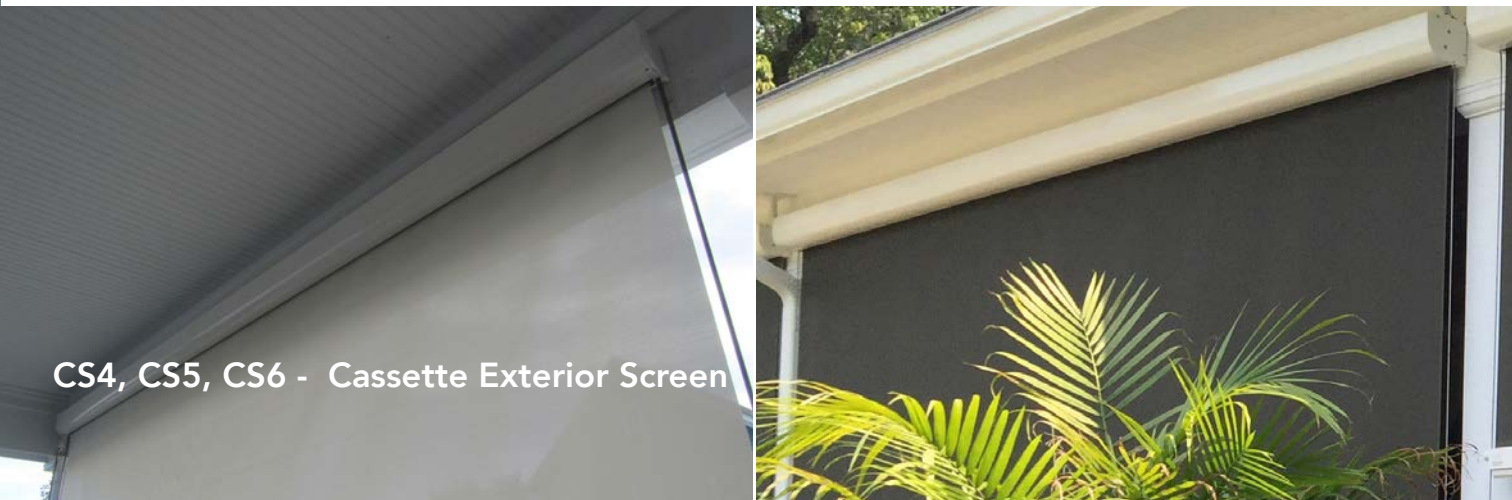
WHITE

CHARCOAL

BROWN

SAND

CS4, CS5, CS6 - Cassette Exterior Screen



FABRIC GUIDANCE:

Cable: Wire top attachment to bracket or cassette guided through bottom hem bar end cap with optional attachments at the bottom



Universal bracket



Wall

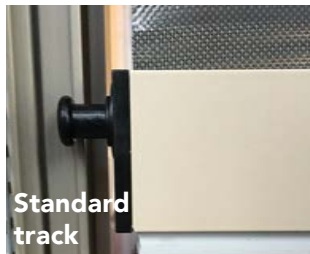


Cable hem bar end cap



Pratika Rails

Standard Track Rail: U shaped track rail with bottom hem bar end cap designed to move up and down inside the track opening

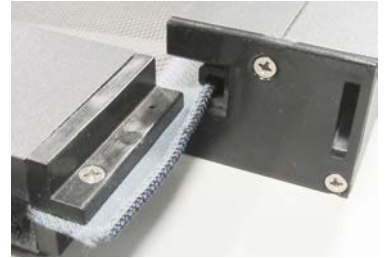


Standard track

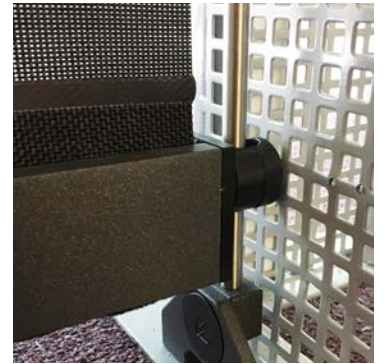
Recessed Zip Track Rails: Excellent for pre-construction or remodeling projects. Fabric with welded side edge zipper offers a captured edge for fabric side retention and bottom hem bar end into a double track setup with insert. Inner and outer tracks are recessed into wall or columns and hidden from view upon final construction and installation.



Zip Track Rails: Fabric with welded side edge zipper offers a captured edge for fabric side retention and bottom hem bar end into a U shaped track with insert.



Rod: Stainless steel solid rod guidance with attachment to bracket or cassette guided through bottom hem bar end cap.



Free Hanging/No guidance: option with external bottom hem bar profile or concealed weight bar in fabric pocket without cable, track rail, or rod guidance assistance.



SPECIFICATION CHART	CS0	CS4	CS5	CS6
Width (1/4" increments)	3' - 26' (32' for CS0 with a split)	3' - 13'	3' - 20'	6' - 26'
Projection	3' - 16'	3' - 10'	3' - 16'	3' - 16'
Clear vinyl windows - width for Group 5A	3' - 16'	3' - 13'	3' - 16'	6' - 16'
Clear vinyl windows - projection for Group 5A	3' - 12'	3' - 8'	3' - 12'	3' - 8'
Cassette options	NONE	4"	5"	6"
Roller tube sizes	70 mm up to 13' 80 mm up to 16' 85 mm up to 20' 110 mm up to 26' 80 mm as split roller up to 32'	70 mm	80 mm up to 16' 85 mm up to 20'	110 mm standard up to 26'
Complete fabric protection	No	Yes	Yes	Yes
Available with guides: cable, rod, zip, recessed and regular track	Yes	Yes	Yes	Yes
Pratika rail	No	No	Yes	No
Hood	Available as an option	Hood not needed with cassette option	Hood not needed with cassette option	Hood not needed with cassette option
Motorized or manual	Available as motor or manual	Available as motor or manual	Available as motor or manual (manual up to 16')	Motorized only
Frame colors	White, Charcoal, Sand, Brown	White, Charcoal, Sand, Brown	White, Charcoal, Sand, Brown	White, Charcoal, Sand, Brown
Custom colors	Please call for availability	Please call for availability	Please call for availability	Please call for availability
Framework warranty	10 year	10 year	10 year	10 year
Soffit mount	Yes	Yes	Yes	Yes
Wall mount	Yes	Yes	Yes	Yes





VERTEX TENSION SCREEN SYSTEM

MADE FOR COMFORT

The Vertex Motorized Tension Screen System elevates zip track fabric guidance on horizontal or vertical solar screen shading to a new level. The sleek 5" cassette housing combined with spring/belt tensioning in the zip track rails is practical and stylish while its purpose is functional and essential for enhanced performance on solar screen protection.

The Vertex has great versatility for different applications. Top mounted setup on an existing sub-structure, a wall or soffit mounting attachment to a structure with front post support in open space areas, as a vertical screen in patio openings or windows, and even for interior skylights where a direct inverted installation of the full cassette and tracks is possible.

Multiple fabric selections are available from screen mesh materials to opaque shading fabrics designed to custom size and cover an area of up to 16' in width with a maximum 16' projection. Additional units for more space coverage can be installed side by side with minimal gap, dual track guidance is also available.



Vertical



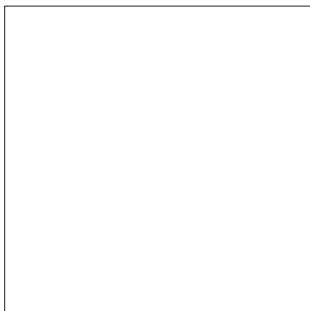
Horizontal (without legs)



Horizontal wall mount
(with legs)

SPECIFICATION CHART	VERTICAL INSTALLATION	HORIZONTAL INSTALLATION WITHOUT LEGS	HORIZONTAL WALL MOUNT INSTALLATION WITH LEGS
Width (1/8" increments)	3' - 16'	3' - 13'	3' - 13'
Projection (1/8" increments)	3' - 16'	3' - 16'	3' - 16'
Clear vinyl windows - width for Group 5A	Yes 3' to 16'	N/A	N/A
Clear vinyl windows - projection for Group 5A	3' - 12'	N/A	N/A
Cassette options	5"	5"	5"
Roller tube size	80 mm	80 mm	80 mm
Complete fabric protection	Yes	Yes	Yes
Hood	Hood not needed with cassette option	Hood not needed with cassette option	Hood not needed with cassette option
Fabric selections	Screen fabrics	Screen fabrics	Screen fabrics
Motorized or manual	Motorized only	Motorized only	Motorized only
Frame colors	White, Brown, Sand, Charcoal	White, Brown, Sand, Charcoal	White, Brown, Sand, Charcoal
Custom colors	N/A	N/A	N/A
Framework warranty	5 years	5 year	5 year

STANDARD FRAME COLORS



WHITE



CHARCOAL



BROWN



SAND

KE USA, Inc.
445 Bellvale Road
Chester, NY 10918
888-387-2765
845-610-1100

KE USA, Inc.
California Division
22220 Opportunity Way, Suite 104
Riverside, CA 92518
844-387-2765

KE USA, Inc.
Commercial Division
38 Pond Lane, Suite B
Middlebury, VT 05753
802-388-7309

www.keoutdoordesign.com/us