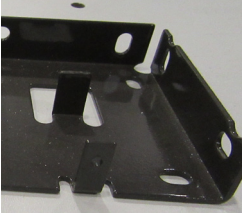
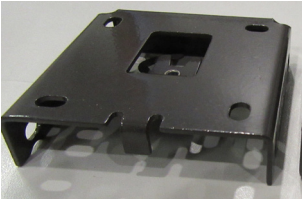
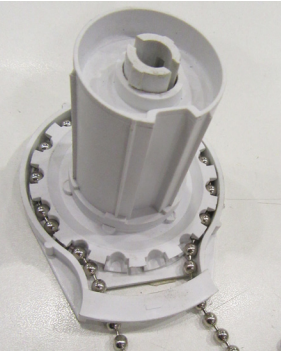


SPECIFICATION CHART	R8500	R8000
Width (1/8" increments)	2'6" - 12'	2' - 10'
Projection	3' - 12'	3' - 9'
Fascia	Yes with 4" or None	Yes with 3" and 4" or None
Fabric selections	Screen fabrics	Screen fabrics
Motorized or manual	Motorized only	Motorized or with manual pull chain
Roller tube size	70 mm	43 mm motorized 51 mm manual
Frame colors	White, Brown	White, Brown
Custom colors	N/A	N/A
Framework warranty	5 year	5 year
Ceiling mount	Yes	Yes
Wall mount	Yes	Yes
Side mount	Yes	Yes

PRODUCT SPECIFICATIONS FOR INTERIOR SCREENS



FASCIA BRACKETS

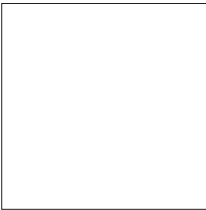


CLUTCH



NON-FASCIA BRACKETS

STANDARD FRAME COLORS



WHITE



BROWN



ENJOY THE OUTDOORS

445 Bellvale Road / Chester, NY 10918
845-610-1100 / www.keoutdoordesign.com/us



ENJOY THE OUTDOORS

INTERIOR SCREENS



INTERIOR SHADE R8500

The Interior Shade R8500 is an attractive, custom-made shading system that combines pleasing aesthetics with advanced technology to increase the privacy of your home and create a comfortable, beautiful living environment. This unit can also help decrease interior fading from damaging UV rays, reduce energy bills, and give you complete control over your home's lighting and privacy.

SPECIFICATIONS*

- Unit Width Range: 2'6" - 12' (1/8" increments)
- Unit Drop: 3' - 12'
- Mounting Options: Wall or Soffit
- Frame Color: White, Brown
- Operation: Motorized Only
- Warranty: 5 Years
- Available without fascia or with 4" fascia



*Subject to change without prior notice



INTERIOR SHADE R8000

The Interior Shade R8000 is an interior screen that can be mounted in a "pocket" or on a wall with an optional fascia to cover the fabric roller. Great choice for condos and offices where an exterior product is not allowed. Whether for a home, restaurant, or office building, the R8000 is a smart economical choice to control sun-glare, heat-gain or privacy.

SPECIFICATIONS*

- Unit Width Range: 2' - 10' (1/8" increments)
- Unit Drop: 3' - 9'
- Mounting Options: Wall or Soffit
- Frame Color: White, Brown
- Operation: Motorized or Manual Pull Chain
- Warranty: 5 Years
- Available without fascia or with 3" or 4" fascia



*Subject to change without prior notice



KE
ENJOY THE OUTDOORS

**BELLA
PLUS**

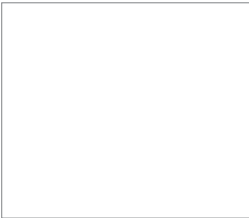
THE BENEFITS OF THE BELLA PLUS FULL/SEMI CASSETTE PLUS HOOD AND TRAY SYSTEM

- The Full Cassette features a state of the art hood & tray fabric-protection system of maintenance free aluminum with a powder coated finish in your choice of designer colors.
- The Full Cassette design also conceals the component mechanisms and fabric when not in use so your home maintains its beautiful appearance without unsightly frames or hanging fabric to disturb the look of your property's façade when the awning is not in use.
- The "Hood & Tray" design denies bird's access to the torsion bar so they cannot build a nest under the awning's protective cover, as in traditional retractable awning designs.
- The "Full Cassette" keeps the arms & frame of the awning protected from dust and debris when fully retracted.
- The Bella mounts flush against the wall of your home, for a sleek aesthetically appearance when retracted to complement and not detract from existing architectural design.
- Extruded aluminum "hood & tray" entirely surrounds your awning fabric to completely protect your expensive fabric from the damaging effects of sun, rain, snow, ice and wildlife when your awning is retracted and not in use.
- The "internal tray" supports the roller tube, allowing the Bella Plus to have widths up to 26' 0" WITHOUT the need for center support brackets that damage fabric with friction and abrasion.
- Tension Sensing Motor: The hood and tray design allows the usage of Somfy's Torque Sensing Motor Technology. The front rail of the full cassette model will continue to close flush against the cassette housing to prevent any gaps as a result of possible minor fabric stretching. The complete closure will fully retract the awning into the protective case system keeping your fabric, retractable armature, framework and motor protected from damage due to rain, snow, ice, dust, dirt, squirrels and bird's nests.
- LED lights are available on all projections.

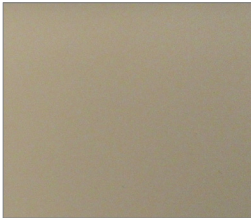
TECHNICAL	
Width	7' 4" - 26' (1/4" increments)
Projections	5'3" - 14'3" - (belt arms)
Operation	Motorized or Manual
Cassette Backplate	Optional (recommended on roof and soffit mounting applications)
Drop Valance	Full and Semi-Cassette (max size range 19'8" x 11'9")
Warranty	Limited Lifetime Frame Warranty
Frame Colors	White, Sand, Brown, Charcoal, Jet Black (custom color on projections up to 10' 2")
Arms	New belt arm reduces friction against metal for better performance

OPTIONAL

The Bella Plus is available in 5 distinct standard colors to complement the primary color of your home and blend in unison with secondary colors:



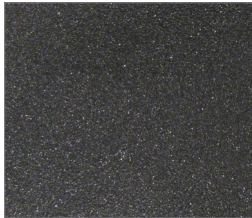
White



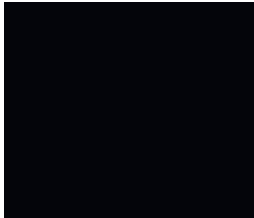
Sand



Brown



Charcoal



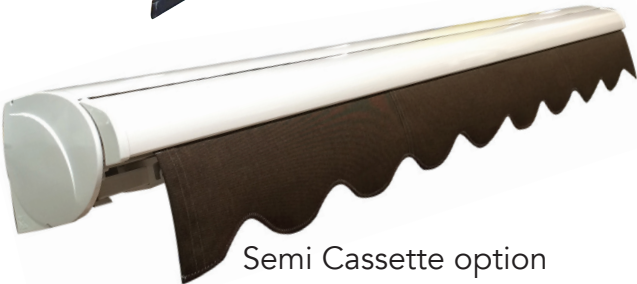
Jet Black



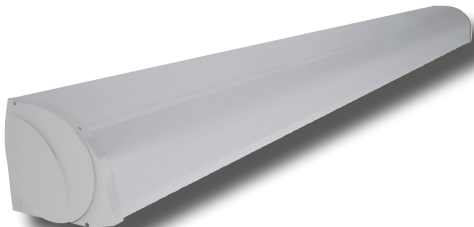
Semi Cassette with drop valance option



Full Cassette Drop Valance



Semi Cassette option



Full Cassette option

	Open full cassette option		Closed full cassette option		Belt Arms available on all projections
---	---------------------------	---	-----------------------------	---	--

Exterior screens are practical and functionally designed to control up to 99% of the sun's harmful UV rays from solar radiation that can cause skin damage, negative vision and fatigue effects from glare, and damage to drapes, furnishings, and carpeting.

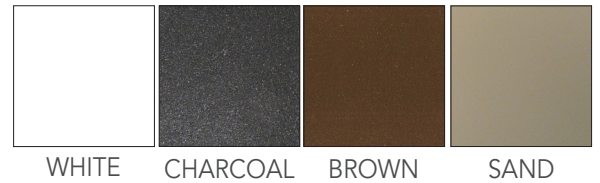
By enhancing the aesthetics and décor both from the interior and exterior perspective, optical fabric properties also control visible light transmission for glare reduction and daytime privacy.

CS0 — OPEN ROLLER EXTERIOR SCREEN

- CS0 - Width 3' – 26', Drop: 3' – 16'
 - Variable Openness Screen Mesh: Textilene, Phifer, Mermet, Ferrari, Awntex- (horizontal seam placement when necessary)
 - Solid Fabric Material: Sunbrella Solution Dyed Acrylic (vertical seam placement)
 - Blackout Fabric
 - Clear Vinyl Integration (limited operating temperature range)

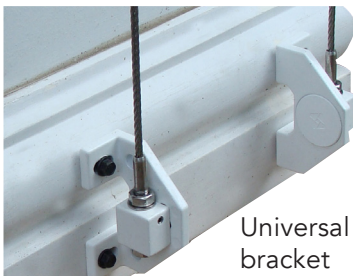


STANDARD FRAME COLORS

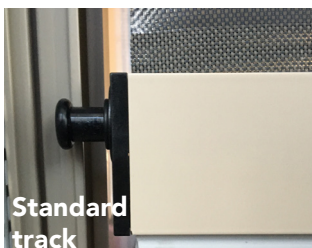


Fabric Guidance Options

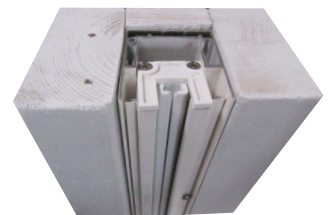
Cable: Wire top attachment to bracket or cassette guided through bottom hem bar end cap with optional zip retainer attachments at the bottom



Standard Track Rail: U shaped track rail with bottom hem bar end cap with optional zip retainer designed to move up and down inside the track opening



Recessed Zip Track Rails: Excellent for pre-construction or remodeling projects. Fabric with welded side edge zipper offers a captured edge for fabric side retention and bottom hem bar end into a double track setup with insert. Inner and outer tracks are recessed into wall or columns and hidden from view upon final construction and installation.



Extruded powder coated aluminum profiles and corrosion resistant stainless steel components are available as an open roller (CS0) or as an enclosed box based on width into a 4", 5", or 6" cassette application (CS4, CS5, CS6). Standard colors include white, sand, brown, and charcoal or upgraded custom colors are also available.

Multiple fabric guidance options on the bottom hem are available including cable, standard track rail, zip track rail, recessed zip track rails, rod or free hanging.

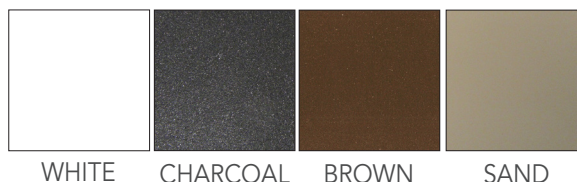
Custom width and drop size range based on product specifications and operation.

CS4, CS5, CS6 — CASSETTE EXTERIOR SCREEN

- CS4 (4" Cassette): Width 3' – 13', Drop: 3' – 16'
- CS5 (5" Cassette): Width 3' – 20', Drop: 3' – 16'
- CS6 (6" Cassette): Width 6' – 26', Drop: 3' – 16'
 - Extruded Powder Coated Aluminum Cassette in 4 colors, custom colors available
 - Stainless Fittings
 - Easy Motorized Operation at the Push of a Button: Somfy RTS, Somfy Maestria, Moon RTS
 - Optional Gear if power access is not available
 - Wall or Soffit attachment
 - Multiple Fabric Guide Options: cable, standard track, zip track, recessed zip track, rod, Pratika rail (CS5 only) or free hanging
 - Popular Fabric Selections:
 - Screen Mesh, Textilene, Phifer, Mermet, Ferrari, Awntex (horizontal seam placement when necessary)
 - Solid Fabric Material: Sunbrella Acrylic (vertical seam placement)
 - Blackout Fabric
 - Clear Vinyl Integration (limited operating temperature range)

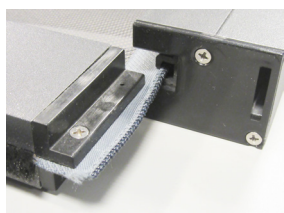


STANDARD FRAME COLORS

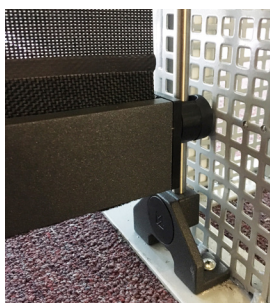


Additional Fabric Guidance Options

Zip Track Rails: Fabric with welded side edge zipper offers a captured edge for fabric side retention and bottom hem bar end into a U shaped track with insert.



Rod: Stainless steel solid rod guidance with attachment to bracket or cassette guided through bottom hem bar end cap.



Free Hanging/No guidance: option with external bottom hem bar profile or concealed weight bar in fabric pocket without cable, track rail, or rod guidance assistance.





KE

ENJOY THE OUTDOORS

DOMINA

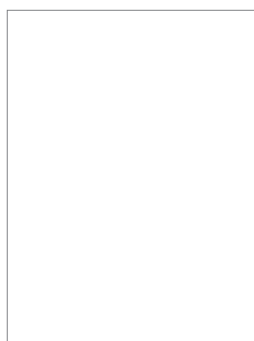
Domina is our newest full cassette retractable awning model. The lighter weight design combined with a reduced profile height enables wall, soffit, or roof mounted applications with a sleek modern appearance and advanced operational technology.

The stylish full cassette enclosure offers complete fabric and hardware protection against the environmental elements.

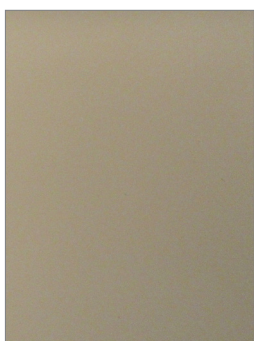


TECHNICAL	
Width	6' 5" - 20' (1/4" increments)
Full Cassette	Cassette encases your fabric protecting it from elements
Projections	Belt arm type - 5'3", 7'8", 8'6", 10'2", (up to 20' widths) 11'9" (up to 16' width)
Operation	Motorized or Manual
Roller Tube	80mm, Galvanized Steel
Mounting Options	Soffit, Wall, Roof
Warranty	Limited Lifetime Frame Warranty
Frame Colors	White, Sand, Brown, Charcoal, Jet Black

The Domina is available in 5 distinct standard colors to complement the primary color of your home and blend in unison with secondary colors:



White



Sand



Brown



Charcoal



Jet Black

THE BENEFITS OF DOMINA FULL CASSETTE

- A sophisticated awning system with classical design integrates into all types of architectural structures with full cassette protection.
- Rotational pitch adjustment from 0 to 80 degrees of the cassette housing allows for optimal and convenient adjustment.
- Belt arm technology dramatically increases cycle count lifespan and durability of the system
- Easy, time saving installation with lighter weight design, variable mounting plate size option and reduced profile height.
- LED lights are available on all projections.





KE
ENJOY THE OUTDOORS

**ELITE
PLUS**

Elite Plus is our most versatile retractable awning; an adjustable retractable awning system that allows you to fine tune your late day sun protection.

The optional "R-Pitch" adjustable shoulder with its patented swivel wrist allows you to drop each corner independently with a simple eyelet and manual hand crank system.

Optional drop valance available up to 24' widths and projection up to 11' 9".

THE BENEFITS OF AN ELITE PLUS PATIO COVER

- Unique cross-arm functionality available on a minimum of 3' 8" width units
- Up to 24' wide drop valance available on projections up to 11' 9"
- Overall pitch adjustment up to 50° for complete coverage
- Built-in level on front bar for R-pitch option for precision adjustments
- New belt arms extend the life of your awning
- Over 500 fabric choices to choose from
- Advanced manufacturing technology and skilled craftsmanship provide customers the highest quality products available
- LED lights are available on all projections.

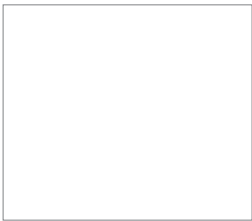
The Elite Plus is a practical and premium awning that is designed to last for a lifetime.

Superb durability and maintenance-free operation, Elite Plus offers the finest component features available in the industry.

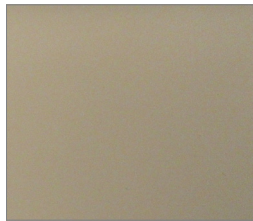
TECHNICAL	
Width	3' 8" - 46' (1/4" increments)
Projections	5'3", 7'8", 8'6", 10'2", 11'9", 13'6"
Operation	Motorized or manual gear with hand crank (no torque sensing motors)
Torsion bar	40mm x 40mm, Galvanized Steel - Polyester Powder Coated
Mounting options	Wall, soffit, or roof (roof not recommended with R-pitch option)
Warranty	Limited Lifetime Frame Warranty
Roller Tube	80mm, Galvanized Steel
Frame Colors	White, Sand, Brown, Charcoal, Jet Black, and Custom Color
Hood	Option protects the fabric when awning is retracted. Hood option is recommended to help prevent water damage to motor which is not covered under warranty guidelines.

OPTIONAL

The Elite Plus is available in 5 distinct standard colors to complement the primary colors of your home and blend in unison with secondary colors:



White



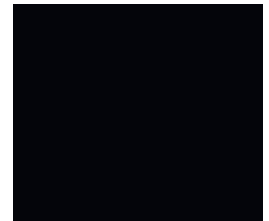
Sand



Brown



Charcoal



Jet Black



R-pitch



R-pitch benefits



Cross Arms



Elite Plus fully retracted



Elite Plus with drop screen

PINNACLE ONE

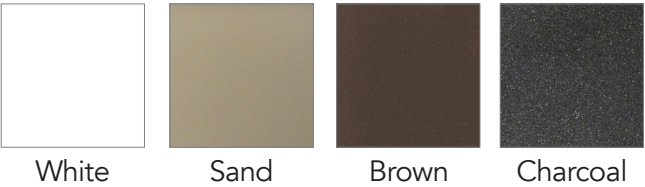
The Pinnacle One is a retractable shading system that can be used individually or combined with multiple units. The Pinnacle One also features a cassette style housing that incorporates a brush to prevent debris from rolling up with the fabric into the unit.

Engineered with its own supporting frame structure allowing for mounting without the need for a pergola or roof.



THE BENEFITS OF PINNACLE ONE

- Powder coated aluminum components are corrosion resistant
- Minimal mounting footprint require
- Tensioned spring/cord system ensures taut fabric performance
- Single, double, or triple units are available
- Optional front drop down screens available
- Front legs available in 8’ and 12’ heights



TECHNICAL	
Width	3’ - 16’ (per module) Two or three units can be coupled max. 48’ width
Projections	3’ - 13’ (3’ - 16’ with acrylic fabric)
Operation	Motorized
Mounting options	Wall, Roof
Warranty	5 Year Frame Warranty
Roller Tube	80mm, Galvanized Steel
Frame Work	White, Sand, Brown, Charcoal
Drop Screen	Yes, available with the Pinnacle One



PINNACLE TWO

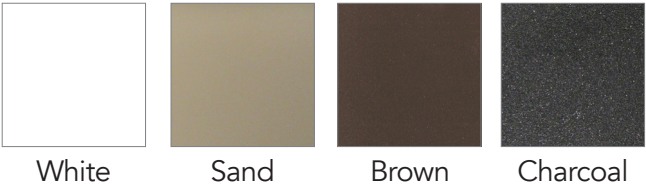
The Pinnacle Two can be mounted on an existing unit or pergola and includes the same engineering features of the Pinnacle One without the front legs, for easy mounting to an existing structure.

Engineered without the front legs needs an existing structure for mounting.



THE BENEFITS OF PINNACLE TWO

- Specially designed self-cleaning debris brush
- Two different mounting brackets covers all applications
- Semi-cassette housing provides full fabric protection when retracted
- Single or double units are available



TECHNICAL	
Width	3' - 16' (per module) two or three units can be coupled max. 48' width
Projections	3' - 13' (3' - 16' with acrylic fabric)
Operation	Motorized
Mounting options	Roof or on top of any existing structure
Warranty	5 Year Frame Warranty
Roller Tube	80mm, Galvanized Steel
Frame Work	White, Sand, Brown, Charcoal
Drop Screen	No, not available with the Pinnacle Two



Pinnacle Two



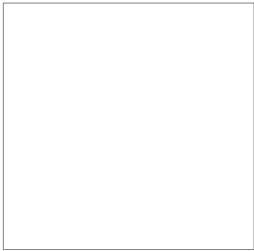
The Regal is our most competitive custom made awning where style meets value. Adding charm and value, the Regal gracefully compliments the exterior of any home.

THE BENEFITS OF REGAL RETRACTABLE PATIO SHADE

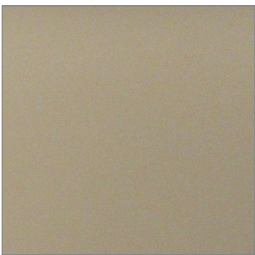
- Adds lasting value for any home
- Widths up to 23' and projections 5' 3", 7' 8", 8' 6", 10' 2", and 11' 2"
- Easy to operate motorized or manual gear option
- Over 500 fabric choices to choose from
- Teflon coated bushings with stainless steel pins keep unit quiet and maintenance free
- Aluminum hood available and recommended
- Designed for heavy-duty performance at a light duty price

TECHNICAL	
Width	6' 1" - 23' (1/4" increments)
Projections	5' 3", 7' 8", 8' 6", 10' 2", 11' 2"
Operation	Mortorized or manual gear with hand crank (no torque sensing motors)
Torsion bar	40mm x 40mm, Galvanized Steel - Polyester Powder Coated
Mounting options	Wall, soffit, or roof
Warranty	8 Year Frame Warranty
Roller Tube	70mm, Galvanized Steel
Arm Construction	Extruded aluminum with cast aluminum components
Unit Profile with hood	11" high x 12" deep
Unit Profile without hood	8-1/4" high x 9-1/8" deep

The Regal is available in 2 standard colors to complement the primary color of your home and blend in unison with secondary colors:



White



Sand



SPACE/SPACE WALL



SPACE WALL

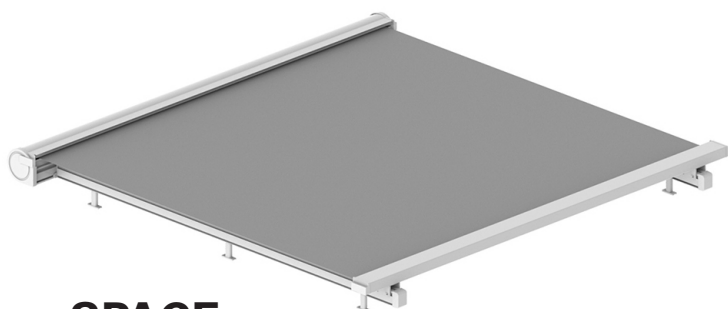
Space Wall is an elegant and modern tension rollup shade system designed to mount with bracket attachment to wall, soffit, or roof applications to shade open areas with supporting leg posts.



SPACE

Space is an elegant and modern tension rollup shade system designed to mount with bracket attachment onto pre-existing substructures such as verandas and pergolas.

SPACE/SPACE WALL

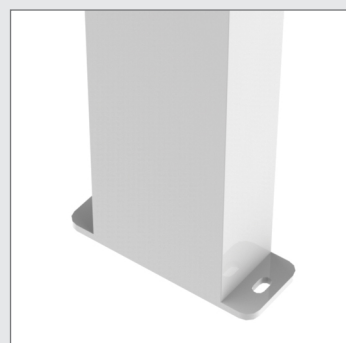
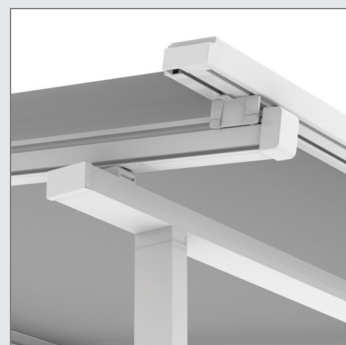


SPACE



SPACE WALL

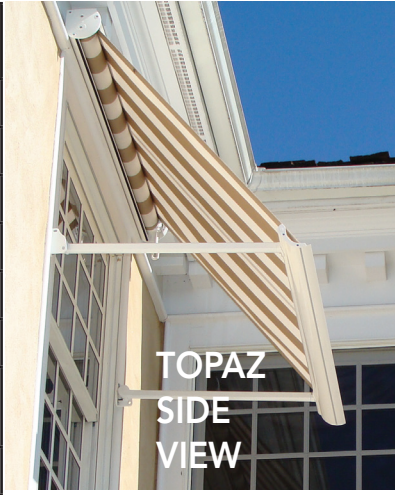
SPECIFICATION CHART	TENSION SHADE SYSTEMS SPACE	TENSION SHADE SYSTEMS SPACE WALL
Width (1/4" increments)	5' - 23'	5' - 23'
Projection	5' - 23'	5' - 18'
Arm type (belt or cable)	Gas pistons guide rails	Gas pistons guide rails
Cassette options	Full	Full
Hood	N/A	N/A
Drop valance option	N/A	N/A
Fabric selections	Acrylic fabrics	Acrylic fabrics
Complete fabric protection	Yes	Yes
Motorized or manual	Motor only	Motor only
Roller tube size	80	80
Frame colors	White, Charcoal	White, Charcoal
Custom colors	N/A	N/A
Framework warranty	*Limited Lifetime Warranty *(gas pistons 2 year warranty)	*Limited Lifetime Warranty *(gas pistons 2 year warranty)
Roof mount	N/A	Yes used with headerboard
Soffit mount	N/A	Yes
Wall mount	N/A	Yes
On top of any existing structure or Pergolas	Yes	N/A



This cassette retractable drop arm window awning in a cassette is perfect for windows up to 16' wide. The spring loaded arm tension guarantees a taut fabric cover that can be dropped to a 160 degree position just short of a totally vertical application while allowing some light to still transmit in from the open sides of the awning. The sleek design of the front rail fits flush against the cassette housing that contains the fabric roller for a more complete finished and compact appearance when the unit is retracted.



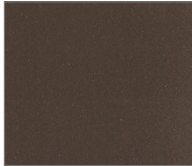
TECHNICAL	
Width	3' - 16' (1/4" increments)
Projections	2'2", 2'7", 3'3", 3'11", 4'7", 5'3", 5'11"
Operation	Motorized or manual
Mounting options	Wall, Soffit
Warranty	5 year warranty
Roller Tube	70mm, Galvanized Steel
Frame Colors	White, Brown, Sand (custom colors not available)
Drop valance (optional)	N/A



White



Sand

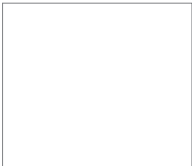


Brown

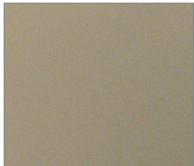
This open roller drop arm window awning has a wider width size range up to 40'. With additional arm placements for support, the unit can cover wider window areas where attachment is possible for maximizing solar protection. The spring loaded arm tension guarantees a taut fabric cover that can be dropped to a 160 degree position just short of a totally vertical application while allowing some light to still transmit in from the open sides of the awning. An optional hood with side covers is available for top protection on the open fabric roller for a beautiful finished appearance.



TECHNICAL	
Width	3' - 40' (1/4" increments)
Projections	2'2", 2'7", 3'3", 3'11", 4'7", 5'3", 5'11"
Operation	Motorized or manual
Mounting options	Wall, Soffit
Warranty	5 year warranty
Roller Tube	70mm, Galvanized Steel
Frame Colors	White, Brown, Sand (custom colors not available)
Drop valance (optional)	N/A



White



Sand



Brown





The Triumph is a large projection model for medium to large spaces capable of covering significant square footage as a durable shading addition to any home or business. Custom built for your home so you can choose the features that suit your needs.

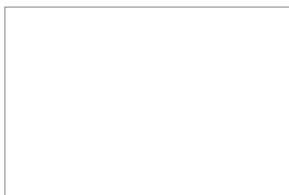
Optional drop valance available up to 24' widths and projection up to 15' 1".

THE BENEFITS OF TRIUMPH RETRACTABLE SHADE COVER

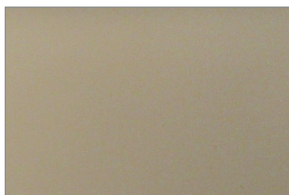
- At 15'11" the Triumph is our largest projecting lateral arm awning
- Heavy duty arm profiles and shoulder configuration
- Ability to create up to 480 square feet of shade when fully retracted
- Unrivaled 50mm torsion bar and 85mm roller tube
- Over 500 fabric choices to choose from
- Drop valance available up to 24' width and up to 15' 1" projection
- Teflon coated bushings with stainless steel pins keep unit quiet and maintenance free
- Aluminum hood available and recommended for motor and fabric protection

TECHNICAL	
Width	15' 9" - 30' (1/4" increments)
Projections	13' 5", 14' 3", 15' 1", 15' 11"
Operation	Motorized only
Torsion bar	50mm x 50mm, Galvanized Steel - Polyester Powder Coated
Mounting options	Wall, soffit (upcharge), or roof
Warranty	Limited Lifetime Frame Warranty
Roller Tube	85mm, Galvanized Steel
Frame Colors	White, Sand, Charcoal
Drop valance (optional)	Available up to 24" widths on projections up to 15' 1"
Unit Profile with hood	12" high x 12" deep
Unit Profile without hood	11" high x 10" deep

The Triumph is available in 3 standard colors to complement the primary color of your home and blend in unison with secondary colors:



White



Sand



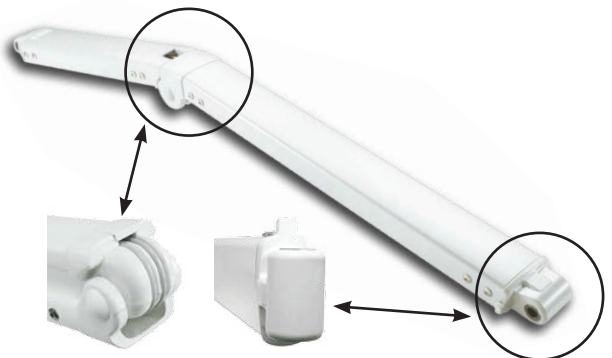
Charcoal



Wall mount



Drop valance front bar



TRIUMPH ROOF MOUNT



TRIUMPH RETRACTED



VERTEX TENSION SCREEN SYSTEM

MADE FOR COMFORT

The Vertex Tension Screen System has a different approach on shading for your home or business. The sleek design is practical and stylish while its purpose is functional and essential. Vertex can be mounted above or below an existing glass roof or pergola, or they can be mounted to a wall supported with legs, or in a vertical position.

Vertex Tension Screen System can cover glass roofs or conservatories, or just about anything you need covered. Have complete shade for your large deck or patio with the simple ease of pushing a button.

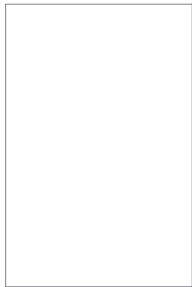
Our tension screen system is custom made to fit your needs with the latest new technology that always keep you comfortable outdoors.



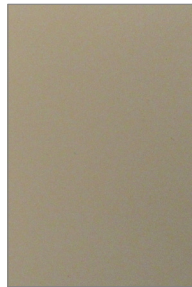
The Vertex primary applications: homes, businesses, restaurants.

TECHNICAL	
Orientation	Horizontal (optional front posts) or Vertical
Width	Vertical: 3' 0" - 16' 0" (1/8" increments) Horizontal: 3' 0" - 13' 0" (1/8" increments)
Projections	3' 0" - 16' 0" (zip guides only)
Operation	Motorized
Mounting	Top Mount Pergola or Wall, Soffit, or Roof with front legs
Warranty	5 year Framework Warranty
Frame Colors	White, Sand, Brown, Charcoal
Fabrics	Screen Mesh Fabrics

The Vertex is available in 4 distinct standard colors to complement the primary color of your home and blend in unison with secondary colors:



White



Sand



Brown



Charcoal

THE BENEFITS OF VERTEX TENSION SCREEN SYSTEM

- Tensioned Shade with horizontal pergola or vertical tension screen system configurations
- Better Protection with zip track fabric guidance under tension for superior solar and wind protection and control
- Natural Safeguards: Keep the bugs out and other dirt and debris
- Square Cassette Hood design to house the fabric roller and zip track fabric guidance under preset spring and belt tensioning for more protection against the elements.



Vertical



Horizontal (without legs)



Horizontal (with legs)