



ENJOY THE OUTDOORS

2020 PRODUCT NEWS

Stefano Biasi and Yaroslav Ivanchuk

SPINA ELASTICA ϕ 5x12 UNI 6873

PERNO m/m 84 DIS M/008



PRODUCT NEWS WE WILL TALK ABOUT:

AWNING

- BELT ARMS ON ALL AWNINGS
- PRELED ARMS
- DOMINA 32" INSTALL BRACKET
- NO MDV
- LIMITS ON 14'3" PROJECTION ON BELLA PLUS
- NEW A100 PROFILE ON SPACE WALL
- PINNACLE CORD REPLACEMENT

GENNIUS

- ISOLA 2 AND KEDRY PLUS LIGHT OPTION
- NEW INTERMEDIA POST/GABLE PROFILE

SCREEN

- VERTEX BELT UPDATE
- VERTEX LARGE HEM BAR
- PRATIKA RAIL AND WINDBREAKERS
- SCREEN NEW CABLE ATTACHMENT
- 110mm ROLLERTUBE

YOUR OPINION IS IMPORTANT TO US

- SLIM LIGHT FABRIC CROSSBEAM PROFILE
- SLIDING GLASS DOOR
- CS5 ECO

PRODUCT NEWS WE WILL TALK ABOUT:

AWNING

- BELT ARMS ON ALL AWNINGS
- PRELED ARMS
- DOMINA 32" INSTALL BRACKET
- NO MDV
- LIMITS ON 14'3" PROJECTION ON BELLA PLUS
- NEW A100 PROFILE ON SPACE WALL
- PINNACLE CORD REPLACEMENT

GENNIUS

- ISOLA 2 AND KEDRY PLUS LIGHT OPTION
- NEW INTERMEDIA POST/GABLE PROFILE

SCREEN

- VERTEX BELT UPDATE
- VERTEX LARGE HEM BAR
- PRATIKA RAIL AND WINDBREAKERS
- SCREEN NEW CABLE ATTACHMENT
- 110mm ROLLERTUBE

YOUR OPINION IS IMPORTANT TO US

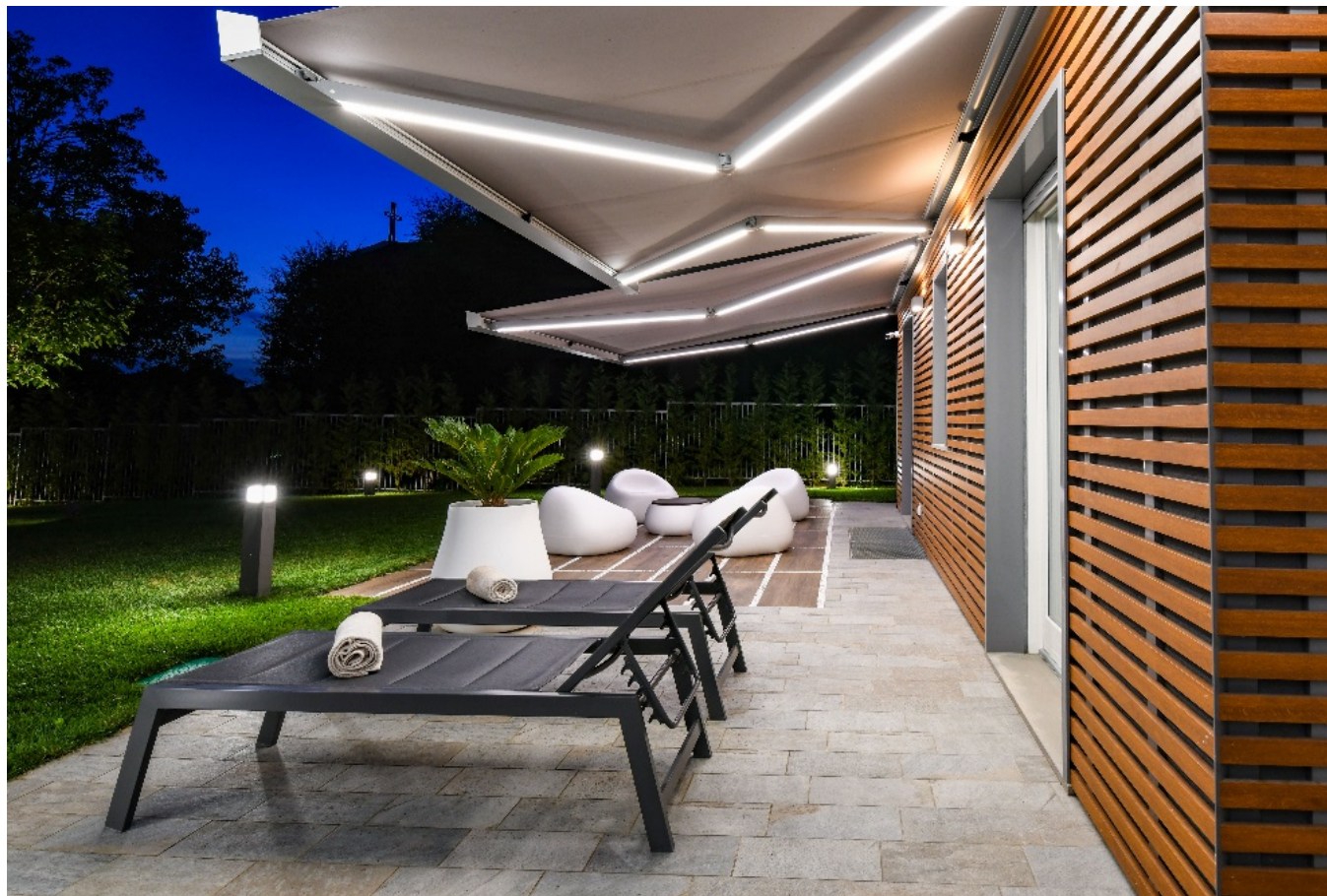
- SLIM LIGHT FABRIC CROSSBEAM PROFILE
- SLIDING GLASS DOOR
- CS5 ECO

BELT ARMS ON ALL AWNINGS



- AVAILABLE ON ALL AWNINGS (EXCEPT REGAL) BELT IMPROVES THE OVERALL AESTHETICS OF THE AWNING
- NO MORE WEAR MARKS (OR MISSING PAINT) ON ELBOWS LIKE WITH CABLES OR CHAIN
- WITH TEST VERIFIED 30000 CYCLES THE JOINER WILL BREAK SOONER THAN THE BELT
- WHITE AND BLACK BELT COLORS AVAILABLE (WILL HAVE BLACK BELT ON CUSTOM COLOR ARMS)

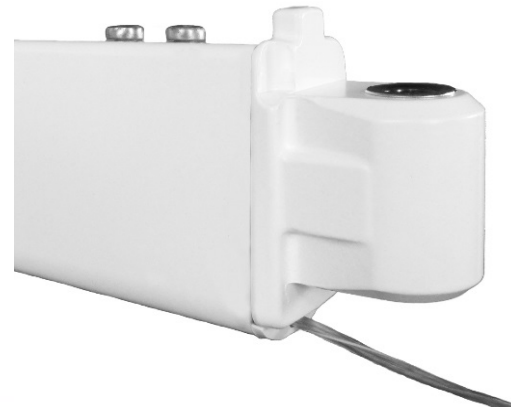
PRELED ARMS



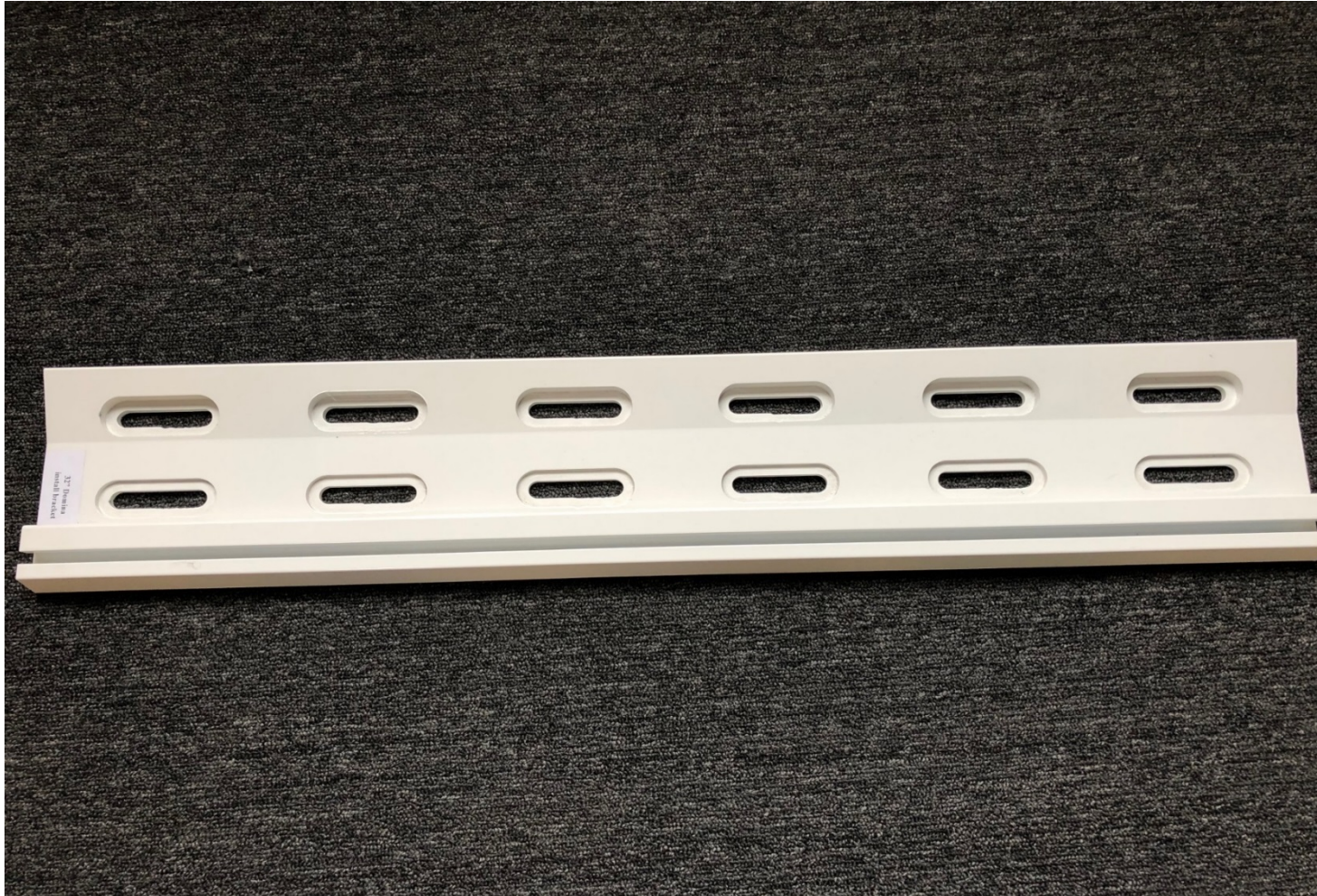
PRELED ARMS

FEATURES:

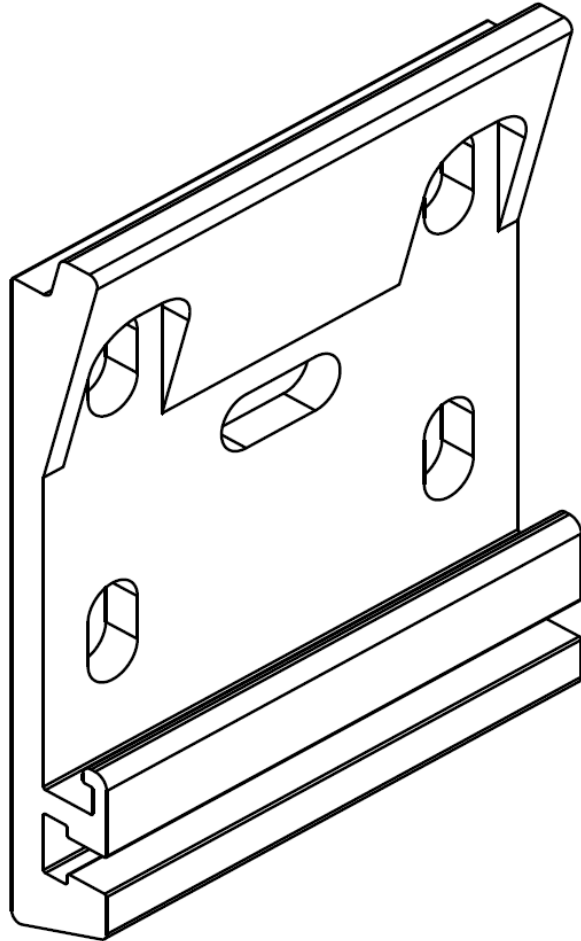
- LED strip low voltage (24V) light with transformer
- Could be dimmable
- Available on Belt arms with LED strip integrated into arm extrusions
- Available on Bella Plus, Domina and Elite Plus awnings
- Could be controlled with on/off wall switch or remote



DOMINA 32" INSTALL BRACKET



DOMINA 32" INSTALL BRACKET



- We did introduce an oversized 32" install bracket for Domina cassette unit (in addition to standard 8" bracket)
- On a frame house we do recommend two methods of installation:
 - with oversized 32" brackets cut to size required to catch 2 studs (4 lag bolts total) or
 - Header board cut to the unit size and framed – in this case you can use standard 8" install brackets

OTHER AWNING NEWS

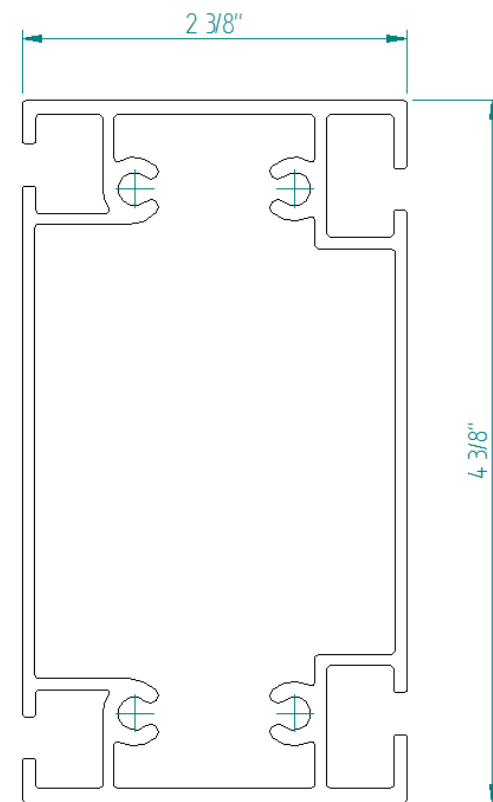
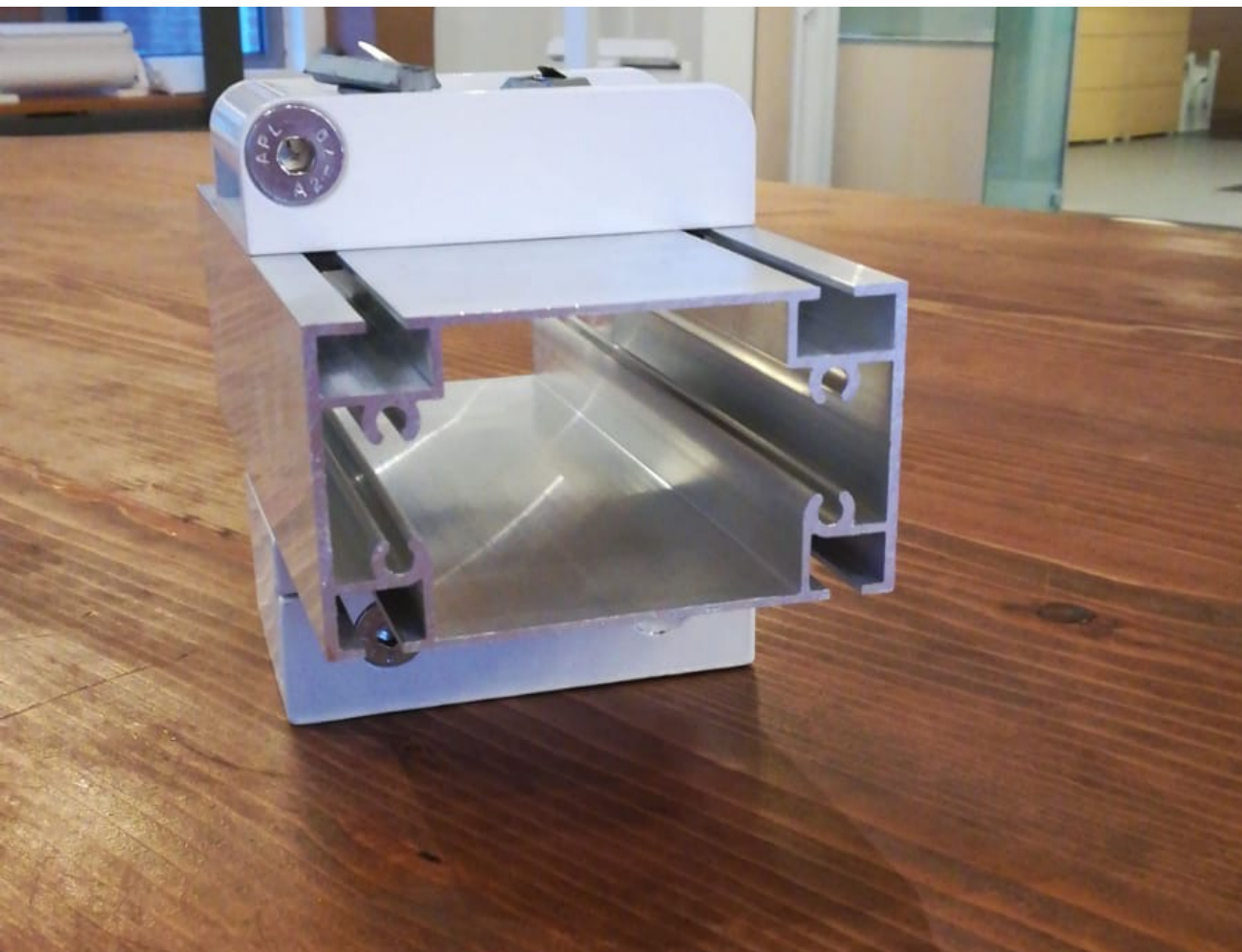


- We did limit 14' 3" arm projection on Bella Plus to units up to 20' width in order to have wind class rating 1 according with UNI EN 13561
- We did eliminate motorized DV on Bella Plus, Triumph and Elite Plus awnings

NEW A100 PROFILE ON SPACE WALL



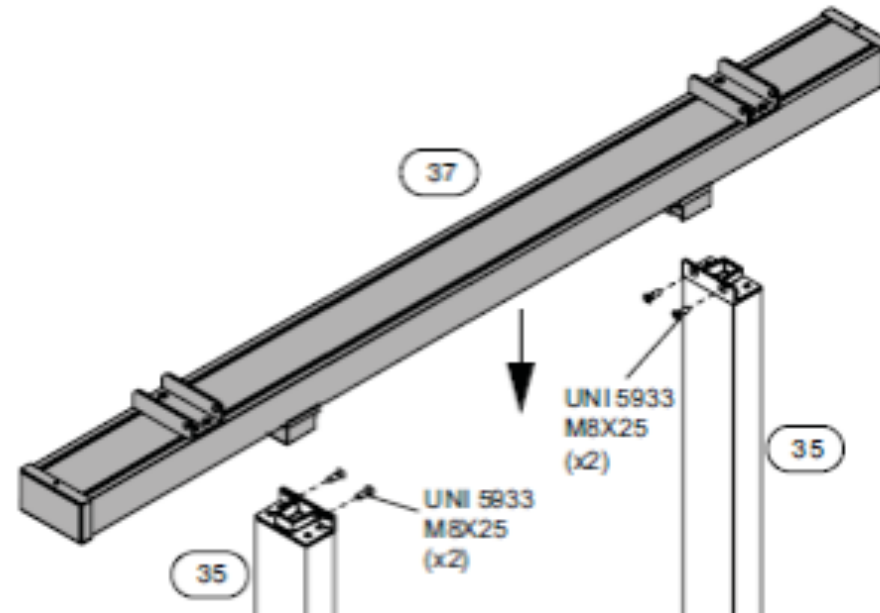
NEW A100 PROFILE ON SPACE WALL



NEW A100 PROFILE ON SPACE WALL

FEATURES:

- This new profile will allow for easy installation and adjusting of guide rails position on a field
- No need for preinstalled rivet nuts, in case of field adjustment no extra holes in profiles
- Coming soon



PINNACLE CORD REPLACEMENT

Cord replacement procedure:

- When replacing the cord it has to have 3 full wraps on a pulley when the unit is closed
- The tensioning of the springs has to be done with unit about $\frac{3}{4}$ way open – best indicator – the diameter of cord on a pulley equal to fabric diameter
- If done correctly the spring tension will increase from this point
- If the tensioning done some other way you have a risk of loosing the tensioning at $\frac{3}{4}$ way and the cord can jump off the pulleys

PRODUCT NEWS WE WILL TALK ABOUT:

AWNING

- BELT ARMS ON ALL AWNINGS
- PRELED ARMS
- DOMINA 32" INSTALL BRACKET
- NO MDV
- LIMITS ON 14'3" PROJECTION ON BELLA PLUS
- NEW A100 PROFILE ON SPACE WALL
- PINNACLE CORD REPLACEMENT

GENNIUS

- ISOLA 2 AND KEDRY PLUS LIGHT OPTION
- NEW INTERMEDIA POST/GABLE PROFILE

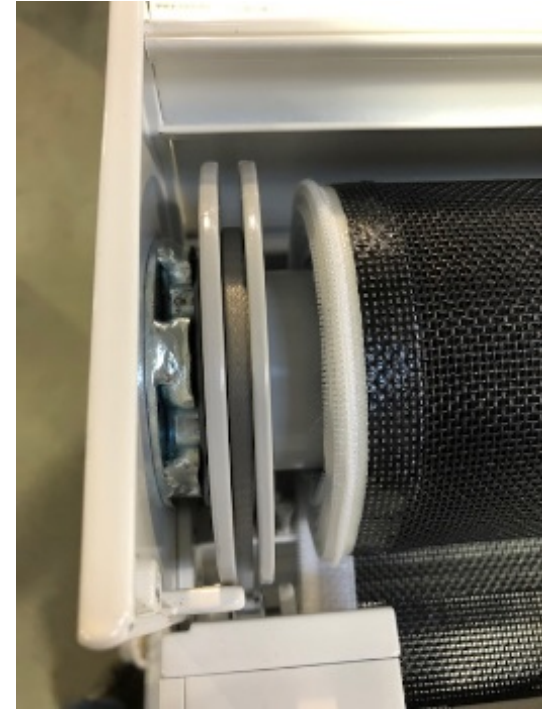
SCREEN

- VERTEX BELT UPDATE
- VERTEX LARGE HEM BAR
- PRATIKA RAIL AND WINDBREAKERS
- SCREEN NEW CABLE ATTACHMENT
- 110mm ROLLERTUBE

YOUR OPINION IS IMPORTANT TO US

- SLIM LIGHT FABRIC CROSSBEAM PROFILE
- SLIDING GLASS DOOR
- CS5 ECO

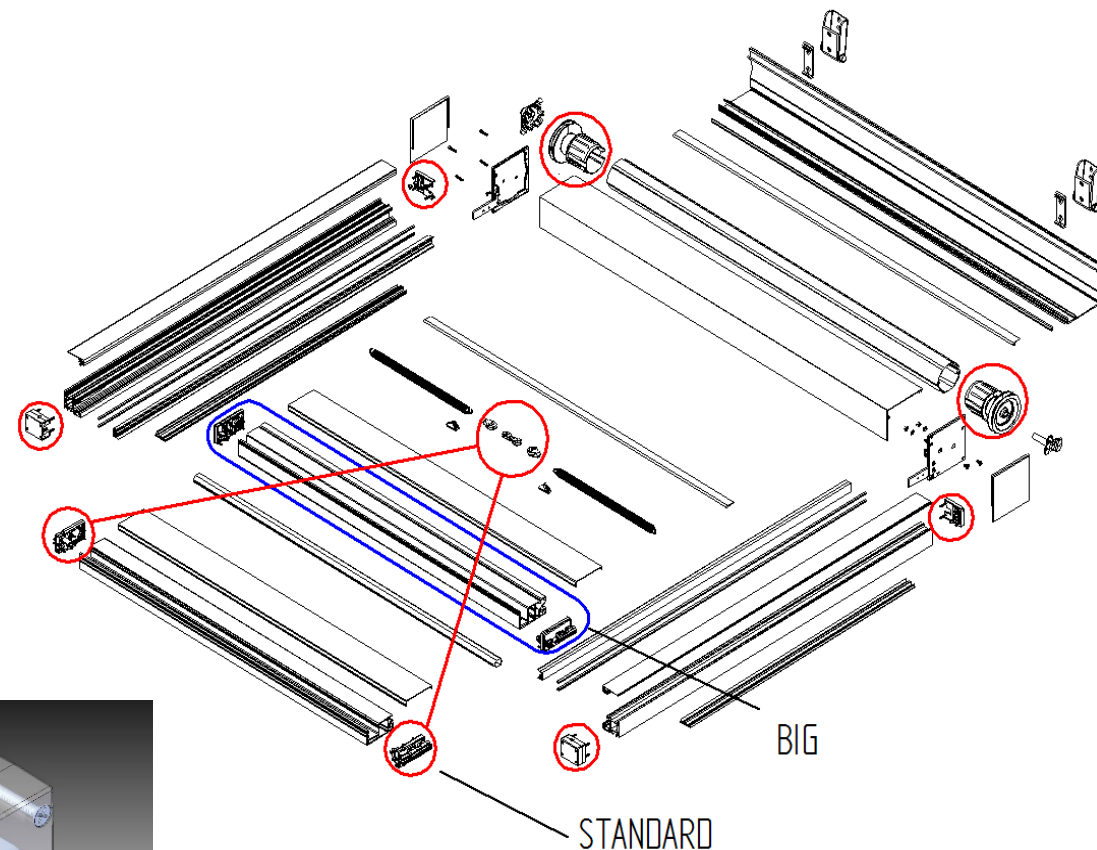
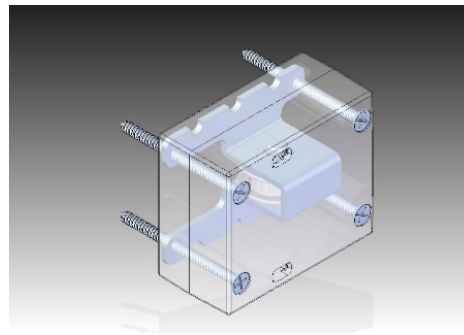
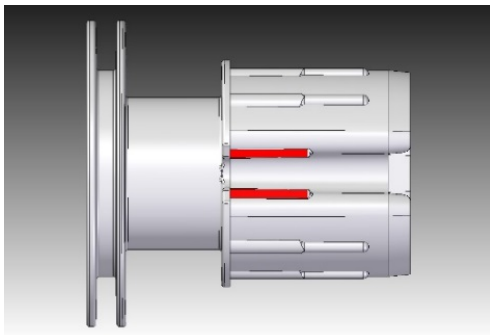
VERTEX BELT UPDATE



VERTEX BELT UPDATE

FEATURES:

- New parts include roller tube gudgeons, rail end caps, hem bar end caps and pulleys
- With belt introduction we did eliminate problems with fabric tensioning and cord placement on a pulley



VERTEX BELT UPDATE

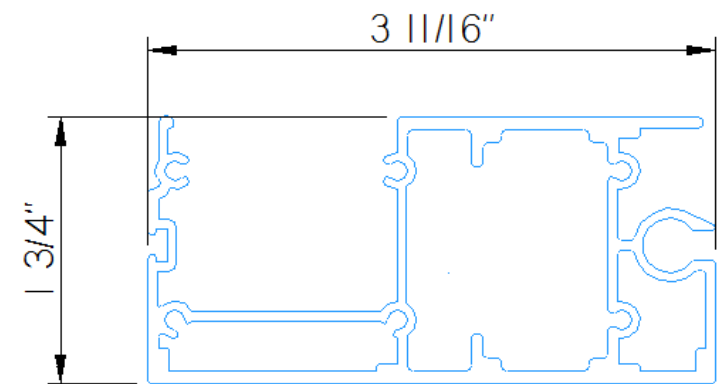
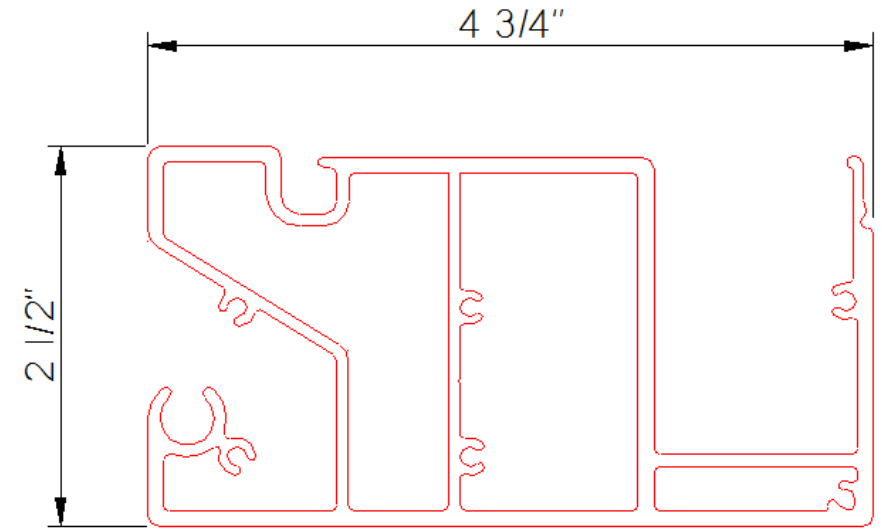
NEW INSTALLATION/MAINTANANCE GUIDE LINES:

- When replacing the belt you will need only one wrap on a pulley when unit is closed (instead of 3 full wraps)
- The tensioning of the springs should be done with unit about 2/3 open – the best indication will be the diameter of belt on pulley should equal the fabric diameter
- If done correctly the spring tensioning will increase from that point up and down

VERTEX BELT UPDATE

FEATURES:

- Sometime this year we will introduce new “Large” hem bar – see drawing on a right to compare with current one
- This will allow to increase the unit width to 16’ on all horizontal applications



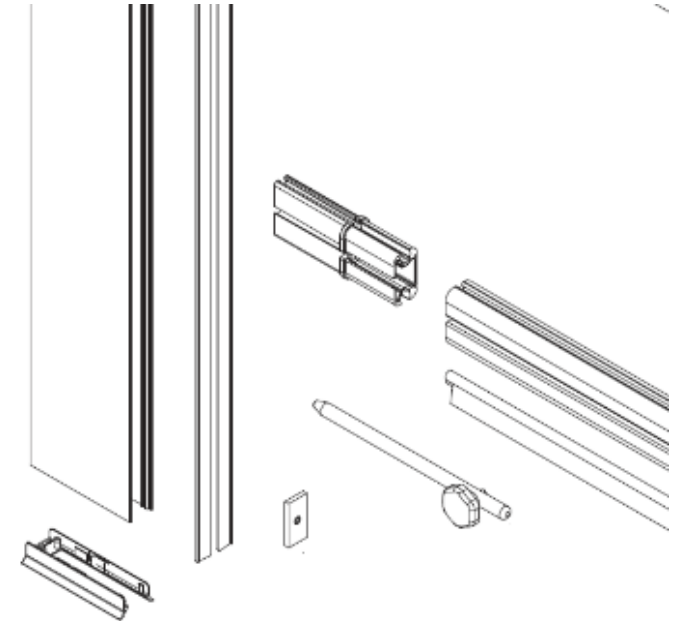
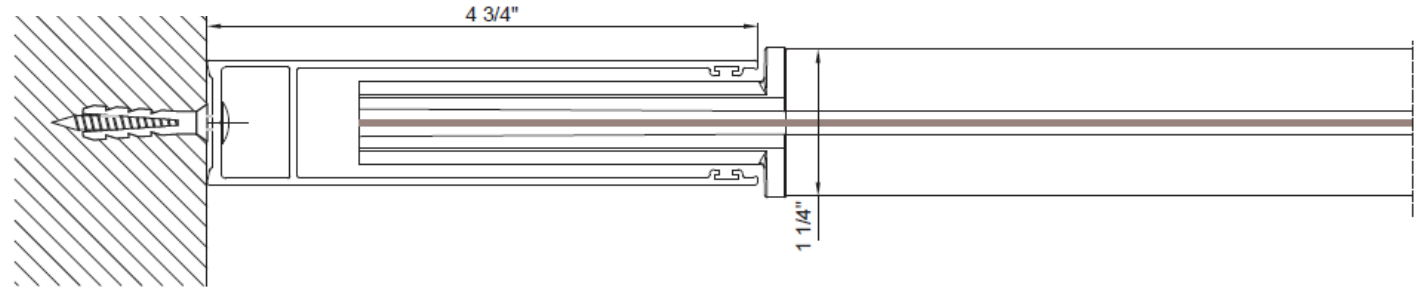
NEW PRATIKA RAIL GUIDE



NEW PRATIKA RAIL GUIDE

FEATURES :

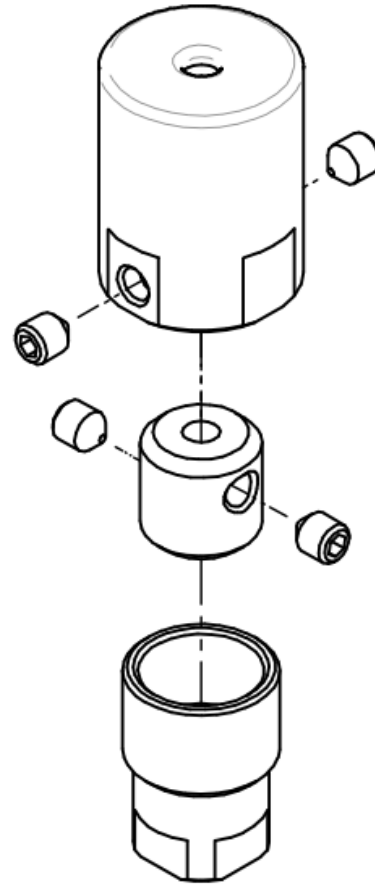
- Allows fabric guidance in places where zip guides will not work – like windy areas
- Will be available on CS5 screens up to 16' wide and 10' drop
- Depending on drop will have one or two windbreaker profiles
- Wind class rating 2 (up to 22 mph winds)
- Locking plate on a hem bar to increase stability
- Guiderail with brush to clean the fabric
- Frame color: white, brown, sand and charcoal



NEW PRATIKA RAIL GUIDE

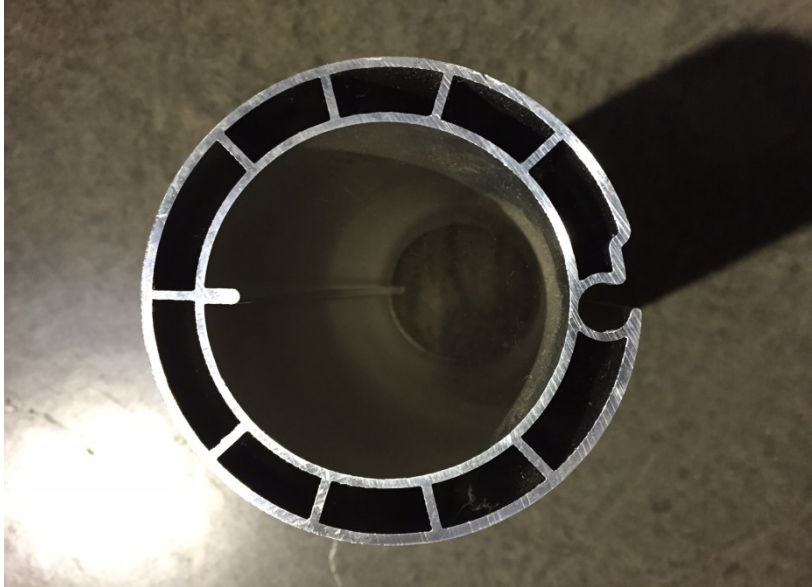


NEW SCREEN CABLE ATTACHMENT



- Small Size
- Made of stainless steel
- Single fastener point
- It allows the hem bar to touch the ground ensuring tight curtain closure and thereby reducing the passage of light.

110mm ROLLERTUBE



In a past we did replace old style 120 mm roller tube with current 110 mm tube.

The main advantages:

- The smaller tube size will decrease the overall weight of the unit
- The new and improved design of the PVC slot will eliminate bump in a fabric and reduce fabric wear
- The flange inside of the tube acts as a lock for 80mm tube insert and guaranty flawless operation of the screen

PRODUCT NEWS WE WILL TALK ABOUT:

AWNING

- BELT ARMS ON ALL AWNINGS
- PRELED ARMS
- DOMINA 32" INSTALL BRACKET
- NO MDV
- LIMITS ON 14'3" PROJECTION ON BELLA PLUS
- NEW A100 PROFILE ON SPACE WALL
- PINNACLE CORD REPLACEMENT

GENNIUS

- ISOLA 2 AND KEDRY PLUS LIGHT OPTION
- NEW INTERMEDIA POST/GABLE PROFILE

SCREEN

- VERTEX BELT UPDATE
- VERTEX LARGE HEM BAR
- PRATIKA RAIL AND WINDBREAKERS
- SCREEN NEW CABLE ATTACHMENT
- 110mm ROLLERTUBE

YOUR OPINION IS IMPORTANT TO US

- SLIM LIGHT FABRIC CROSSBEAM PROFILE
- SLIDING GLASS DOOR
- CS5 ECO

ISOLA 2 AND KEDRY PLUS LIGHT OPTION

What is available:

- We do offer strip LED lights on gutters on both models
- Please be aware that we do offer lights on projection gutters only
- In case of all perimeter lights we will have to run separate cables from the front of the unit and have additional control units



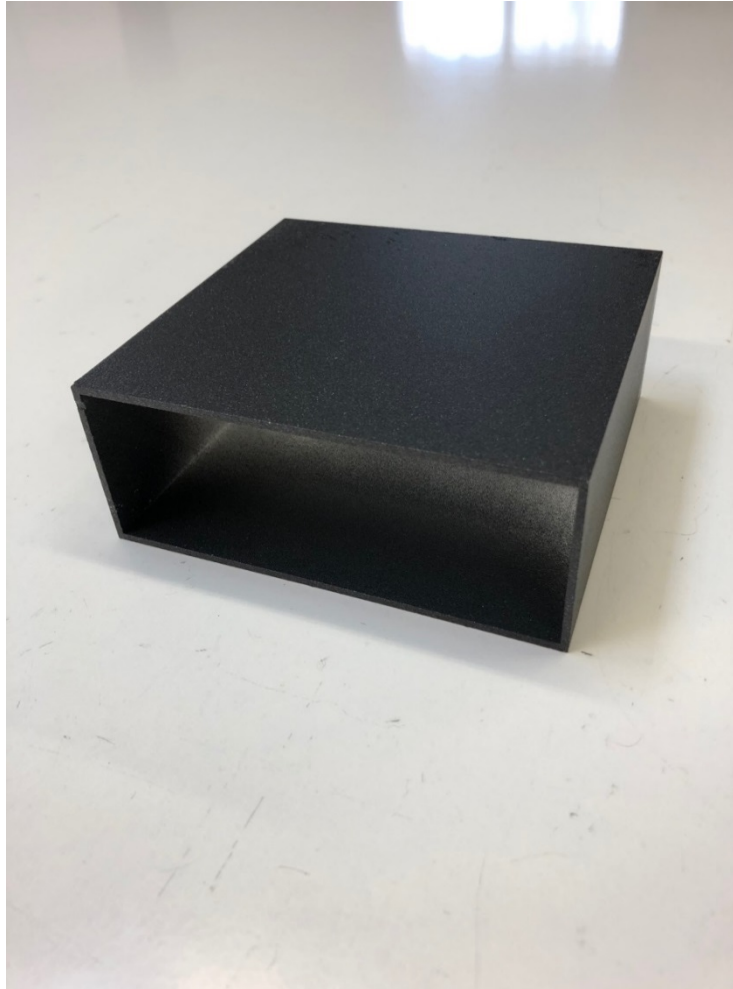
ISOLA 2 AND KEDRY PLUS LIGHT OPTION

What is available:

- Another option will be A100 profile with spot LED lights
- It will span width of the unit between gutters
- You can order one or couple of light bars with additional control units
- We do offer blank profiles to install some fans or heaters (please call us for weight limitation).

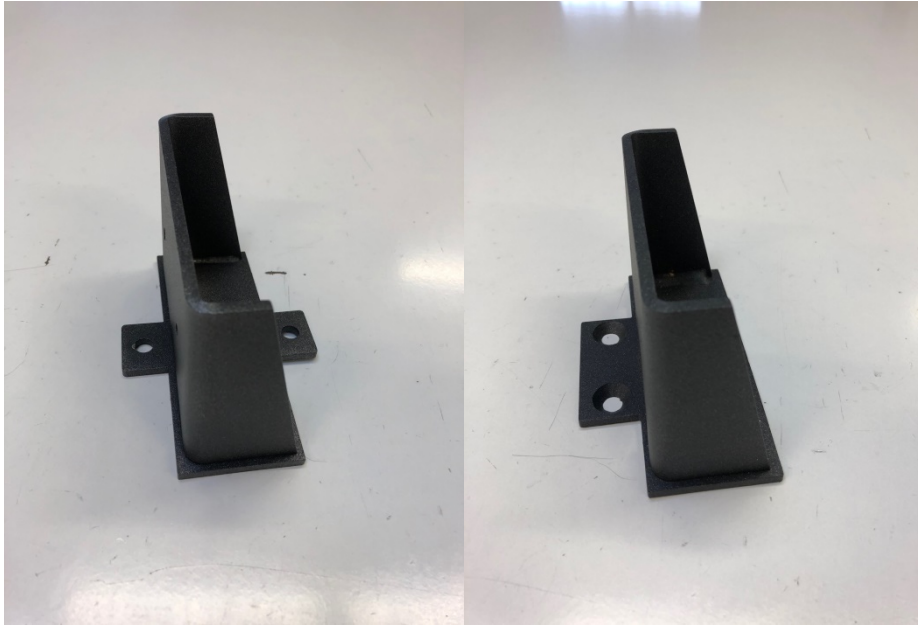


NEW INTERMEDIA POST/GABLE PROFILE



- We do have new rectangular profile 2" x 5.125" that will be used on A2c as a side gable profile
- It could be used as intermediate post on gables (or front gutters) where the opening is too large and smaller size screens are desired
- Max profile size is 19' 8"
- Can be used on A2c, Isola 2 and KEDRY Plus units

NEW INTERMEDIA POST/GABLE PROFILE



- We do have new brackets for this profile
- The bottom/foot will have attachment on both sides
- The top bracket (same as wall bracket) will have only one side attachment

PRODUCT NEWS WE WILL TALK ABOUT:

AWNING

- BELT ARMS ON ALL AWNINGS
- PRELED ARMS
- DOMINA 32" INSTALL BRACKET
- NO MDV
- LIMITS ON 14'3" PROJECTION ON BELLA PLUS
- NEW A100 PROFILE ON SPACE WALL
- PINNACLE CORD REPLACEMENT

GENNIUS

- ISOLA 2 AND KEDRY PLUS LIGHT OPTION
- NEW INTERMEDIA POST/GABLE PROFILE

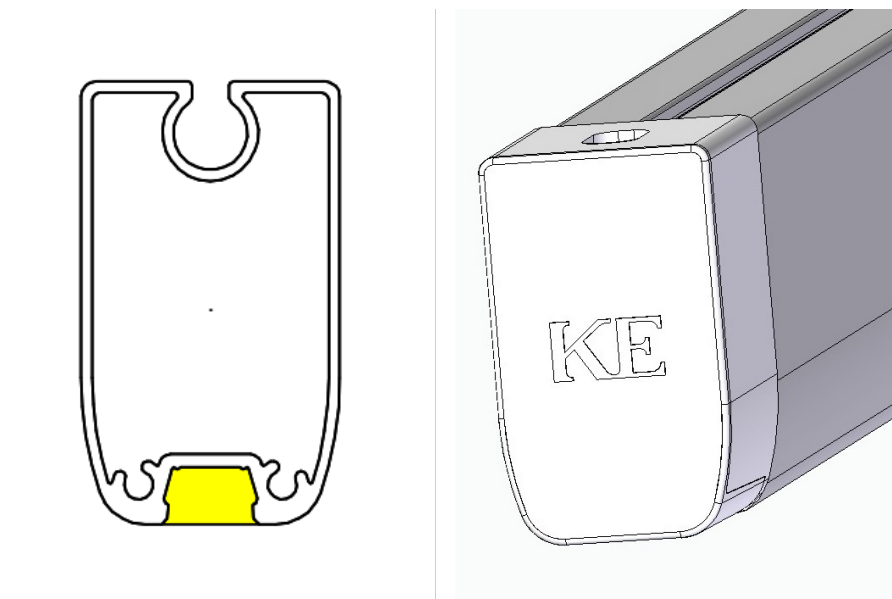
SCREEN

- VERTEX BELT UPDATE
- VERTEX LARGE HEM BAR
- PRATIKA RAIL AND WINDBREAKERS
- SCREEN NEW CABLE ATTACHMENT
- 110mm ROLLERTUBE

YOUR OPINION IS IMPORTANT TO US

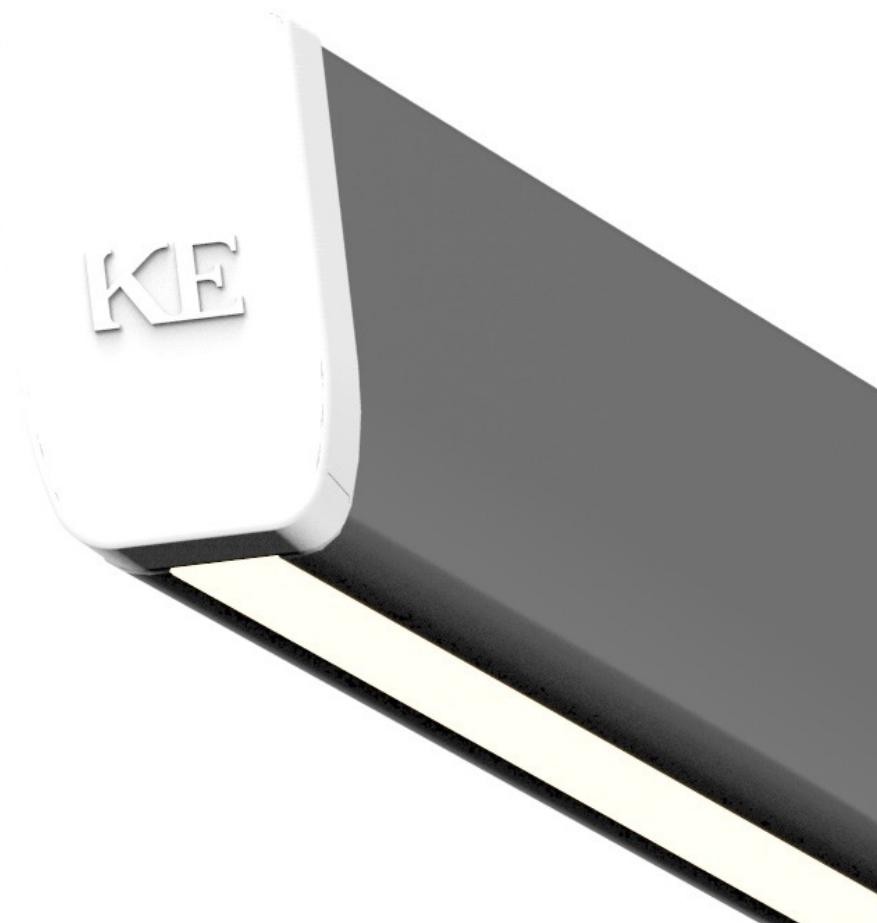
- SLIM LIGHT FABRIC CROSSBEAM PROFILE
- SLIDING GLASS DOOR
- CS5 ECO

SLIM LIGHT FABRIC CROSSBEAM PROFILE



WHAT DO YOU THINK ABOUT
ELIMINATING SWAG FABRIC ON
GENNIUS MODELS?

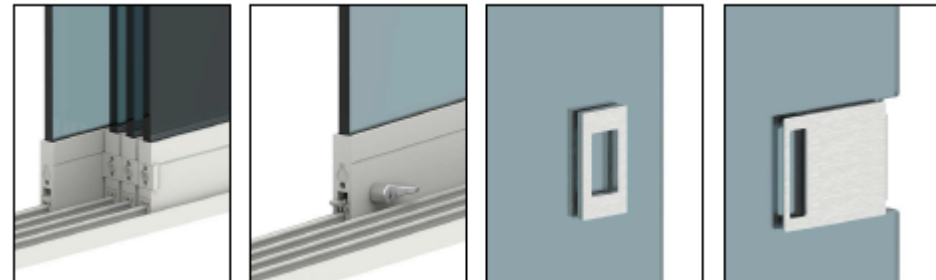
WE CAN INTRODUCE SMALL FABRIC
PROFILES WITH LED STRIP LIGHT



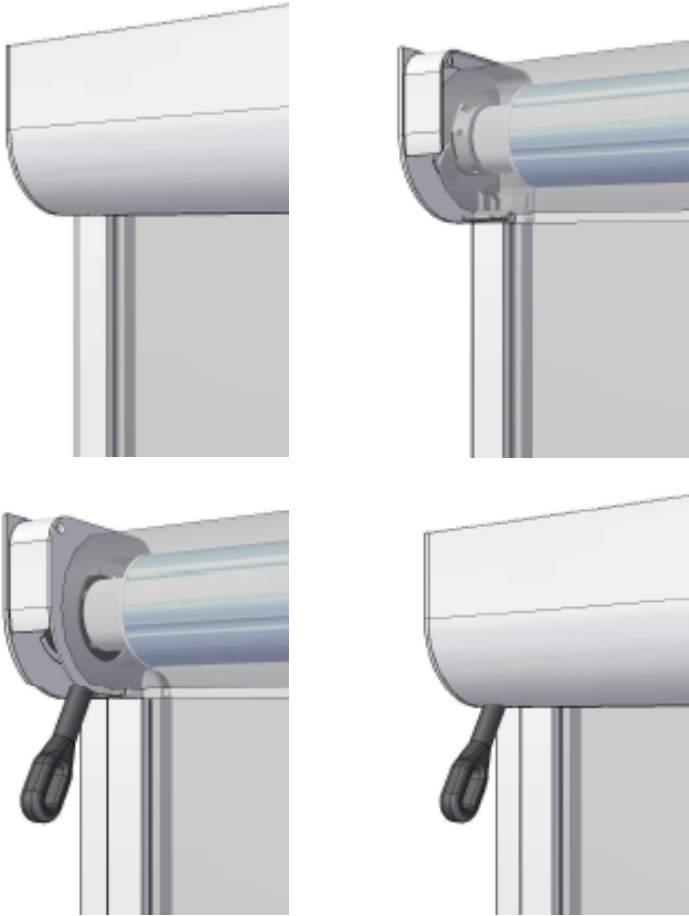
SLIDING GLASS DOOR



- Max dimensions for each glass panel: 3'8" W x 9'10" H
- 3, 4 or 5 sliding doors
- Gasket system on each side glass panel to sealing the system when is closed
- Locking system



CS5 ECO



- Max dimensions: 16'5" W x 9'10" D
- Manual or motorized unit
- 80mm roller tube
- No back profile
- Low Price

THANK YOU FOR YOUR ATTENTION!!!

ANY QUESTIONS?